

# **Installing the CheckPoint VPN Client**

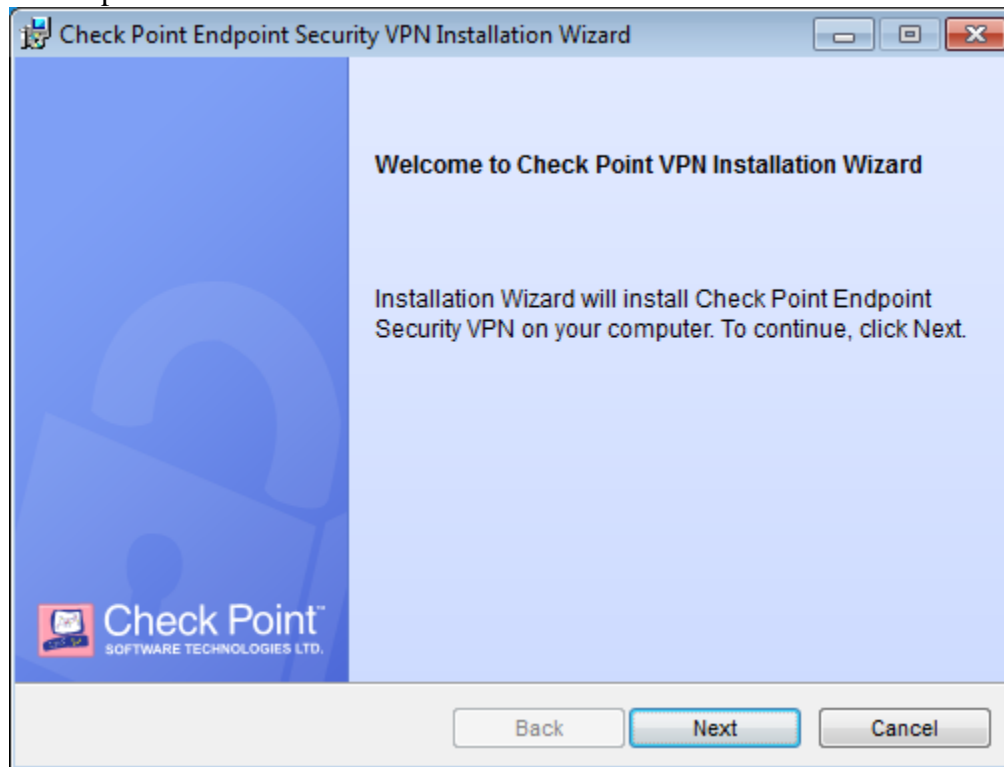
**Installing the VPN Client** ..... Page 2

**Creating a VPN Certificate** .....Page 5

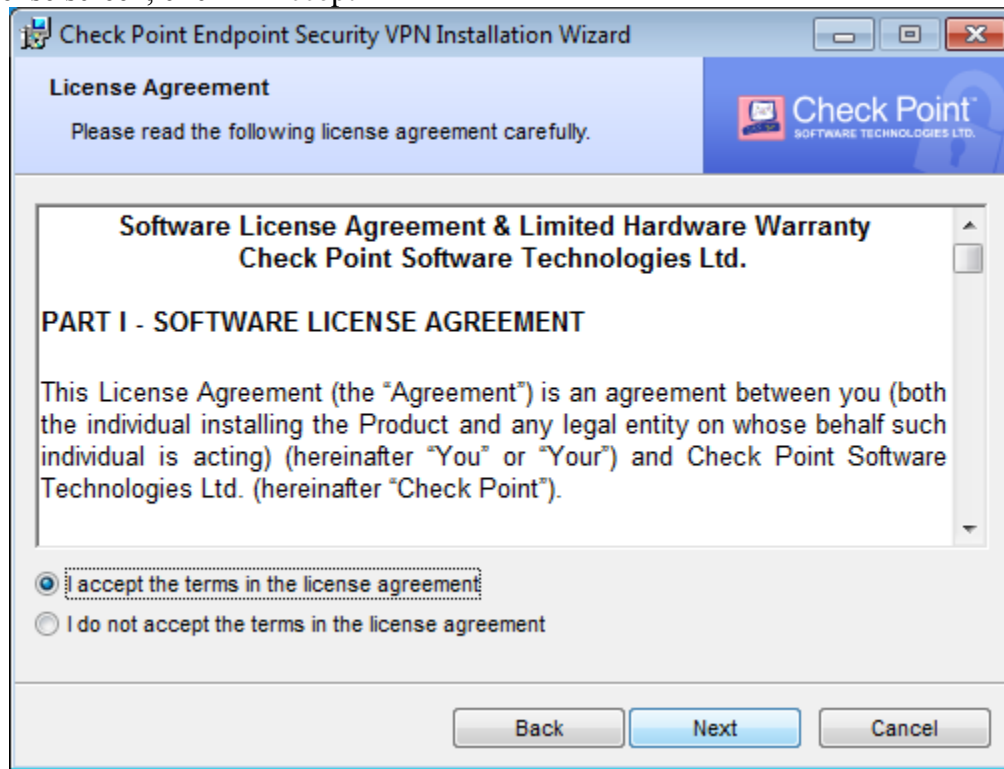
**Logging into VPN** .....Page 9

## Installing the VPN Client

1. Open “VPN Setup.msi”. Click “Next”



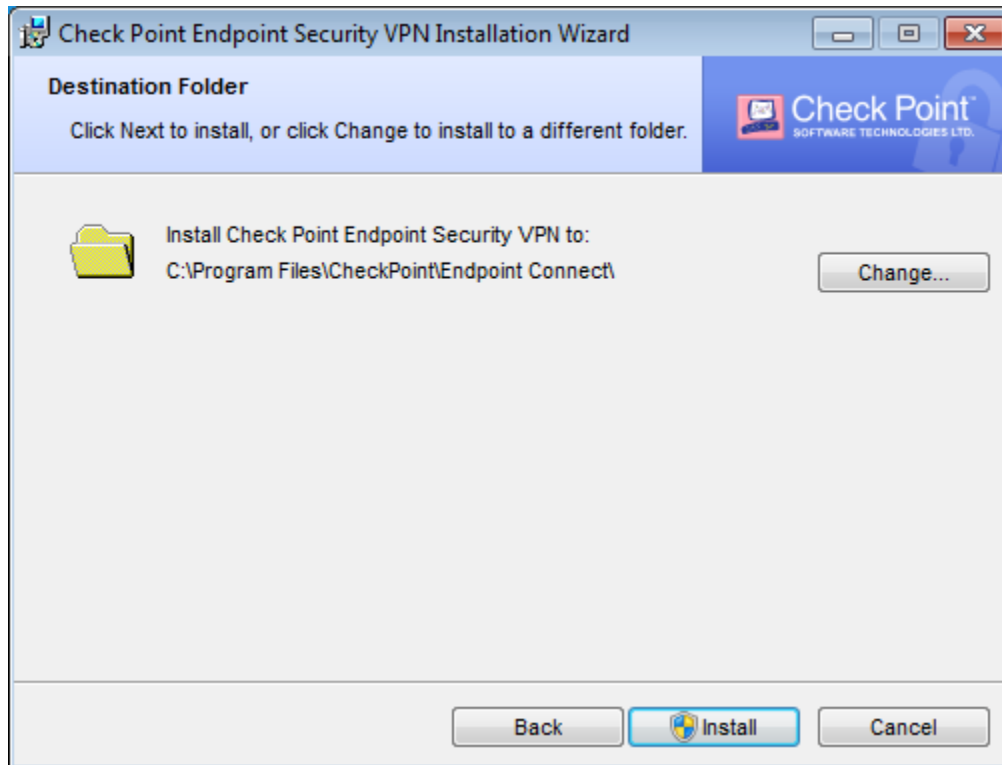
2. At the license screen, click “I Accept”



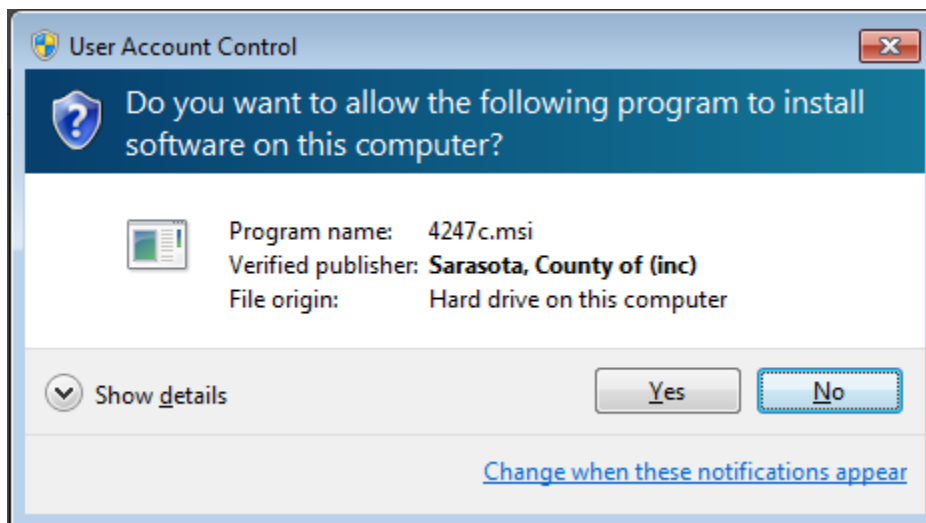
## Installing the VPN Client

---

3. On the next screen, accept the default installation path by clicking “Next”



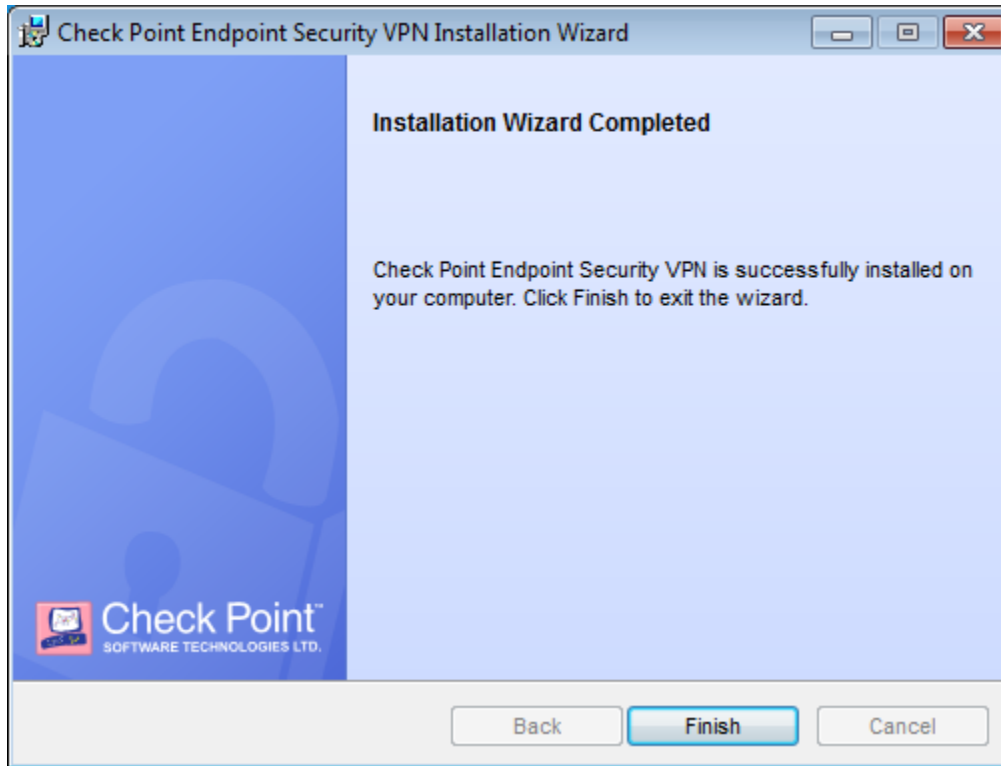
\*\*\*\*During the install, a User Account Control window may appear. Click “Yes” to continue with the installation.



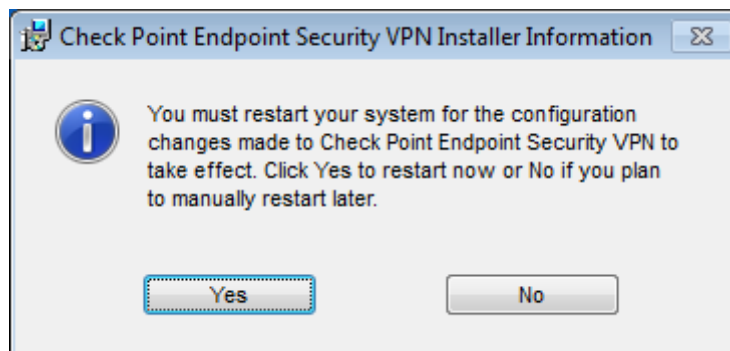
## Installing the VPN Client

---

5. Checkpoint VPN will now install. A screen will appear after this step which may look like the install has stalled. Please be patient, as this is normal.



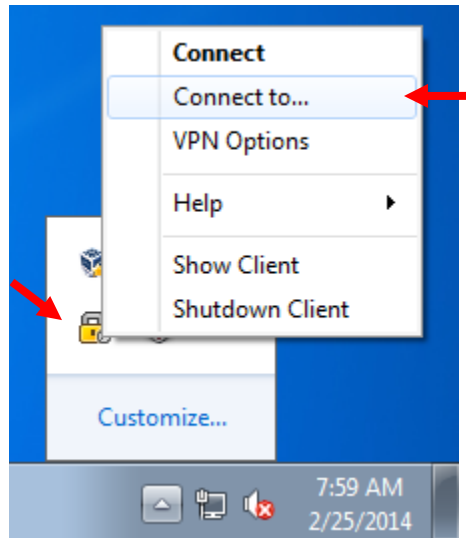
6. Click "Yes" to reboot the PC.



## Creating a VPN Certificate

To create a VPN certificate:

1. Right click the Lock icon in the bottom right corner of the screen and select “Connect to...”.



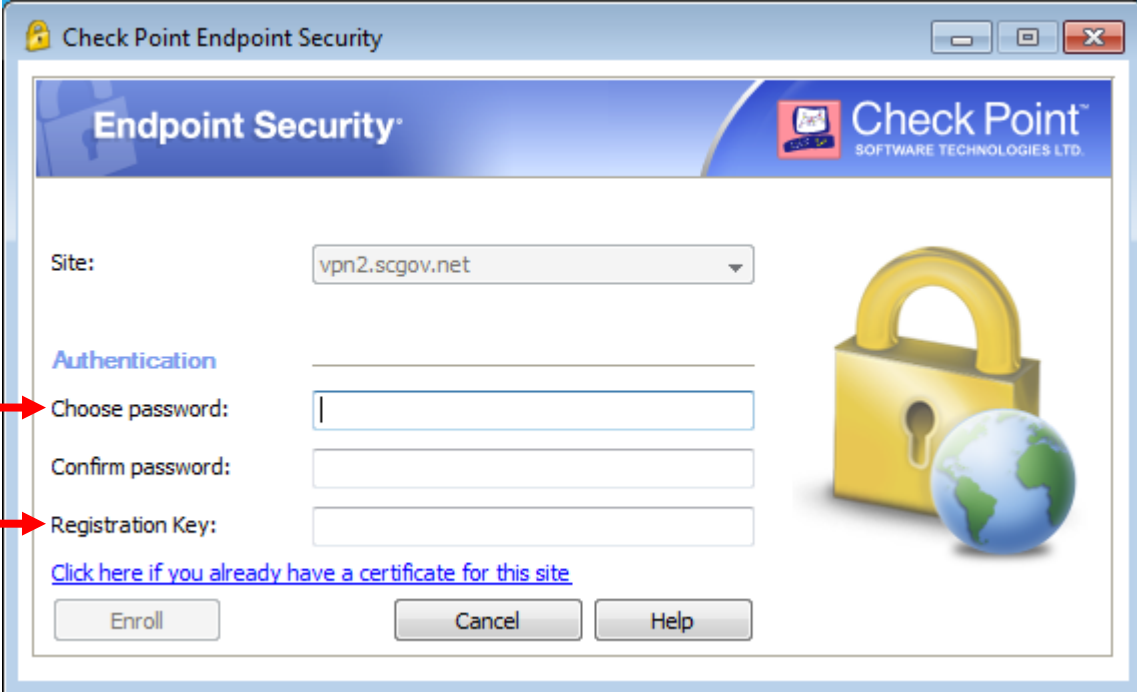
2. Click the “Click here if you don’t have a certificate for this site”.



## Creating a VPN Certificate

3. Enter a password to use for the VPN connection, and confirm it. Then enter the registration key provided by EIT in the “Registration Key” field. Click “Enroll”

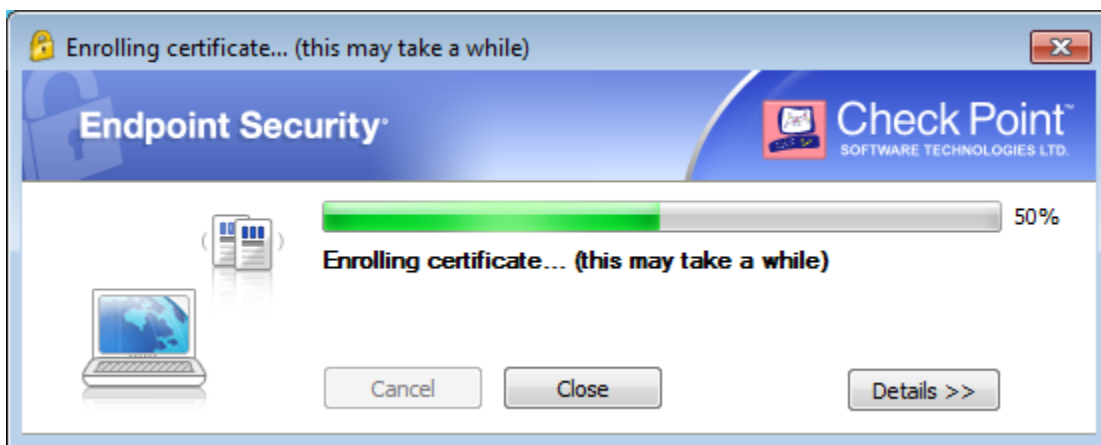
**Note:** *The password must be at least 6 characters long and must have 4 unique characters.*



The screenshot shows the 'Endpoint Security' enrollment window. The title bar reads 'Check Point Endpoint Security'. The main header includes the 'Endpoint Security' logo and the 'Check Point SOFTWARE TECHNOLOGIES LTD.' logo. The form contains the following fields and elements:

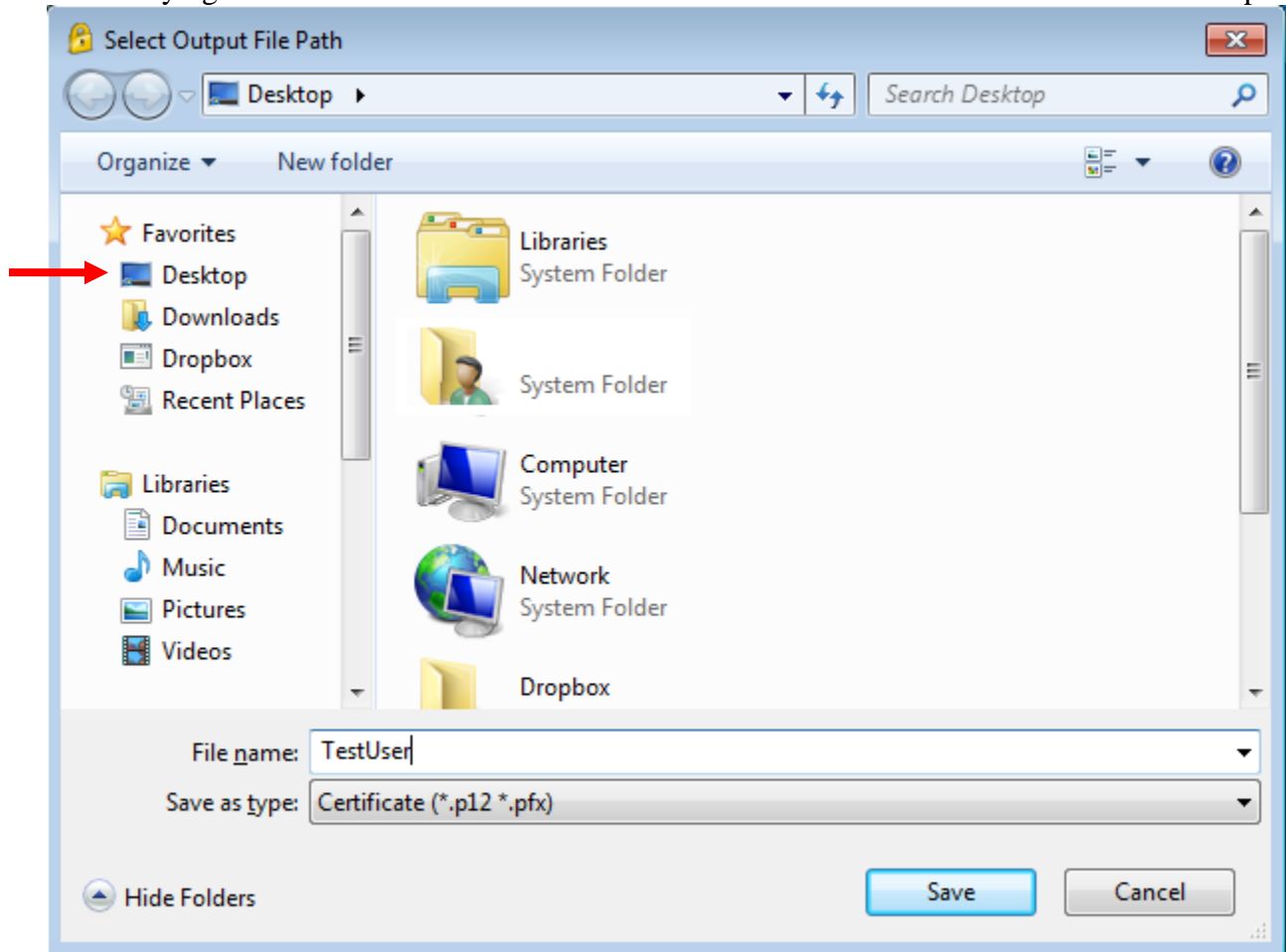
- Site:** A dropdown menu with 'vpn2.scgov.net' selected.
- Authentication:** A section header.
- Choose password:** A text input field with a red arrow pointing to it.
- Confirm password:** A text input field.
- Registration Key:** A text input field with a red arrow pointing to it.
- Buttons:** 'Enroll', 'Cancel', and 'Help' buttons.
- Image:** A yellow padlock and a globe icon.
- Link:** A blue link that says 'Click here if you already have a certificate for this site'.

4. The enrollment process will start.

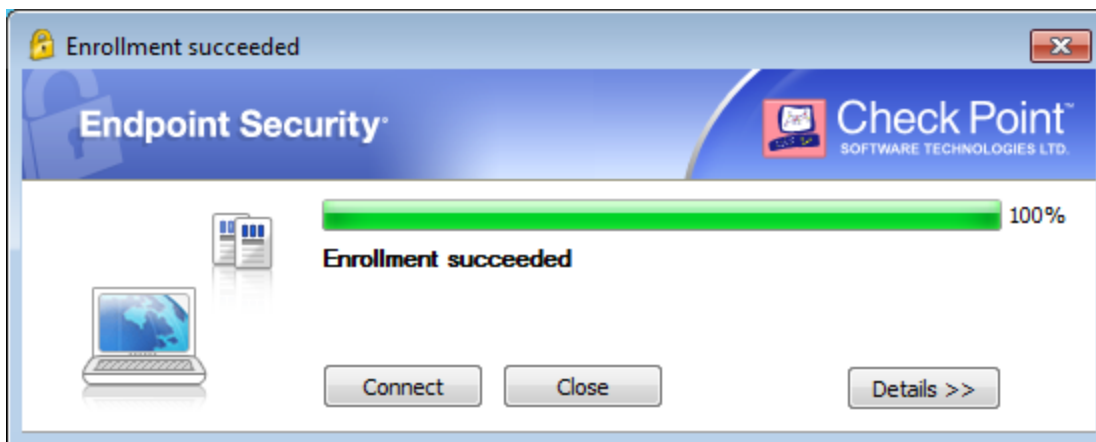


## Creating a VPN Certificate

5. Once the certificate has been created, create a name and a location for the storage of the certificate. Please note that on County owned computers, saving the certificate in the “My Documents” causes problems with trying to use VPN. It is recommended that the VPN certificate be stored on the desktop.

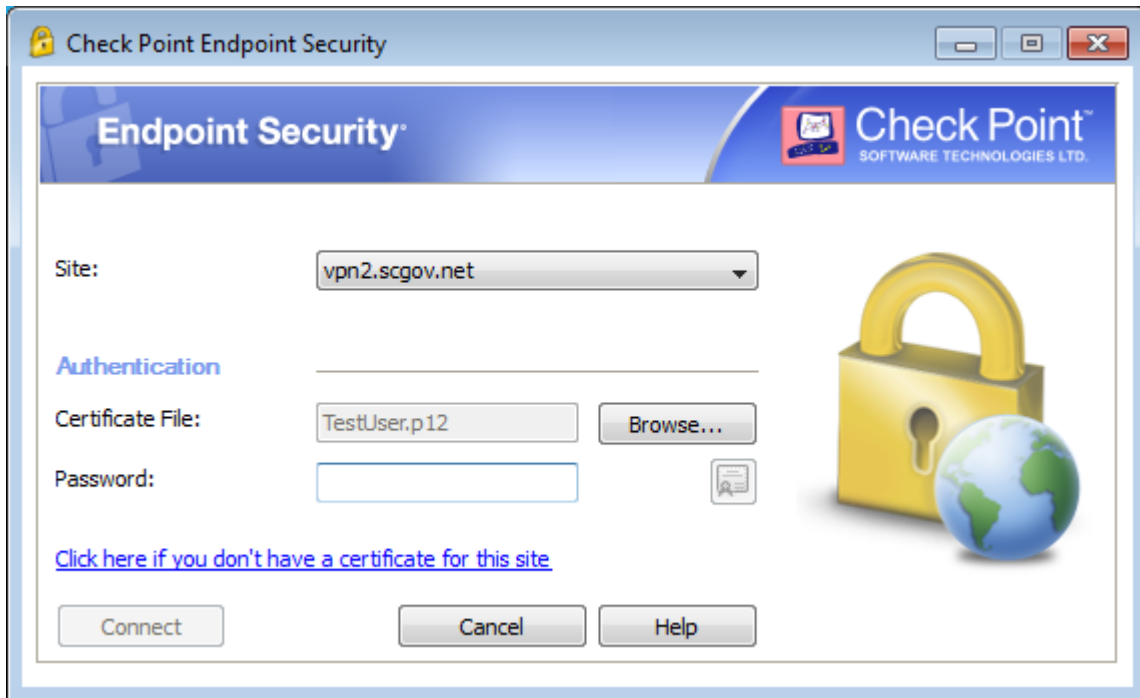


6. After the certificate has been saved, click “Connect”.



## Creating a VPN Certificate

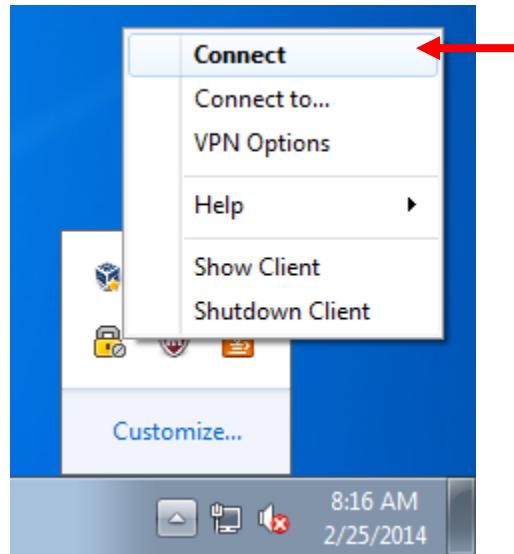
7. Enter the VPN password in the “Password” field and click “Connect”





## Logging into VPN

1. Right click and select “Connect” the lock icon at the bottom right corner of the screen.



2. Enter the VPN password (used when the certificate was created) in the “Password” field and click “Connect”

