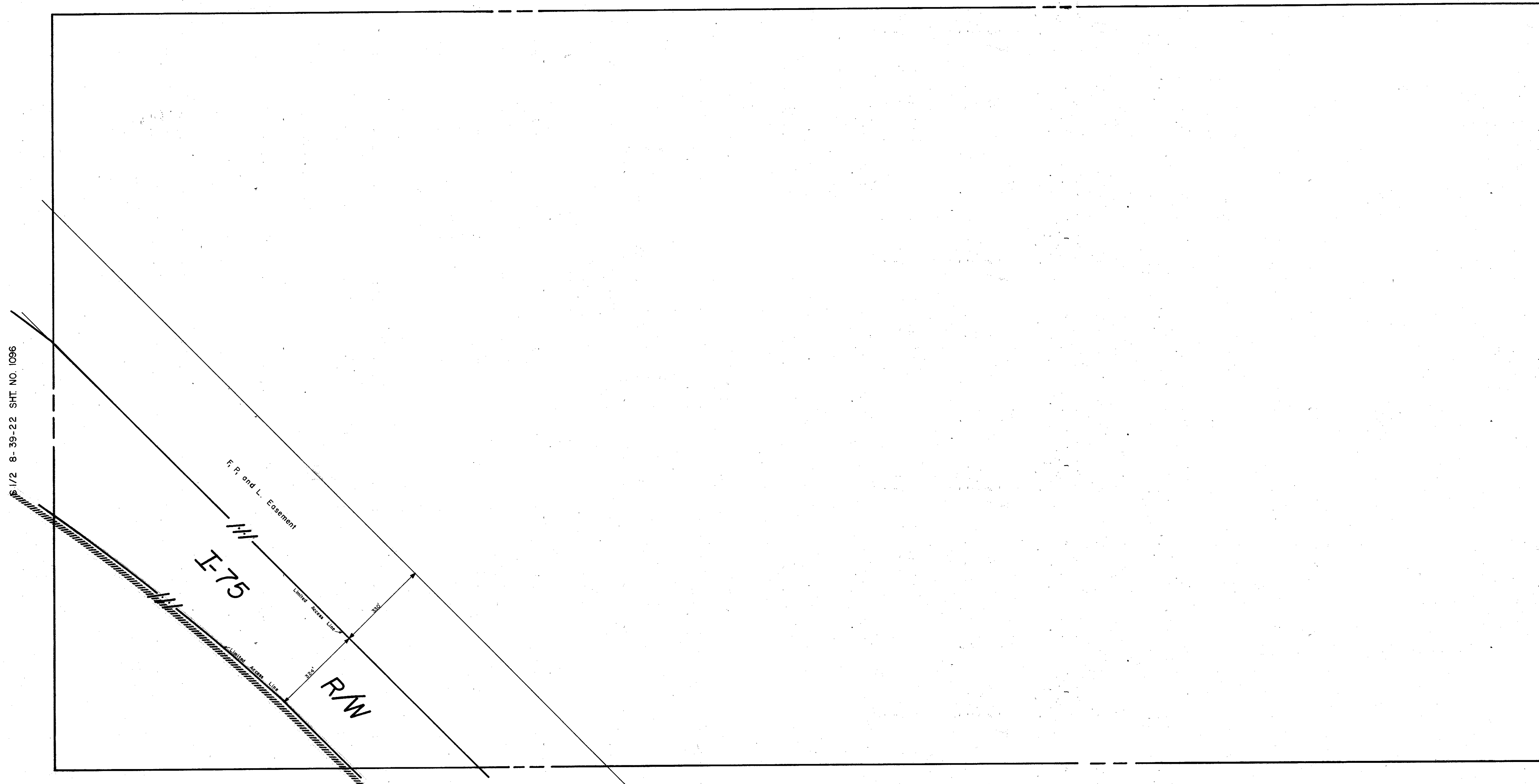
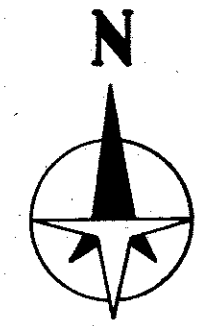


N 1/2 9-39-22 SHT. NO. 1097



N 1/2 16-39-22 SHT. NO. 1111

S 1/2 10-39-22 SHT. NO. 1100



LEGEND:

- ▣ County Section Corner Monument
- County Bench Mark
- Permanent Ref. Mon. for Subs.
- ① Subdivision Index Number

REVISIONS	
DATE	DESCRIPTION
Feb. 1980	Redrawn and added I-75 R/W and F.R. and L. Easement per SRD Maps. SED

SARASOTA COUNTY, FLORIDA

Scale: 1" = 200' Date: February, 1980

Drawn By: Steve Burkholder

S 1/2 SECTION 9
TWP. 39 S. RNG. 22 E.

Sheet No.

1098

BRUNING 44-511 16772