

N 1/2 21-37-18 SHT. NO. 111

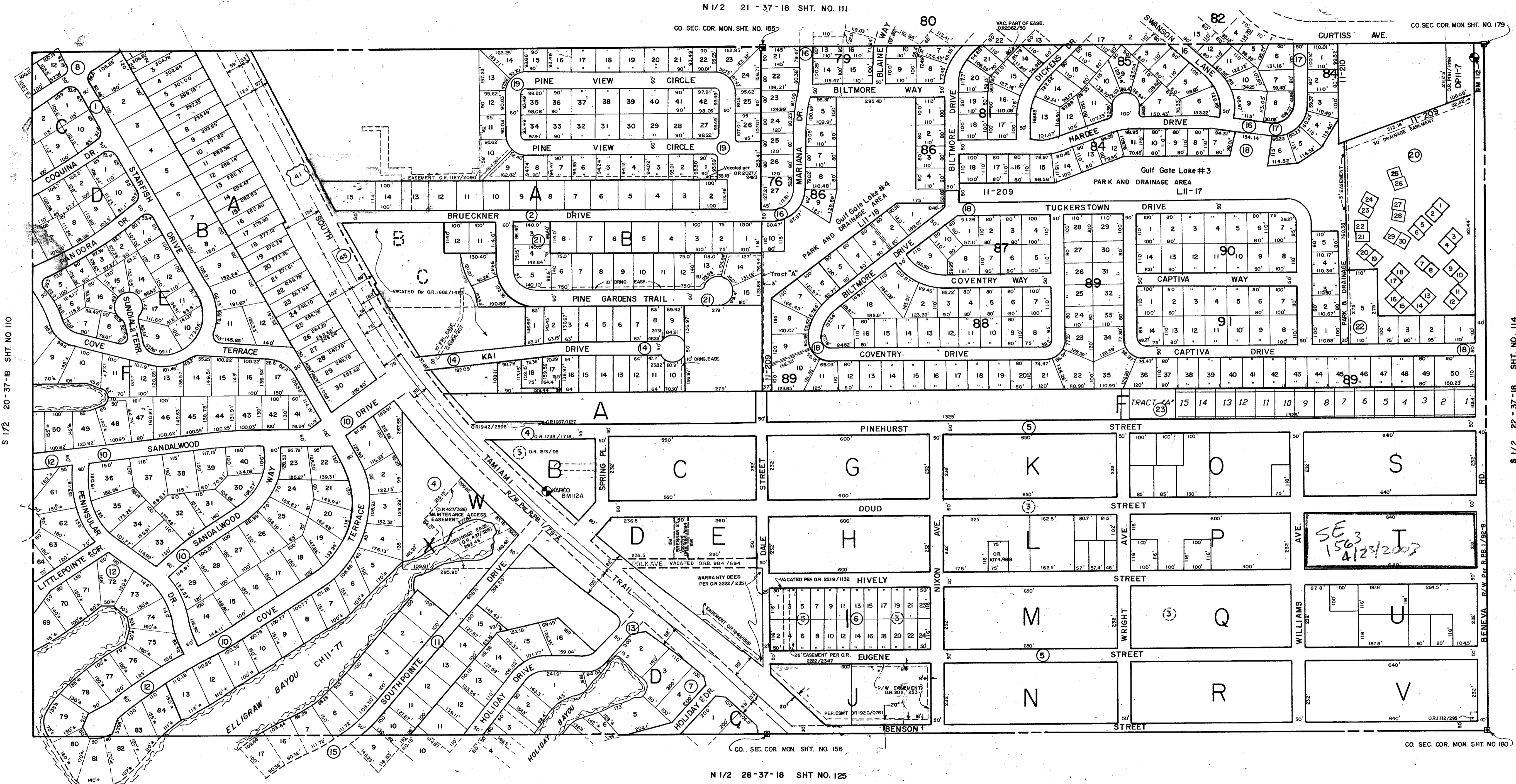
CO. SEC. COR. MON. SHT. NO. 155

CO. SEC. COR. MON. SHT. NO. 179

N 1/2 28-37-18 SHT. NO. 125

CO. SEC. COR. MON. SHT. NO. 156

CO. SEC. COR. MON. SHT. NO. 180



S 1/2 20-37-18 SHT. NO. 110

S 1/2 22-37-18 SHT. NO. 114

SUBDIVISION INDEX

- | | | |
|-----|--|--|
| No. | Name | |
| 1 | CORAL COVE 6/58 A | 20 CAPTIVA GARDENS, CONDOMINIUM, C.B.10/9-9A |
| 2 | BREEZEWOOD ACRES 5/21 | 21 PINE GARDENS SUB. 25/1 |
| 3 | PINEHURST PARK 2/90 (Replatted at 3/41 and 5/83) | 22 REPLAT OF TRACT "A", GULF GATE WOODS UNIT 4 26/44 |
| 4 | PINEHURST PARK REPLAT SHT. NO. 1 3/44 | 23 FLORIDA PINES PB37PG21 |
| 5 | PINEHURST PARK REPLAT SHT. NO. 2 3/44 (Sheet 2 of 2) | |
| 6 | REPLAT OF BLOCK I, REPLAT OF PINEHURST PARK 5/83 | |
| 7 | HOLIDAY HARBOR 7/67 | |
| 8 | CORAL COVE UNIT NO. 3 9/100-100A | |
| 9 | CORAL COVE REPLAT OF A PART OF 10/18 | |
| 10 | SOUTHPOINTE SHORES NO. 1 10/19 | |
| 11 | SOUTHPOINTE SHORES NO. 3 (10/32) REPLAT 11/17 | |
| 12 | SOUTHPOINTE SHORES NO. 2 10/58 & 11/15 | |
| 13 | HOLIDAY HARBOR UNIT NO. 2 10/96 | |
| 14 | JENSEN SUBDIVISION 11/21 | |
| 15 | SOUTHPOINTE SHORES UNIT NO. 4 16/38 | |
| 16 | GULF GATE WOODS UNIT NO. 2 20/9-9A | |
| 17 | GULF GATE WOODS UNIT NO. 3 21/5-5B | |
| 18 | GULF GATE WOODS UNIT NO. 4 21/35-35 B | |
| 19 | GULF GATE PINE 24/25-25A | |

LEGEND:

- ☐ County Section Corner Monument
- County Bench Mark
- Permanent Ref. Mon. for Subs.
- ① Subdivision Index Number

| REVISIONS | |
|-----------|-------------|
| DATE | DESCRIPTION |
| | |
| | |

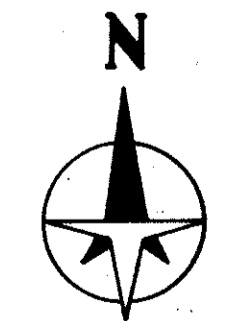
SARASOTA COUNTY, FLORIDA

Scale: 1" = 200' Date: AUG. 1991

Drawn By: KAM

**S 1/2 SECTION 21
TWP. 37 S. RNG. 18 E.**

Sheet No.
112



FEB 1996 QUIT CLAIM DEED OR 2807/1956
OCT 1991 CORRECTED DALE ST. R/W
MAY 1991 REDRAWN