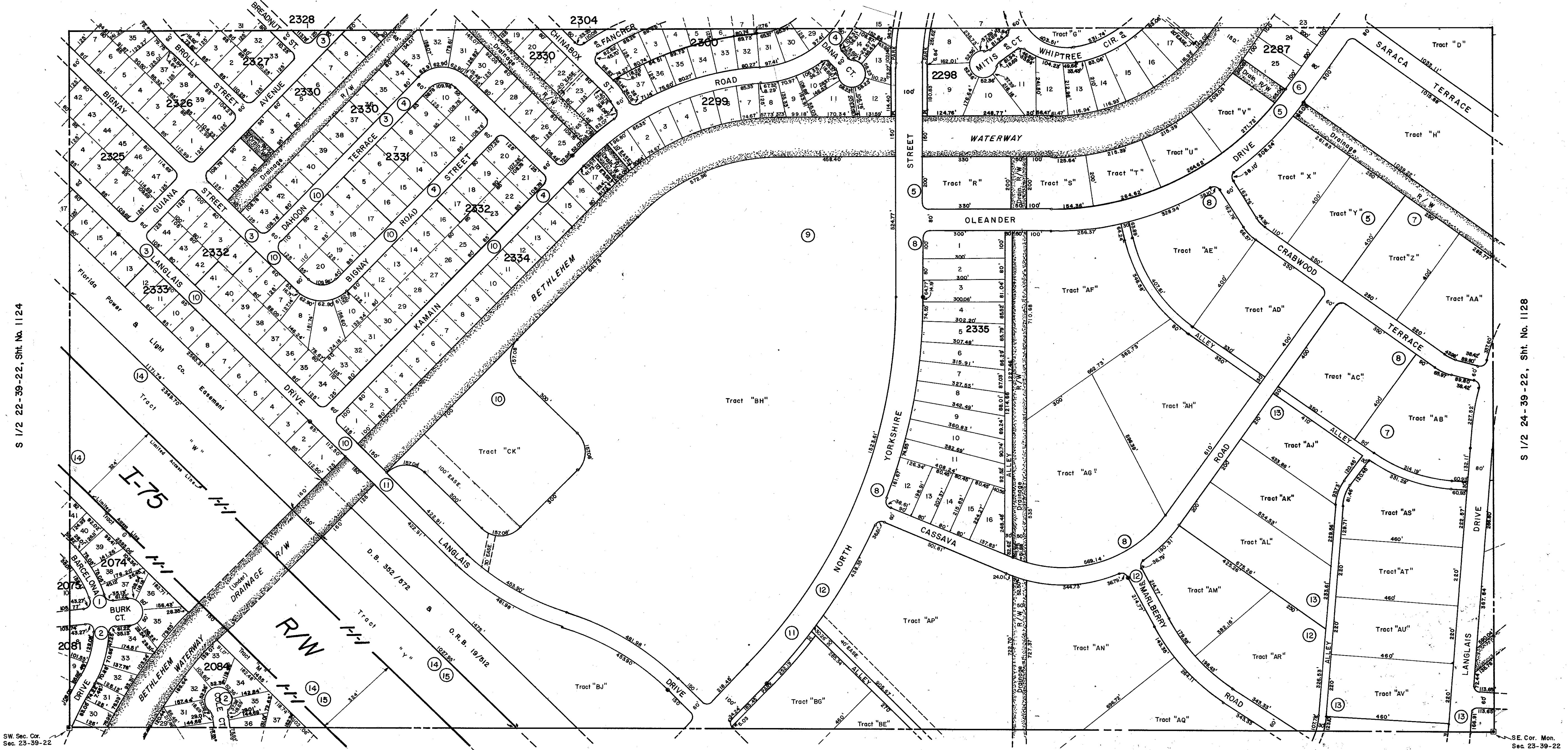


N 1/2 23-39-22, Sht. No. 1125



S 1/2 22-39-22, Sht. No. 1124

S 1/2 24-39-22, Sht. No. 1128

N 1/2 26-39-22, Sht. No. 1131

SUBDIVISION INDEX

1.	Port Charlotte, 45th. Add.	19/39 B
2.	"	19/39 E
3.	"	19/46 O
4.	"	19/46 P
5.	"	19/46 Q
6.	"	19/46 R
7.	"	19/46 V
8.	"	19/46 W
9.	"	19/46 X
10.	"	19/46 Y
11.	"	19/46 Z
12.	"	19/46 AA
13.	"	19/46 BB
14.	"	21/1 N N
15.	"	21/100

- LEGEND:**
- County Section Corner Monument
 - Permanent Reference Monument
 - Reference Point for Subdivisions
 - ① Subdivision Index Number
 - Drainage

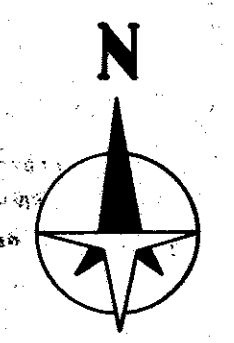
REVISIONS	
DATE	DESCRIPTION
Feb. 1974	Added Port Charlotte, 47th. Add.
Oct. 1974	" " " 49th. Add.
Feb. 1980	Added I-75 per SRD Maps
Dec. 1990	CHANGED STREET NAMES PER OR 2045/2065

SARASOTA COUNTY, FLORIDA
 Scale: 1" = 200' Date: Jan. 1973
 Drawn By: J.L.D.

**S. 1/2 Section 23
 Twp. 39 S. - Rge. 22 E.**

Sheet No. **1126**

NOTE: This map was prepared in accordance with the provisions of Chapter 119, Florida Statutes, and all other applicable laws and regulations. It is hereby certified that the same is a true and correct copy of the original as filed in the office of the County Clerk, Sarasota County, Florida, on this 14th day of January, 1973.



BRUNING 44-511-1672