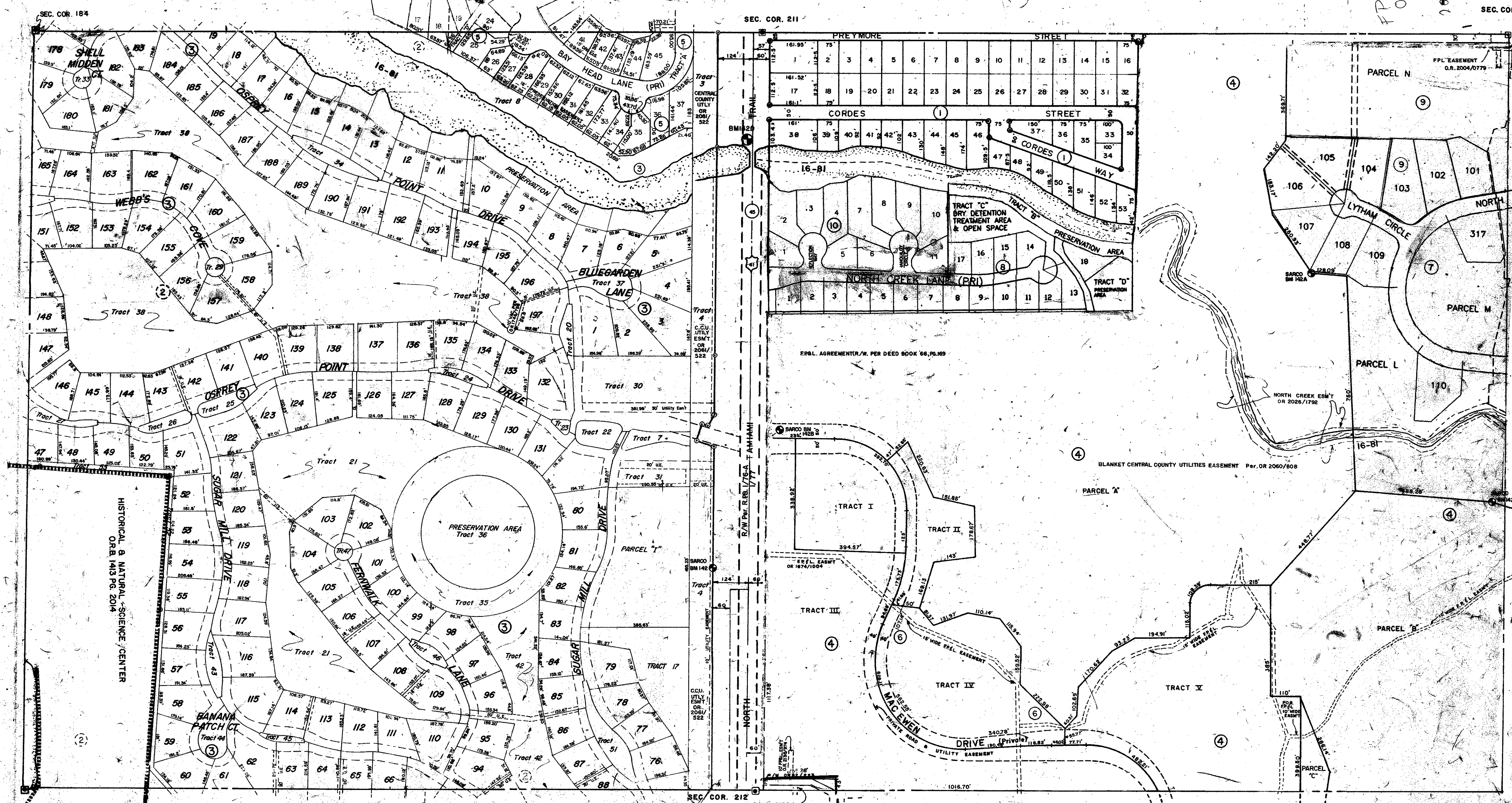


S 1/2 34 - 37 - 18 SHT. NO. 133

FPL EASEMENT
O.R. 2004/0779

SEC. COR. 242

N 1/2 4 - 38 - 18 SHT. NO. 144



S 1/2 3 - 38 - 18 SHT. NO. 143

SUBDIVISION INDEX

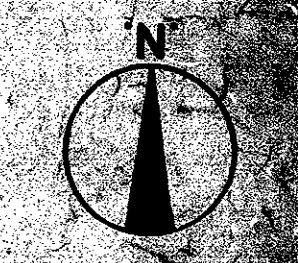
- | No. | Name | Reference |
|-----|---|-----------|
| 1. | CORDES COVE | 7/29 |
| 2. | THE OAKS | 1/8 |
| 3. | OAKS | 28/48 |
| 4. | OAKS II | 30/4 |
| 5. | BISHOPSCOURT AT THE OAKS PRESERVE PB 33/28 | |
| 6. | WINDSOR LODGE AT THE OAKS, A CONDO C.B. 28/45 | |
| 7. | OAKS 2 - PHASE 4 - C PB 38/48 | |
| 8. | OAK CREEK - PH 36/30 | |
| 9. | OAK 2 PHASE IV - C PART 2 PB 39/50 | |
| 10. | NORTH CREEK EST. | |

- LEGEND
 PERM. REF. MON. (for Subs)
 CONC. MON.
 IRON PIPE

DATE	ALTERATIONS DESCRIPTION
AUG. 1990	ADDED R/W PER O.R. 2189/306
SEP. 1990	ADDED WINDSOR LODGE AT THE OAKS, A CONDO C.B. 28/45
OCT. 1990	ADDED BISHOPSCOURT AT THE OAKS PRESERVE PB 33/28
SEP. 1995	ADDED OAKS UTILITY EASEMENT PER O.R. 2156/207A
OCT. 1996	CENTRAL COUNTY UTILITY EASEMENT OR 2004/0779
OCT. 1998	ADDED TRACTS I, II, III, IV, V, VI, VII, VIII, IX, X, XI, XII, XIII, XIV, XV, XVI, XVII, XVIII, XIX, XX, XXI, XXII, XXIII, XXIV, XXV, XXVI, XXVII, XXVIII, XXIX, XXX, XXXI, XXXII, XXXIII, XXXIV, XXXV, XXXVI, XXXVII, XXXVIII, XXXIX, XL, XLI, XLII, XLIII, XLIV, XLV, XLVI, XLVII, XLVIII, XLIX, L, LI, LII, LIII, LIV, LV, LVI, LVII, LVIII, LVIX, LX, LXI, LXII, LXIII, LXIV, LXV, LXVI, LXVII, LXVIII, LXIX, LXX, LXXI, LXXII, LXXIII, LXXIV, LXXV, LXXVI, LXXVII, LXXVIII, LXXIX, LXXX, LXXXI, LXXXII, LXXXIII, LXXXIV, LXXXV, LXXXVI, LXXXVII, LXXXVIII, LXXXIX, XLXXX, XLXXXI, XLXXXII, XLXXXIII, XLXXXIV, XLXXXV, XLXXXVI, XLXXXVII, XLXXXVIII, XLXXXIX, XLXXXX, XLXXXXI, XLXXXXII, XLXXXXIII, XLXXXXIV, XLXXXXV, XLXXXXVI, XLXXXXVII, XLXXXXVIII, XLXXXXIX, XLXXXXX, XLXXXXXI, XLXXXXXII, XLXXXXXIII, XLXXXXXIV, XLXXXXXV, XLXXXXXVI, XLXXXXXVII, XLXXXXXVIII, XLXXXXXIX, XLXXXXXX, XLXXXXXXI, XLXXXXXXII, XLXXXXXXIII, XLXXXXXXIV, XLXXXXXXV, XLXXXXXXVI, XLXXXXXXVII, XLXXXXXXVIII, XLXXXXXXIX, XLXXXXXXX, XLXXXXXXXI, XLXXXXXXXII, XLXXXXXXXIII, XLXXXXXXXIV, XLXXXXXXXV, XLXXXXXXXVI, XLXXXXXXXVII, XLXXXXXXXVIII, XLXXXXXXXIX, XLXXXXXXX

SARASOTA COUNTY FLORIDA.
 SCALE 1"=200' JULY 1964

N 1/2 SECTION 3
 TWP. 38 S. RNG. 18 E.



SHT. NO. 142