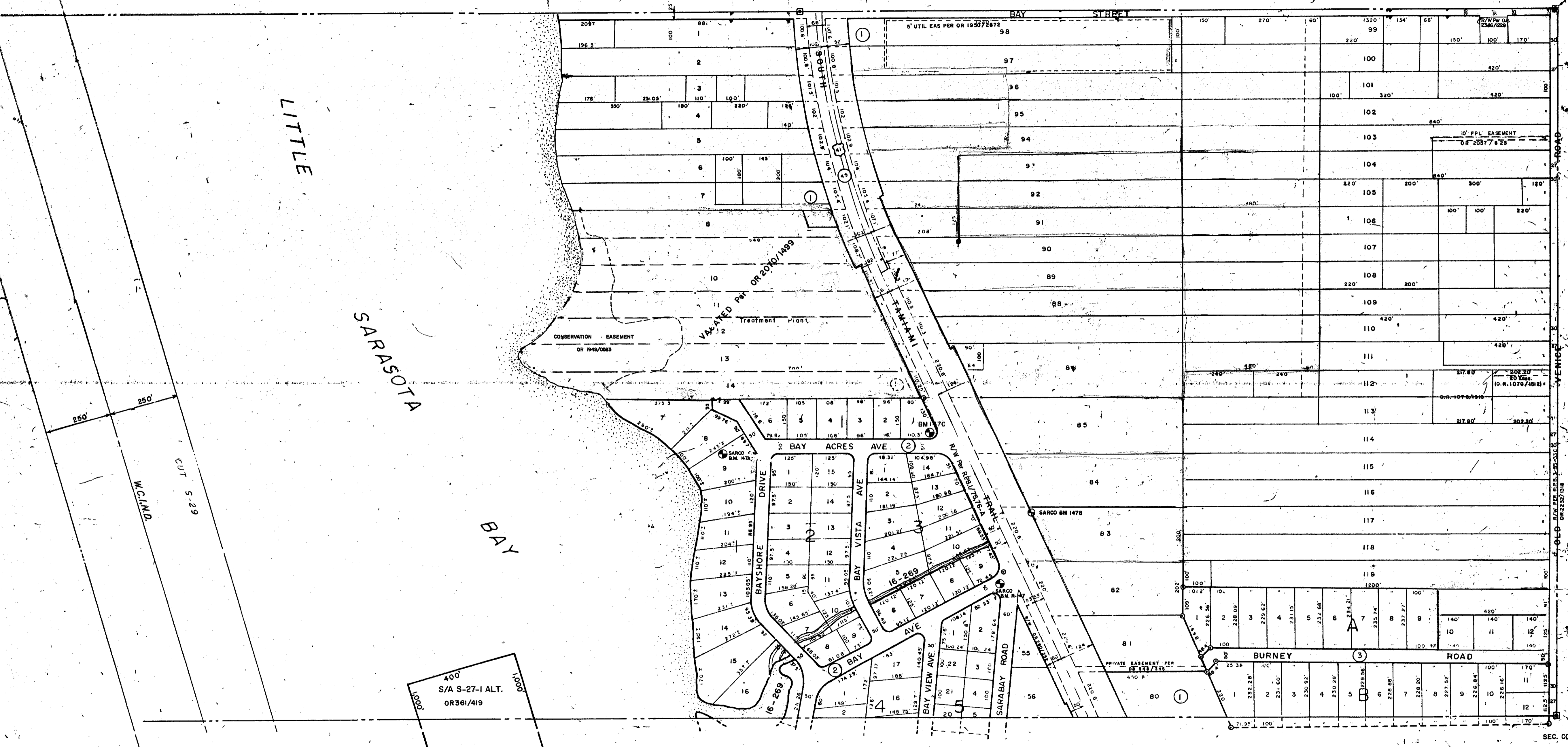


S 1/2 3-38-18 SHT. NO. 143

SEC. COR. 213

CO. SEC. COR. MON. SHT. NO. 244



S 1/2 10-38-18 SHT. NO. 149

SEC. COR. 245

SUBDIVISION INDEX

No.	Name	Sub.
1	SARABAY ACRES	4/62
2	BAY ACRES SUB.	5/99 (REPLATED)
2	BAY ACRES RE-SUB.	7/16 & 16A
3	BEL-AIR SUB.	6/42

LEGEND

- Section Corner Monument (NEW NUMBER)
- Permanent Reference Monument
- Reference Point for Subdivisions
- Ⓛ Subdivision Index Number
- Drainage

ALTERATIONS

DATE	DESCRIPTION
JULY 1964	REDRAWN
MAY 1966	RECALCULATED, ADDED SPLITTS & REVISIONS
NOV 1967	REVISED SHORE-LINE
FEB 1968	WHITE & REVISIONS
MAY 1974	Added S-15 of Sarabay Acres - D. R. 2033/216
MAY 1974	Added S-15 of Sarabay Acres - D. R. 2044/258
MAY 1974	Added site of Treatment Plant (See Exception Petition No. 434)
MAY 1974	Added & Easement - D. R. 1970/793 & 1975
OCT 1978	Revised, BAY ST. & OLD SERVICE RD. INTERSECTION

SARASOTA COUNTY, FLORIDA
SCALE 1" = 200'
JULY 1964

N 1/2 SECTION 10
TWP. 38 S. RNG. 18 E

SHT. NO.
149

