

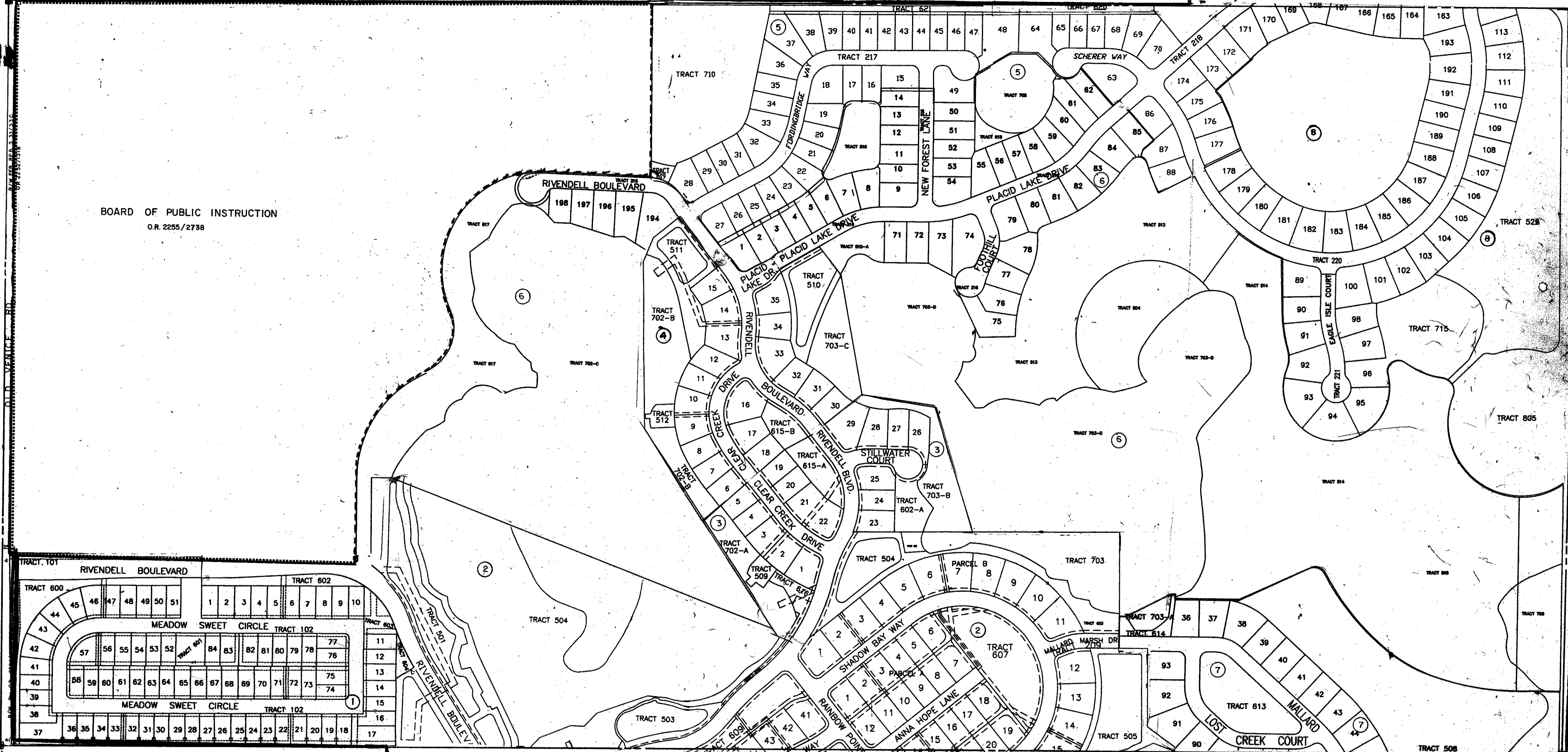
CO. SEC. MON. SHT. NO. 245
FPL ESMT Per O.R. 2293/1498

CO. SEC. MON. SHT. NO. 314

S 1/2 10-38-18 SHT. NO. 148

S 1/2 12

BOARD OF PUBLIC INSTRUCTION
O.R. 2255/2738



CO. SEC. COR. MON. SHT. NO. 246

CO. SEC. COR. MON. SHT. NO. 314

- 1 RIVENDELL UNIT 1 PB38 PG.3
- 2 RIVENDELL UNIT 2 PB39/11
- 3 RIVENDELL UNIT 3C PB40/40
- 4 RIVENDELL UNIT 3-E PB41PG46
- 5 RIVENDELL UNIT 4-B THE WOODLAND PB42PG28
- 6 RIVENDELL UNIT 4-A PB42PG17
- 7 RIVENDELL UNIT 3-D PB42PG4
- 8 RIVENDALE UNIT 5 THE WOODLANDS PB42PG35

- LEGEND**
- PERM. REF. MON. (for Subs.)
 - CONC. MON.
 - IRON PIPE
 - CO. SEC. COR. MON. (NEW NUMBERS)
 - CO. BENCH MARK

ALTERATIONS	
DATE	DESCRIPTION
AUG 1964	RE-DRAWN SECTION CORNERS - DNR'S
OCT 1988	ADDED S.W. CORNER 2292/1318
FEB 1992	ADDED FPL ESMT Per O.R. 2293/1498 & 2294/2169
FEB 1992	ADDED CNTY. SCHOOL BRD. PROB Per O.R. 2255/2738

SARASOTA COUNTY FLORIDA
SCALE: 1" = 200'
AUG. 1964

S 1/2 SECTION 11
TWP. 38 S. RNG. 18 E.

SHT. NO.
150