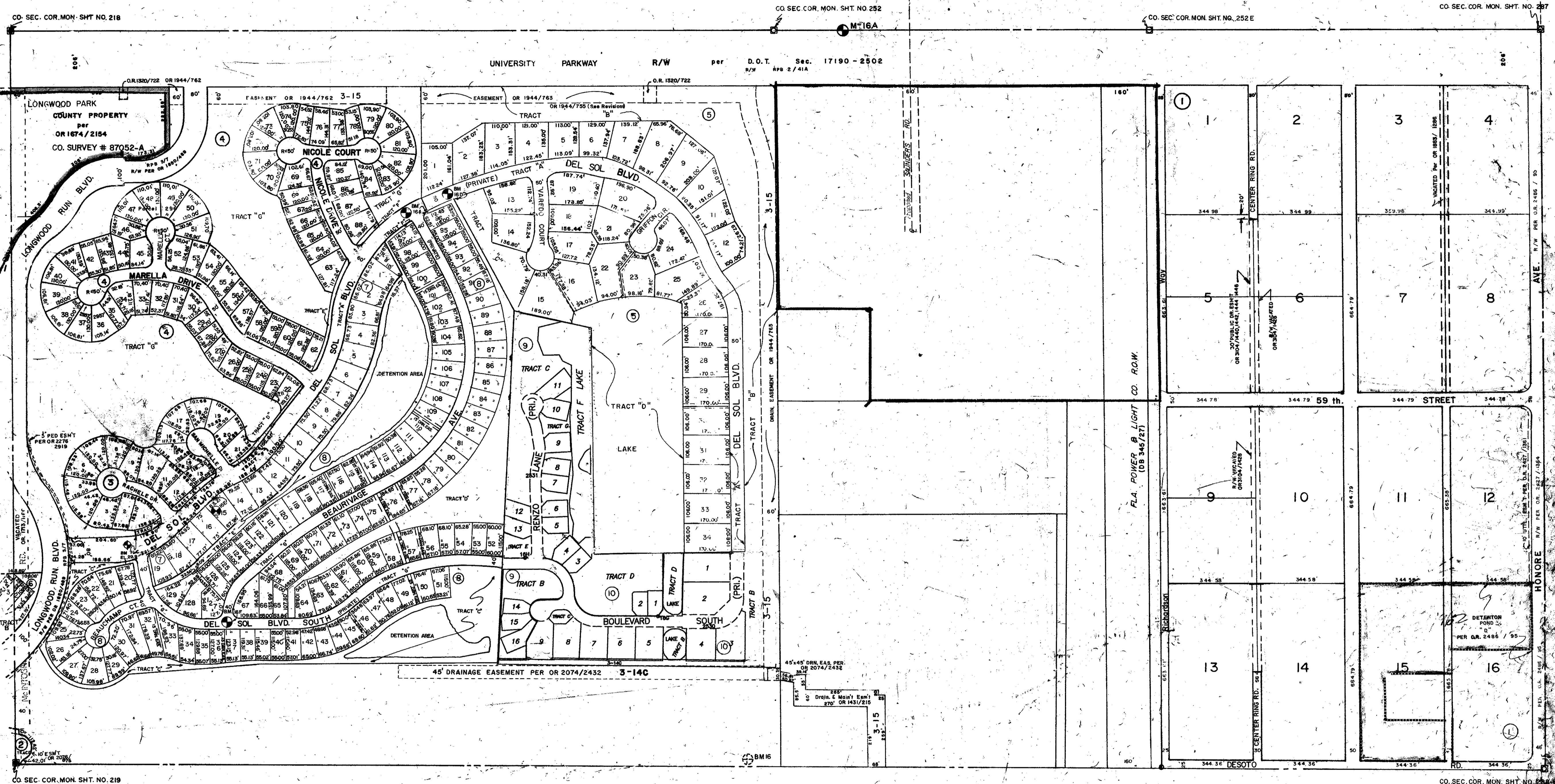


MANATEE COUNTY



N 1/2 3-36-18 SHT. NO. 18

S 1/2 2-36-18 SHT. NO. 17

SUBDIVISION INDEX

No.	Name
1.	SARASOTA GARDENS 2/107
2.	LONGWOOD RUN SUBDIVISION, UNIT I PB 30/8,8A
3.	LONGWOOD RUN PHASE III PART "A" A SUBDIVISION PB 31/44B
4.	LONGWOOD RUN PHASE III PART "B" PB. 31/47
5.	LONGWOOD RUN PHASE IV P.B. 32/37
6.	RIVIERA CLUB VILLAGE AT LONGWOOD RUN PHASE I PB 32/48
7.	DEL SOL VILLAGE AT LONGWOOD RUN PHASE I PB. 33/4
8.	DEL SOL VILLAGE AT LONGWOOD RUN PHASE II PB. 33/24
9.	LONGWOOD RUN PHASE VII PB 36/15
10.	LONGWOOD RUN PHASE VI PB36/PG14

LEGEND

○	PERM. REF. MON. (for Subs)
●	CONC. MON.
—	IRON PIPE
■	CO. SEC. COR. MON. (NEW NUMBERS)

ALTERATIONS

DATE	DESCRIPTIONS
MAY 1964	RE-DRAWN
MAY 1967	PLATS & REVISIONS
JUNE 1977	C.R. 1053/1018
MAY 1980	Personnel Drains Easement per OR 1431/218
SEP 1981	S.F.D. R/W per C.O. 51, 37208 et seq. Parcels 295-297
MAY 1982	COUNTY LINE ROAD R/W per C.O.T. Section 17190-2502
JAN 1983	UNVEN. PLAT
JAN 1983	UNVEN. PLAT
FEB 1983	CD LINE NO INTERSECTION
JUN 1983	COUNTY PROPERTY per OR 1674/2154
SEP 1984	SV 84-24, McIntosh Rd. vacated per OR 1713/1166
APR 1985	ADDED LONGWOOD RUN SUBDIVISION UNIT I

SARASOTA COUNTY, FLORIDA.
SCALE 1"=200' MAY - 1964

N 1/2 SECTION 2
TWP. 36 S. RNG. 18 E.



SHT. NO.
16