

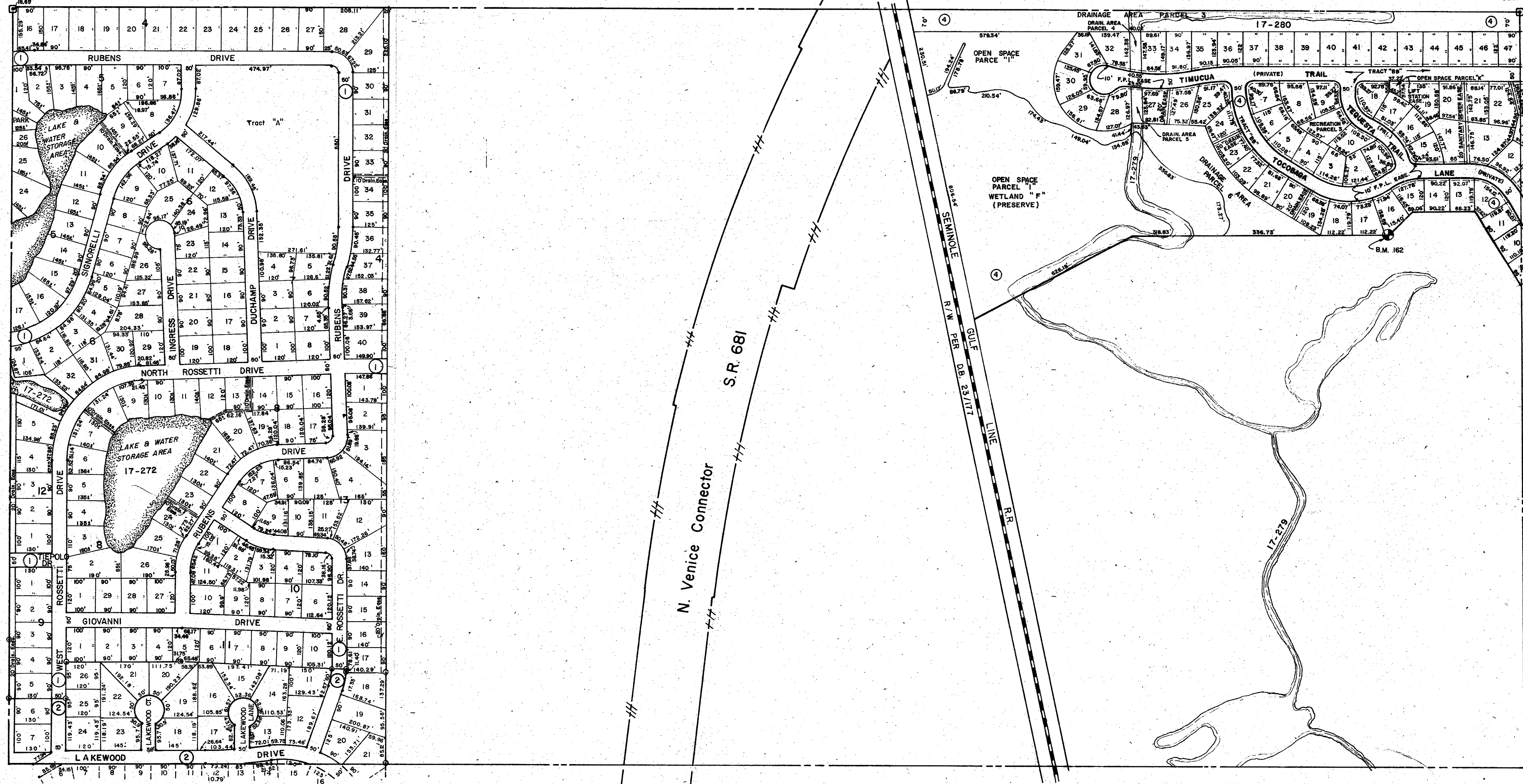
SEC. COR. 317

NE. Cor. W 1/2, NW 1/4

SEC. COR. 408

N 1/2 23-38-18 SHT. NO. 160

N 1/2 19-38-19 SHT. NO. 359



- SUBDIVISION INDEX**
- No. NAME
 - 1. SORRENTO EAST, UNIT 4, 22/25, A-C
 - 2. SORRENTO EAST, UNIT 5, 23/4, 4 A
 - 3. CALUSA LAKES, UNIT I, 35/7-71
 - 4. CALUSA LAKES, UNIT II, 35/34-34F

- LEGEND**
- D.O.T. Limited Access R/W
 - PERM. REF. MON. (for Subs.)
 - CONC. MON.
 - IRON PIPE
 - CO SEC. COR. MON. (NEW NUMBERS)
 - CO. BENCH MARK

DATE	ALTERATIONS	DESCRIPTION
JUN 1992	ADDED CALUSA LAKES UNIT II, PB. 35/34-34F	
AUG 1964	RE-DRAWN	
MAR 1963	RE-NAME R.R.	
FEB 1973	SPLITS & REVISIONS	
FEB 1974	SORRENTO EAST UNIT 4	
FEB 1974	SORRENTO EAST UNIT 5	
FEB 1974	SORRENTO EAST UNIT 2	
JAN 1985	ADDED DDT. Limited Access - 75 R/W	
NOV 1987	ADDED DRAINAGE DITCH & NUMBERS	
MAR 1989	RE-NAME R.R.	
SEP 1990	ADDED R.R. R/W PER D.B. 23/177	
NOV 1991	ADDED CALUSA LAKES UNIT I, PB. 35/7-71	

SARASOTA COUNTY FLORIDA
SCALE: 1" = 200'
AUG 1964

N 1/2 SECTION 24
TWP. 38 S. RNG. 18 E.

SHT. NO.
162

