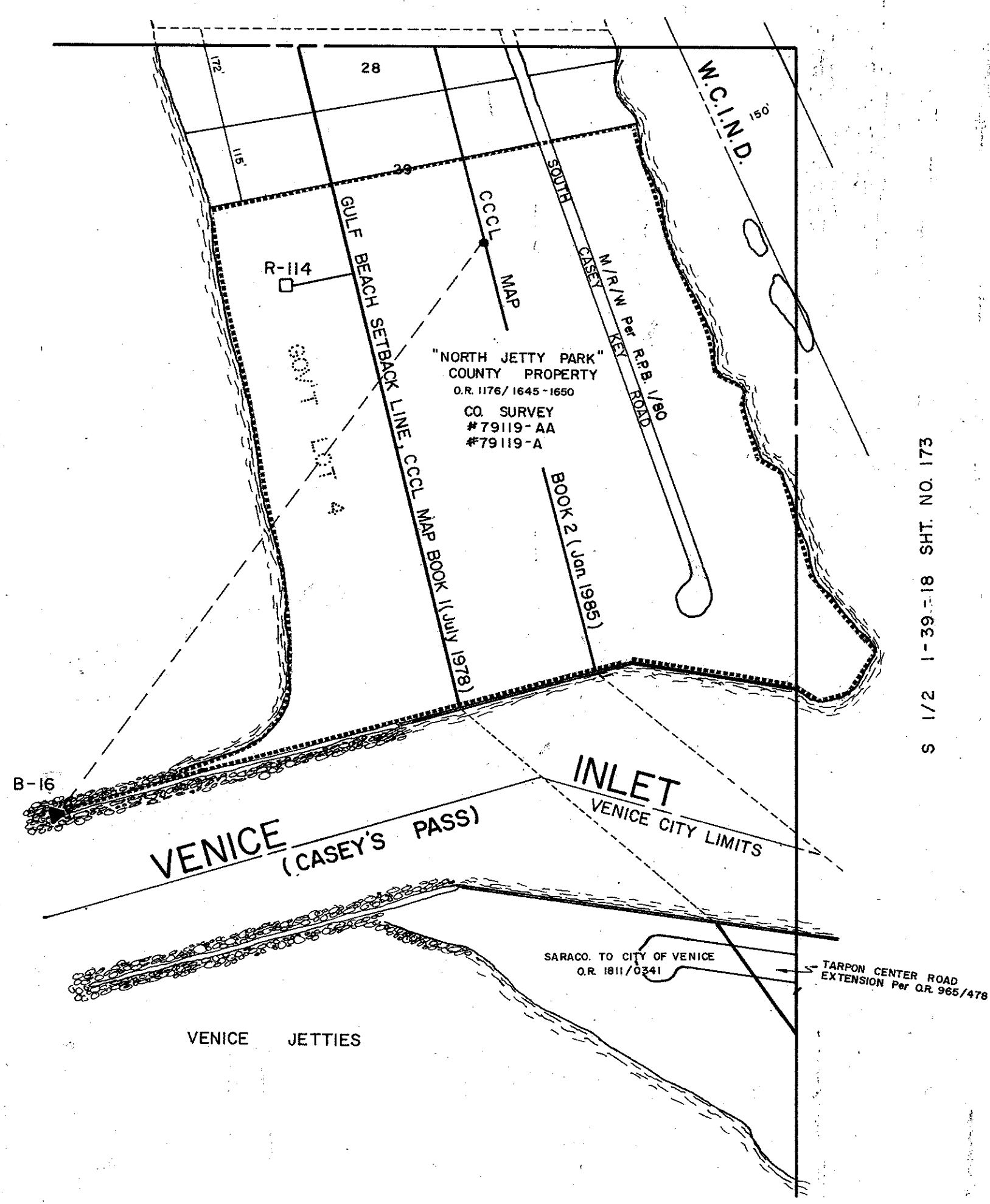


N 1/2 2-39-18 SHT. NO. 174

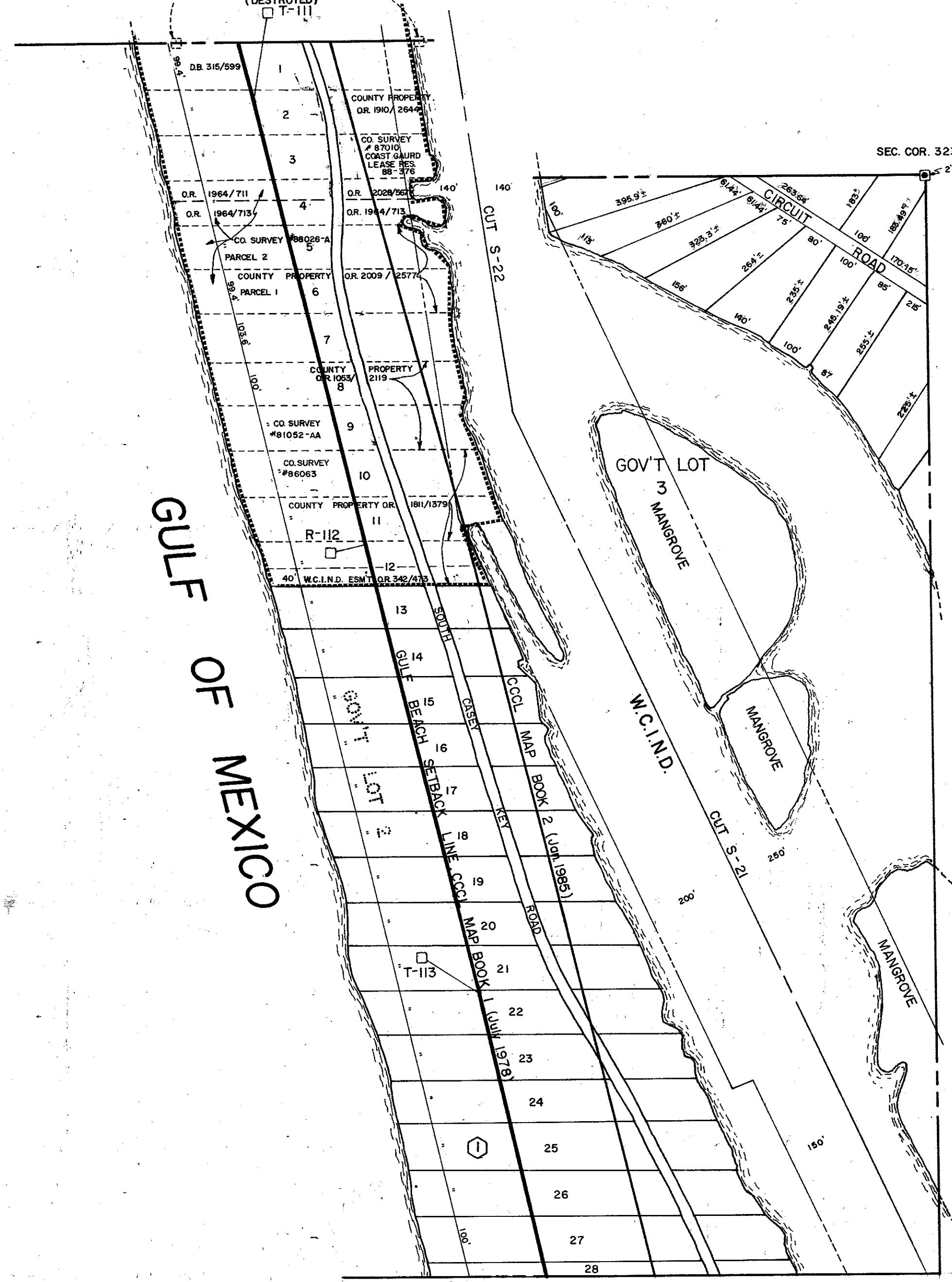
GULF OF MEXICO



S 1/2 1-39-18 SHT. NO. 173

M.C.'s set by C.M. PIDGEON, 1909 (DESTROYED) S 1/2 35-38-18 SHT. NO. 169

GULF OF MEXICO



N 1/2 1-39-18 SHT. NO. 172

S 1/2 2-39-18 SHT. NO. 174

**SUBDIVISION INDEX**

No.	Name
1.	RICHARD H. GEDNEY, INC. NC SUB DB 191/162

- LEGEND:**
- ☐ County Section Corner Monument
  - ⊕ County Bench Mark
  - Permanent Ref. Mon. for Subs.
  - ① Subdivision Index Number

REVISIONS	
DATE	DESCRIPTION
NOV. 1967	REDRAWN
NOV. 1967	SPLITS & REVISIONS
JULY 1969	REVISED SHORE LINE
JUNE 1978	NORTH JETTY PARK - Per O.R. 1176/1645-1650
JUNE 1978	NOKOMIS BEACH - Per O.R. 288/646
DEC. 1980	COUNTY PROPERTY - Per O.R. 1053/2119
OCT. 1982	CORRECTED SECTION CORNER NUMBER
JAN. 1984	ADDED GULF BEACH SETBACK LINE, CCCL
OCT. 1985	COUNTY PROPERTY - Per O.R. 181/1378
OCT. 1986	SOUTH JETTY CORRECTIVE DEED O.R. 181/541-547
JULY 1986	REMOVED COUNTY PROPERTY, RESTORED W.C.I.N.D. PROPERTY LINE
DEC. 1986	COUNTY PROPERTY Per O.R. 1910/2644

**SARASOTA COUNTY, FLORIDA**

Scale: 1" = 200' Date: 5-90  
Drawn By: *[Signature]*

**SECTION 2  
TWP. 39 S. RNG 18 E.**

Sheet No.

174

