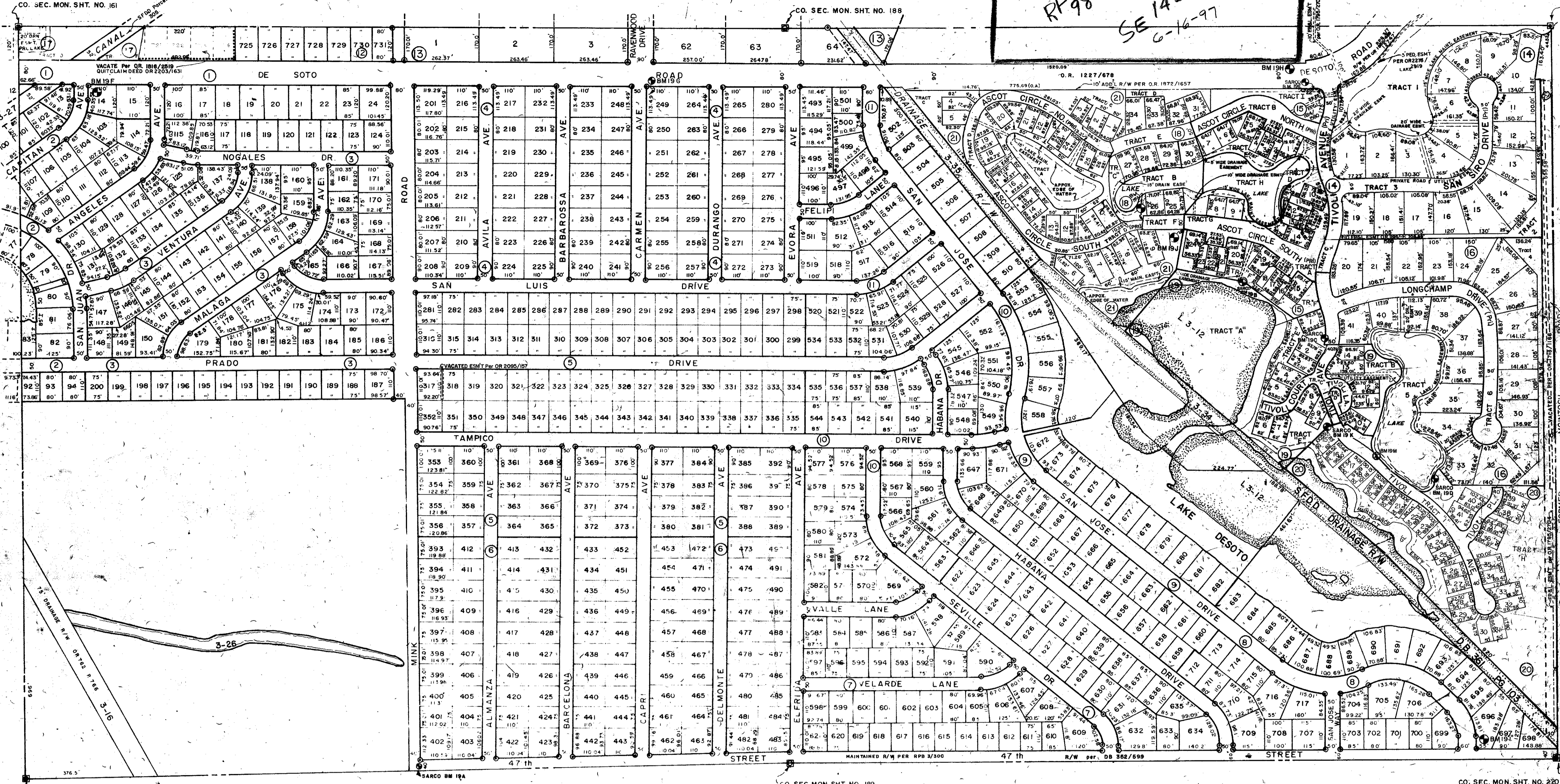


RP 9800  
SE 1422  
6-16-97



S 1/2 4-36-18 SHT. NO. 21

S 1/2 2-36-18 SHT. NO. 17

SUBDIVISION - INDEX

No	Name	Unit No.	Date
1	DE SOTO LAKES, UNIT NO. 1		9/11/15
2	"	3	8/11/17
3	"	4	8/11/18
4	"	5	8/11/19
5	"	6	8/12/0
6	"	7	8/12/1
7	"	10	9/15
8	"	12	9/17
9	"	11	9/16
10	"	9	9/14
11	"	8	9/13
12	"	13	10/85
13	DESOTO PINES SUBDIVISION, UNIT I		P.B. 24/45 A,B
14	LONGWOOD RUN SUBDIVISION, UNIT I		P.B. 30/8,8A
15	LONGWOOD VILLAS SUBDIVISION, UNIT I		P.B. 30/29,29A
16	LONGWOOD RUN SUBDIVISION, UNIT TWO		P.B. 30/41,41A
17	CEDAR CREEK, UNIT NO. II		P.B. 31/7
18	LONGWOOD VILLAS UNIT TWO		P.B. 31/43
19	LONGWOOD VILLAS UNIT THREE		P.B. 32/26 A,B
20	LONGWOOD VILLAS, UNIT 4		P.B. 32/50
21	LONGWOOD VILLAS, UNIT 5		P.B. 34/27

- LEGEND
- PERM REF MON (for Subs)
  - CONC MON
  - IRON PIPE
  - CO SEC M/L (NEW NUMBERS)
  - ⊙ CO BENCH MARK

DATE	DESCRIPTION	BY
MAY 1951	ADDED 5 PERM ESM'S PER OR 2276/2918	JFJ
MAY 1957	ADDED LONGWOOD VILLAS, UNIT 5 P.B. 34/27	JFJ
MAY 1959	ADDED QUITCLAIM PER OR 2263/1631	JFJ
DEC 1959	ADDED MAINTAINED R/W PER R.P. 34/30C	JFJ
FEB 1959	VACATION ESM'T PER OR 2095/157 LOTS 317 & 318 P.B. 8/20	SCB
MAY 1958	LONGWOOD VILLAS UNIT 4 P.B. 32/50	SCB
MAY 1958	ADDED LONGWOOD VILLAS UNIT 3 PER R.B. 32/26	SCB
MAY 1957	ADDED LONGWOOD VILLAS UNIT 2	SCB
JAN 1957	ADDED LONGWOOD VILLAS UNIT 1	SCB
JULY 1956	TO ADD 1/4 OF 2500 S.W. 1/4 TO BE ADDED TO THE PLAT	SCB
JUNE 1956	CEASAR CREEK SUBDIVISION PER R.P. 31/7	SCB
JUNE 1956	CEASAR CREEK SUBDIVISION PER R.P. 31/7	SCB
JUNE 1956	CEDAR CREEK SUBDIVISION PER R.P. 31/7	SCB
JUNE 1956	LONGWOOD RUN SUBDIVISION PER R.P. 30/41	SCB
DEC 1955	ADDED LONGWOOD RUN SUBDIVISION UNIT TWO P.B. 30/41-A	SCB
DEC 1955	ADDED LONGWOOD VILLAS UNIT 5, PER OR 186/259	SCB
OCT 1955	CORRECTED TIVOLI AVENUE, ADDED TRACT C	SCB

SARASOTA COUNTY FLORIDA  
SCALE 1" = 200'  
MAY 1964

S 1/2 SECTION 3  
TWP. 36 S. RNG. 18 E.

SHT. NO.  
19