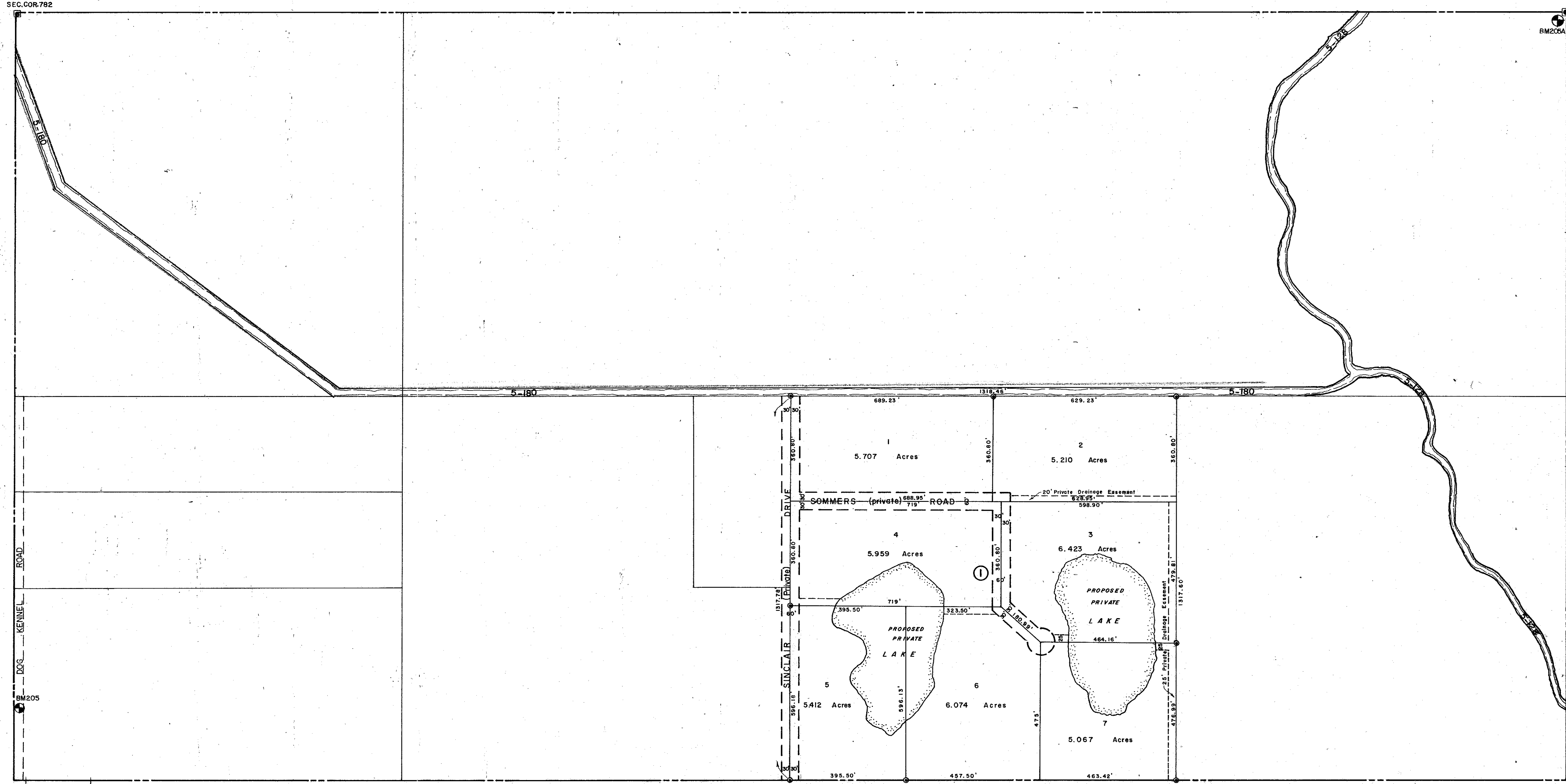


N. 1/2 15-36-19, Sht. No. 207

N. 1/2 13-36-19, Sht. No. 203



SUBDIVISION INDEX

I. Walden Acres Subdivision, P. B. 23/16, 16A

S. 1/2 14-36-19, Sht. No. 206

LEGEND:

- County Section Corner Monument (NEW NOS)
- Reference Point for Subs.
- Permanent Ref. Mon. for Subs.
- ① Subdivision Index Number
- Drainage

REVISIONS	
DATE	DESCRIPTION
July 1972	Sheet Redrawn.
July 1972	Deleted Kachina Acres & Private Road. (See Sht. No. 206)
Feb. 1973	Splits & Revisions
Sept 1973	Added Walden Acres
NOV 1982	SECTION CORNER - DNR'd
MAR 1987	ADDED BM 205 & 205A
SEPT 1987	ADDED CASAL NUMBERS
NOV 1987	ADDED DOG KENNEL ROAD

SARASOTA COUNTY, FLORIDA

Scale: 1" = 200' Date: July 1972

N. 1/2 Section 14  
Twp. 36 S.- Rge. 19 E.

Sheet No.

205

