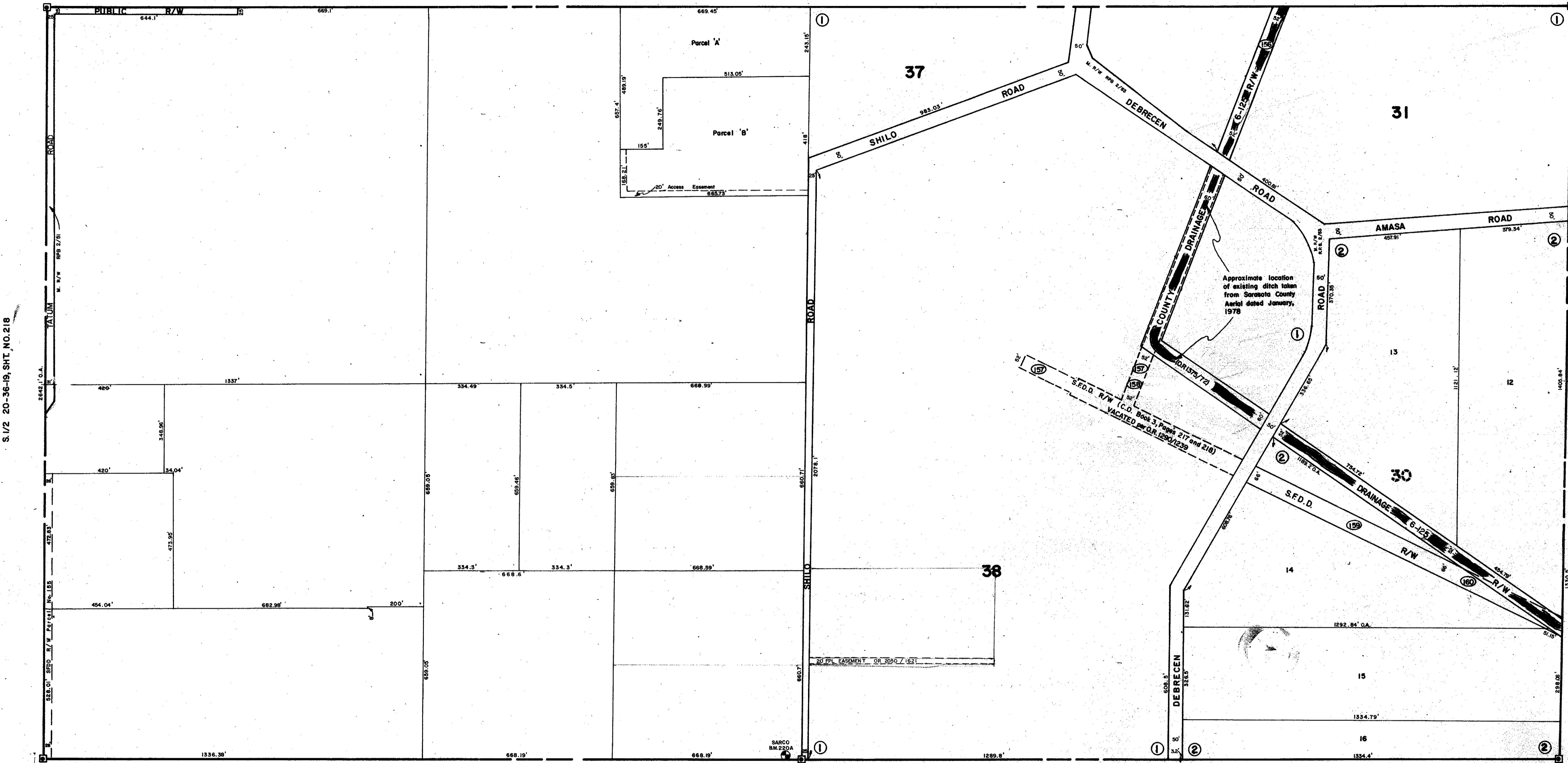


N. 1/2 21-36-19, SHT. NO. 219

SEC. COR. 572

S. 1/2 20-36-19, SHT. NO. 218

S. 1/2 22-36-19, SHT. NO. 222



SEC. COR. 573

5345.96' O.A.  
CO. SEC. COR. MON. SHT. NO. 624

N. 1/2 28-36-19, SHT. NO. 233

**SUBDIVISION INDEX**

NO.	NAME	P.B.
1.	PALMER FARMS, 3rd. Unit	P.B. 3/39
2.	Resub. of part of Blk. 30, PALMER FARMS	P.B. 3/57

**LEGEND:**

- ▣ County Section Corner Monument
- ⊕ County Bench Mark
- Permanent Ref. Mon. for Subs.
- ① Subdivision Index Number
- S.F.D.D. Parcel Numbers

DATE	DESCRIPTION
October, 1980	Revised and added Exchange of S.F.D.D. R/W, O.R. 1290/1239 for 1375/74
SEP. 1981	Added S.F.D.D. R/W, Parcel 105
FEB. 1983	SECTION CORNERS - B.M. 14
MAY 1984	TITIAN R/W FOR R/W 2/21
SEPT 1987	ADDED CANAL NUMBERS
DEC. 1988	20' PPL EASEMENT OR 2050/1621

**SARASOTA COUNTY, FLORIDA**

Scale: 1" = 200' Date: October, 1980

Drawn By: Steve Burkholder

**S 1/2 SECTION 21  
TWP. 36 S., RGE. 19 E.**

Sheet No.

220

