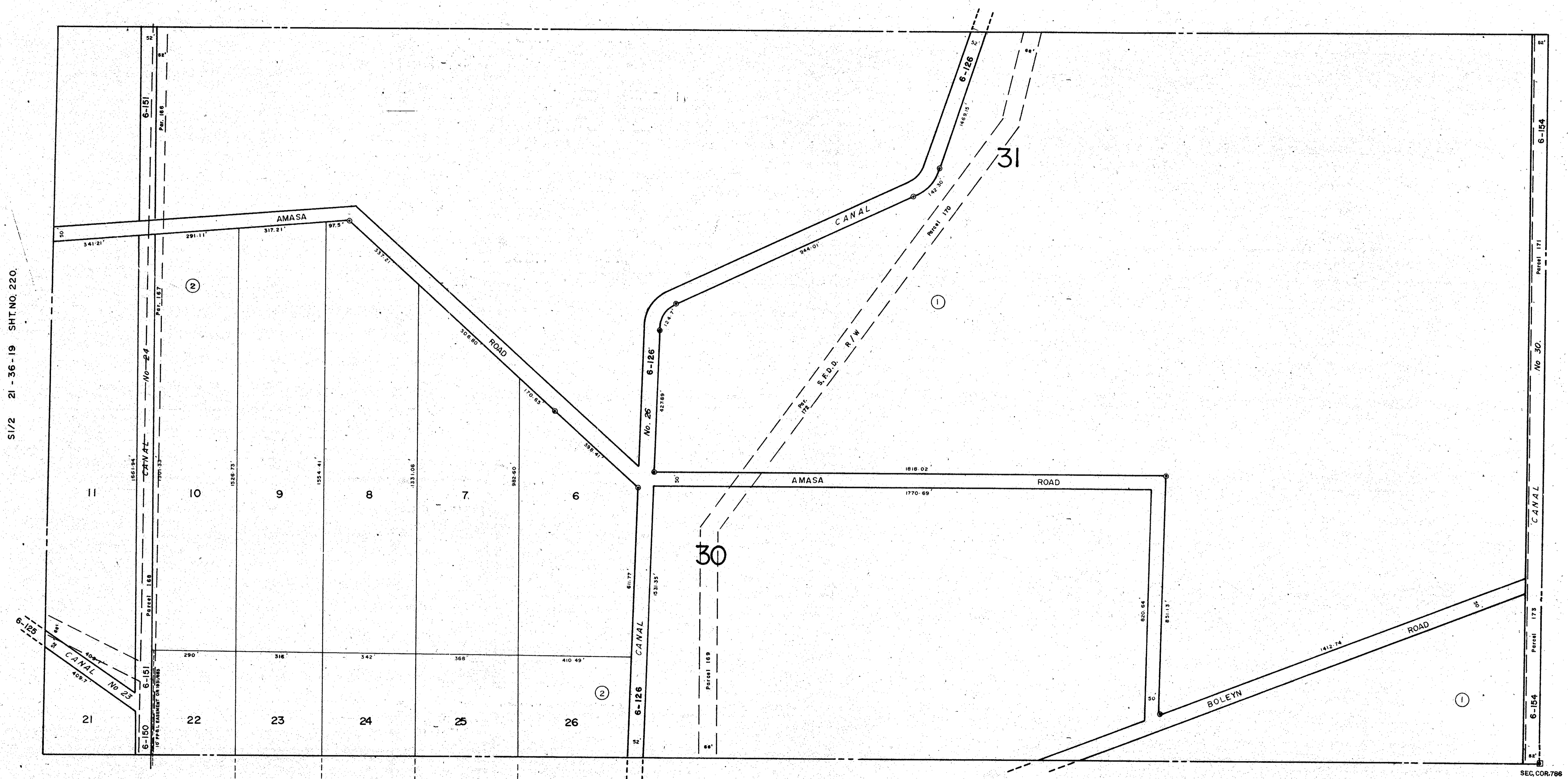


N 1/2 22-36-19 SHT. NO. 221



S 1/2 21-36-19 SHT. NO. 220

S 1/2 23-36-19 SHT. NO. 224

SUBDIVISION INDEX

No.	Name.
1	A RESUB. OF PART OF THE 3rd UNIT OF PALMER FARMS 3/53
2	A RESUB. OF PART OF BLK. 30 OF THE 3rd UNIT OF PALMER FARMS 3/57

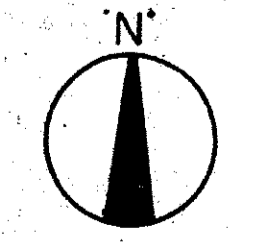
N 1/2 21-36-19 SHT. NO. 231
27

- LEGEND.**
- ⊙ PERM REF MON. (for Subs)
 - CONC. MON.
 - IRON PIPE
 - ⊠ CO. SEC. COR. MON.

ALTERATIONS	
DATE	DESCRIPTION
SEP/1964	RE-DRAWN
SEP/1964	S.F.D. R/W SET
JUNE/1967	NO. 23 CANAL EASEMENT SET
SEPT/1967	ADDED CANAL NUMBERS

SARASOTA COUNTY, FLORIDA.
SCALE: 1" = 200' SEPT. 1964.

S 1/2 SECTION 22
TWP. 36 S. RNG. 19 E.



SHT. NO.
222