

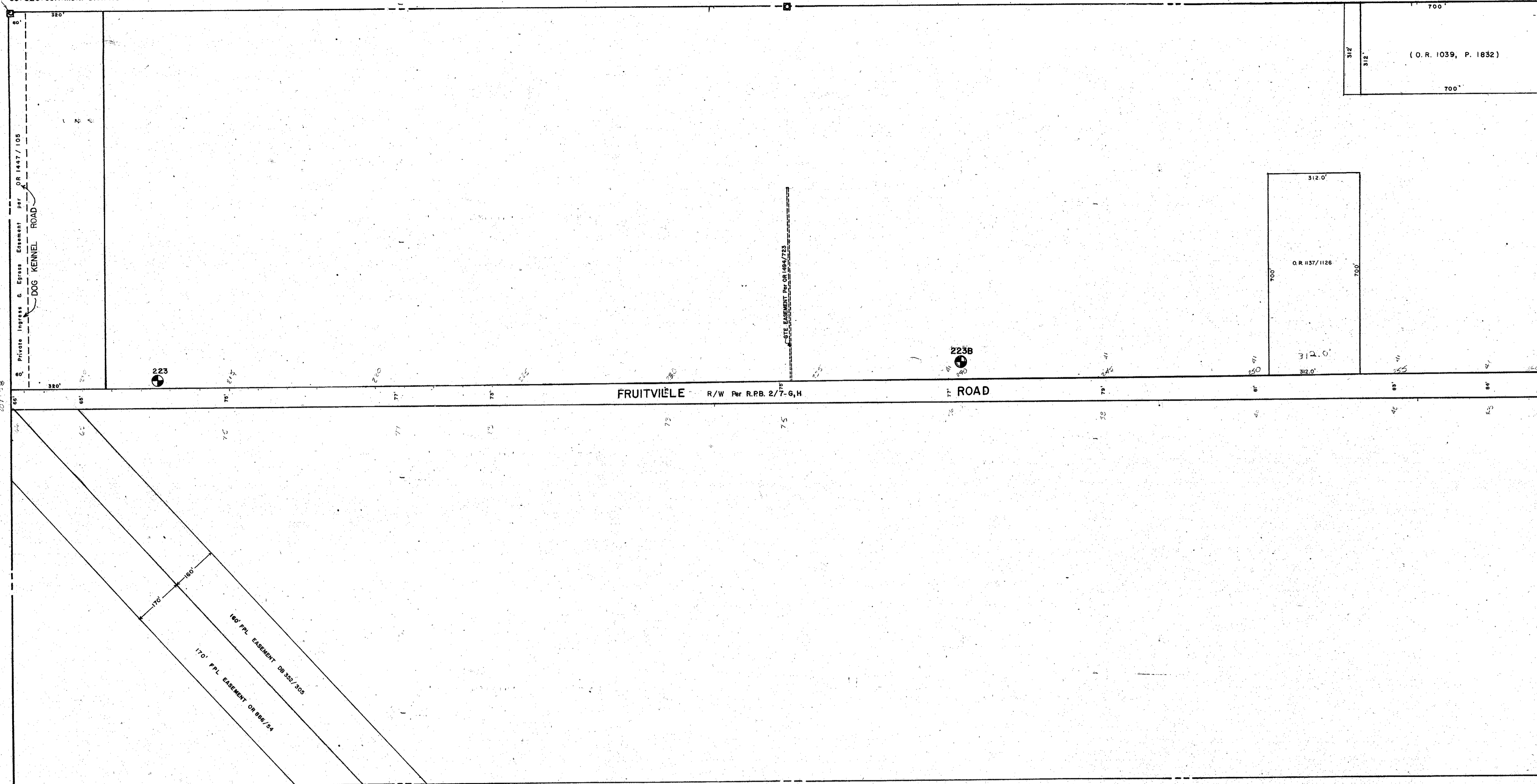
CO. SEC. COR. MON. SHT. NO. 784

S. 1/2 14-36-19 SHT. NO. 206
CO. SEC. COR. MON. SHT. NO. 843

CO. SEC. COR. MON. SHT. NO. 901

N. 1/2 22-36-19 SHT. NO. 221

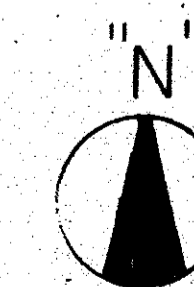
N. 1/2 24-36-19 SHT. NO. 225



S. 1/2 23-36-19 SHT. NO. 224

SUBDIVISION INDEX

No. Name



- LEGEND**
- PERM. REF. MON. (for Subs.)
 - CONC. MON.
 - IRON PIPE
 - CO. SEC. COR. MON. (NEW NUMBERS)
 - ⊕ CO. BENCH MARK

ALTERATIONS		
DATE	DESCRIPTION	D.G.N.
Aug. 1975	Revision O.R. 1039/1832.	L.R.T.
NOV 1977	SPLIT - O.R. 1137/1126	J.R.Y.
AUG 1981	Private Road per OR 1447/105	J.R.Y.
MAR 1987	ADDED BM 223, 223A	B.L.L.
NOV 1987	ADDED DOG KENNEL ROAD	B.L.L.
APR 1988	ADDED RM 223B 223A CHANGED TO 221A	B.L.L.
NOV 1988	ETE EASEMENT Per OR 1484/723	S.C.B.
FEB 1989	FPL 150' EASEMENT DB 352/305	S.C.B.
FEB 1989	FPL 170' EASEMENT DB 886/54	S.C.B.
JULY 1990	CORRECTED FRUITVILLE RD. R/W	S.C.B.

SARASOTA COUNTY FLORIDA
SCALE: 1" = 200'
APR. 1968

N. 1/2 SECTION 23
TWP. 36 S. RGE. 19 E.

SHT. NO.
223