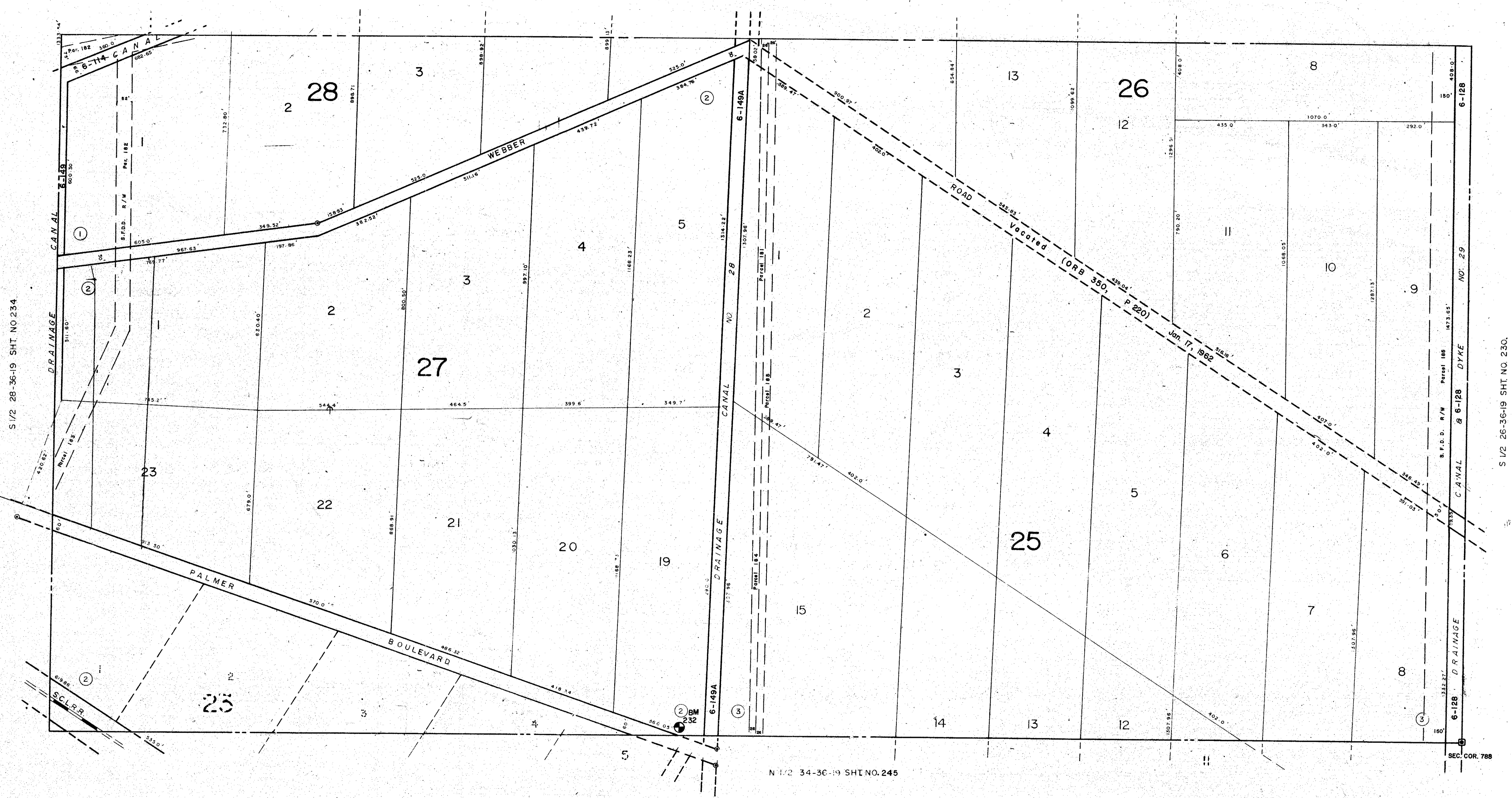


N 1/2 27-36-19 SHT NO 231



S 1/2 28-36-19 SHT NO 234

S 1/2 26-36-19 SHT. NO. 230.

N 1/2 34-36-19 SHT NO. 245

**SUBDIVISION INDEX**

No.	Name.
1.	PALMER FARMS, 3rd UNIT. 3/39
2.	PALMER FARMS, 3rd UNIT. 3/39B.
3.	A RESUB OF A PART OF PALMER FARMS, 3rd UNIT 3/53.

- LEGEND**
- ⊙ PERM. REF. MON (for Subs)
  - CONC. MON.
  - IRON PIPE.
  - ⊠ CO-SEC. COR. MON.
  - ⊕ CO. BENCH MARK

DATE	ALTERATIONS DESCRIPTION
SEPT 1964	RE-DRAWN
AUG 1960	RE-NAMED R. R.
DEC 1975	VOCATED WEBBER RD. (ORB 350, P 220)
SEP 1981	S.F.D.D. R/W Parcels 181-195
OCT 1982	SECTION CORNER - DNR G
SEPT 1987	ADDED CANAL NUMBERS
MAR 1988	ADDED BM 632

SARASOTA COUNTY FLORIDA  
SCALE 1" = 200'  
SEPT. 1964.

**S 1/2 SECTION 27**  
**TWP. 36 S. RNG. 19 E.**

SHT. NO.  
**232**