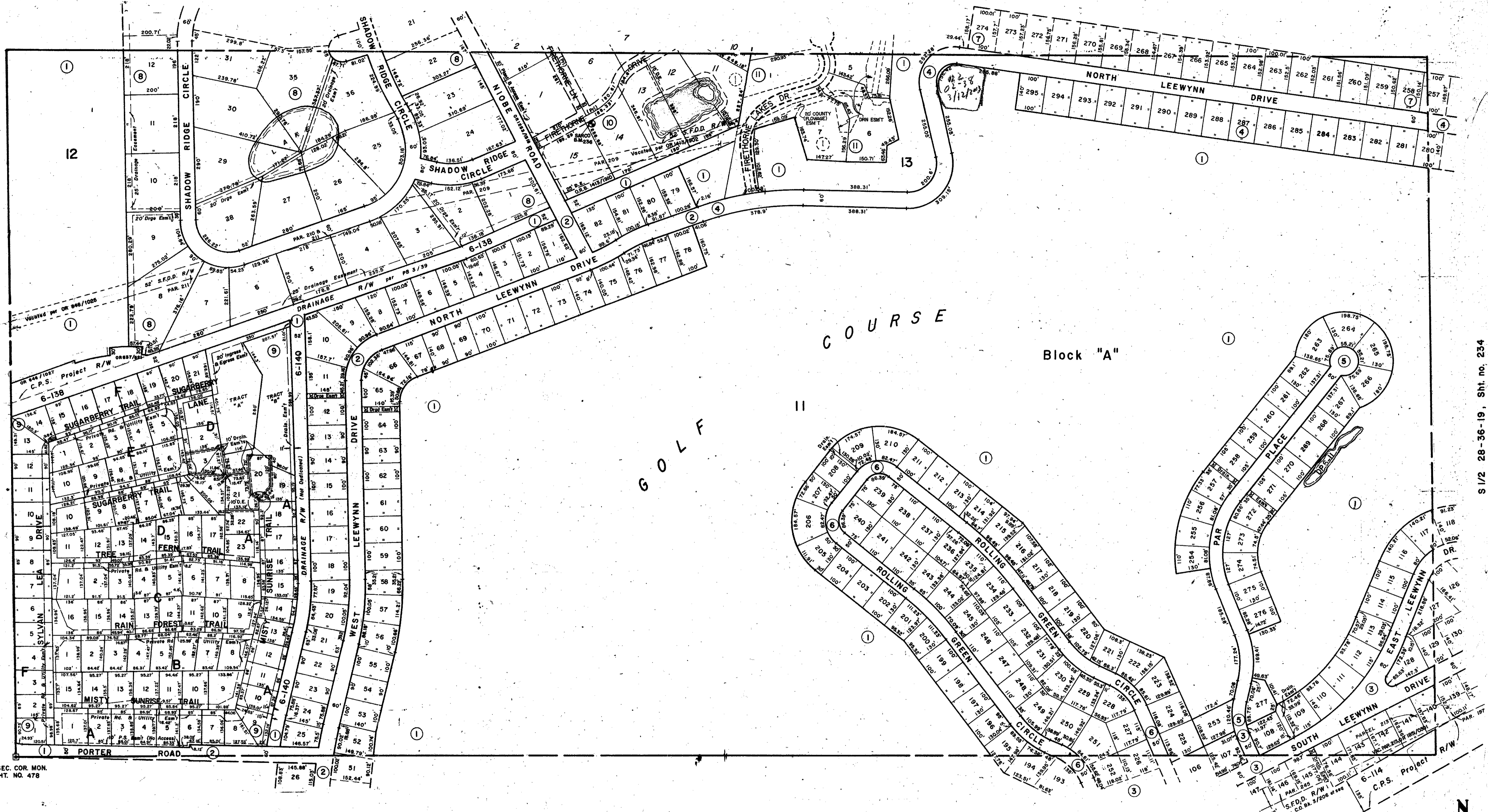


S 1/2 30-36-19, Sht. no. 238

S 1/2 28-36-19, Sht. no. 234



CO. SEC. COR. MON.  
SHT. NO. 478

**SUBDIVISION INDEX**

No.	Name	Unit
1.	PALMER FARMS, Third Unit	3 / 39
2.	SARASOTA GOLF CLUB COLONY, Unit 1	9/94 & 94 A
3.	SARASOTA GOLF CLUB COLONY, Unit 2	10/8 & 8 A
4.	SARASOTA GOLF CLUB COLONY, Unit 3	10/12
5.	SARASOTA GOLF CLUB COLONY, Unit 4	10/13
6.	SARASOTA GOLF CLUB COLONY, Unit 5	10/46
7.	SARASOTA GOLF CLUB COLONY, Unit 6	10/52
8.	SHADOWWOOD SUBDIVISION	25 / 17
9.	SYLVAN LEA	26 / 22 - 22
10.	FIRETHORNE ESTATES	29/23
11.	FIRETHORNE LAKES	33/43

**LEGEND:**

- ☐ County Section Corner Monument (New Nos)
- County Bench Mark
- Permanent Ref. Mon. for Subs.
- ① Subdivision Index Number

DATE	DESCRIPTION	BY
Nov. 1979	Redrawn & Added "SYLVAN LEA"	JWE
AUG. 1981	Drainage Exchange OR 115/100, EX 90-19	JUN
JULY 1983	NOBE RD. per CS 1263/1616	JUN
SEPT. 1983	FIRETHORNE ESTATES	RAJ
AUG. 1984	Added Dimensions to Sub. 10	JUN
OCT. 1985	ADDED PARCEL BENCH MARK 238	PJB
SEPT. 1987	ADDED CANAL NUMBERS	RCS
DEC. 1989	ADDED FIRETHORNE LAKES PARCEL 212 Per OR 2100/15	SCB
	ADDED FIRETHORNE LAKES PB. 33/43	KLP

**SARASOTA COUNTY, FLORIDA**

Scale: 1" = 200' Date: NOV. 1979  
Drawn By: J.W. Esber

**S 1/2 SECTION 29  
TWP. 36 S., RGE. 19 E.**

Sheet No.

236

ENGINEERING 44-511 16772