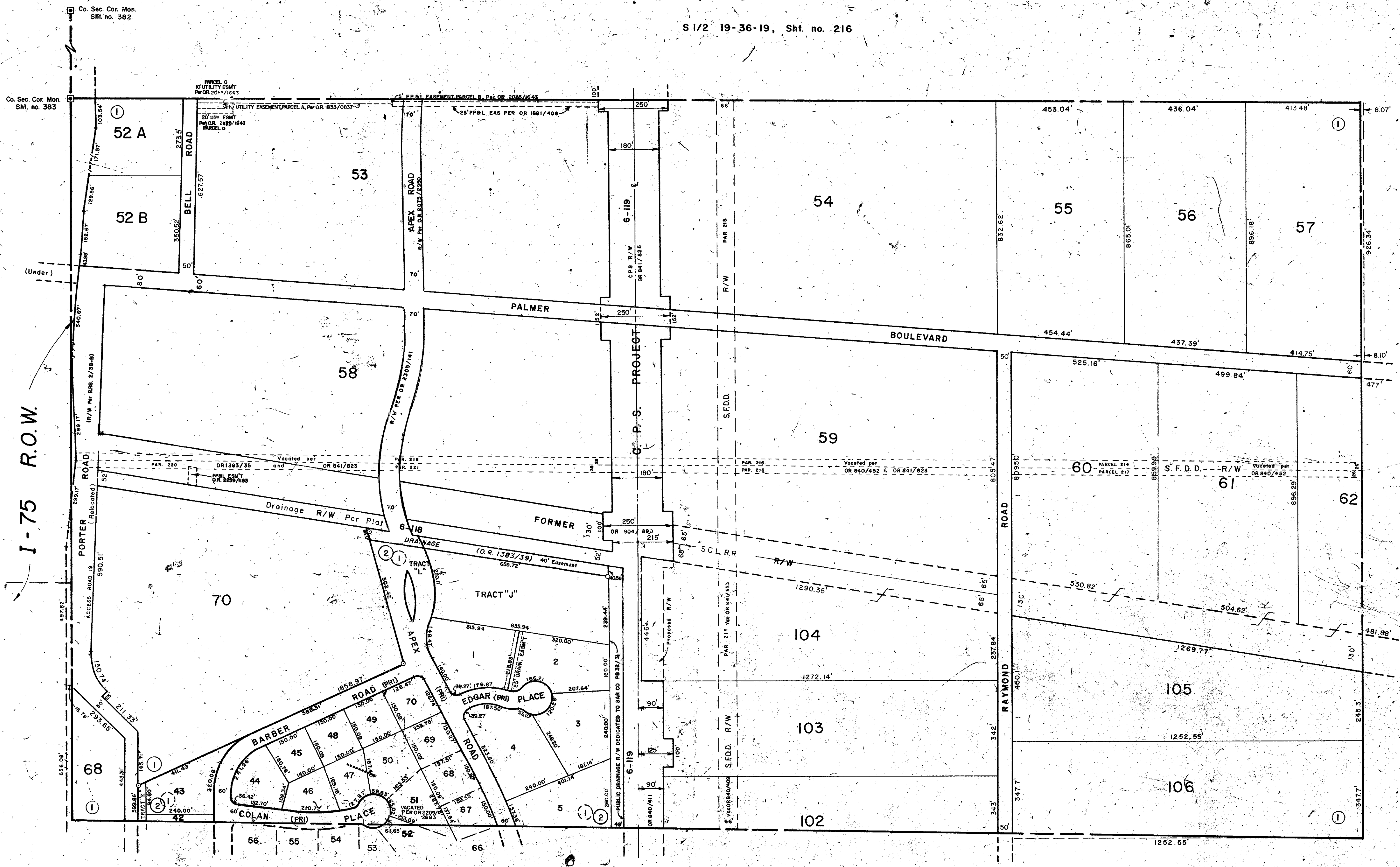


N 1/2 25-36-18, Sht. no. 48

S 1/2 25-36-18, Sht. no. 49

N 1/2 29-36-19, Sht. no. 235



SUBDIVISION INDEX

No.	Name
1.	PALMER FARMS, Second Unit 3/20 & 20A
2.	EASTERN INDUSTRIAL PARK SECTION II PB 32/31

- LEGEND:**
- County Section Corner Monument (New No.)
 - ⊕ County Bench Mark
 - Permanent-Ref. Mon. for Subs.
 - ① Subdivision Index Number
 - D.O.T. Limited Access R/W

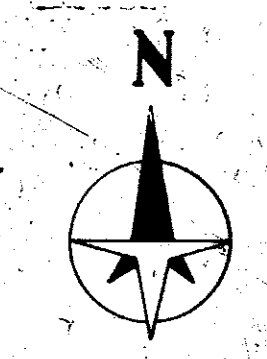
REVISIONS

DATE	DESCRIPTION
MAR 1979	Redrawn
OCT 1980	Exchange SFDD permit per 219,220 per O.R. 1383/35 for O.R. 1383/39
AUG 1981	Added OR numbers for S.F.D.D. violations, C.P.S. R/W applications
JUL 1982	Identified J-75 Access Road Per DOT
MAY 1983	Added DOT LIMITED ACCESS SYMBOL TO LEGEND
FEB 1986	CORRECTED SFDD R/W PAR 215 & 216
FEB 1986	ADDED SUPPLY EASEMENTS PER OR 1833/2836,0837
JAN 1987	ADDED SUPPLY EASEMENTS PER OR 1833/2836,0837
JUL 1988	ADDED EASTERN INDUSTRIAL PARK SECTION II PB 32/31
MAY 1988	WARRANTY CEDED FENCE FARM TO SARCO PROPOSED TO R/W OR 2075/2900
JAN 1989	O.R. 1833/355 RECORDED TO O.R. 2082/1645

SARASOTA COUNTY, FLORIDA

Scale 1" = 200' Date: March 1979

**N 1/2 SECTION 30
TWP. 36 S, RGE. 19 E.**



Sheet No.
237