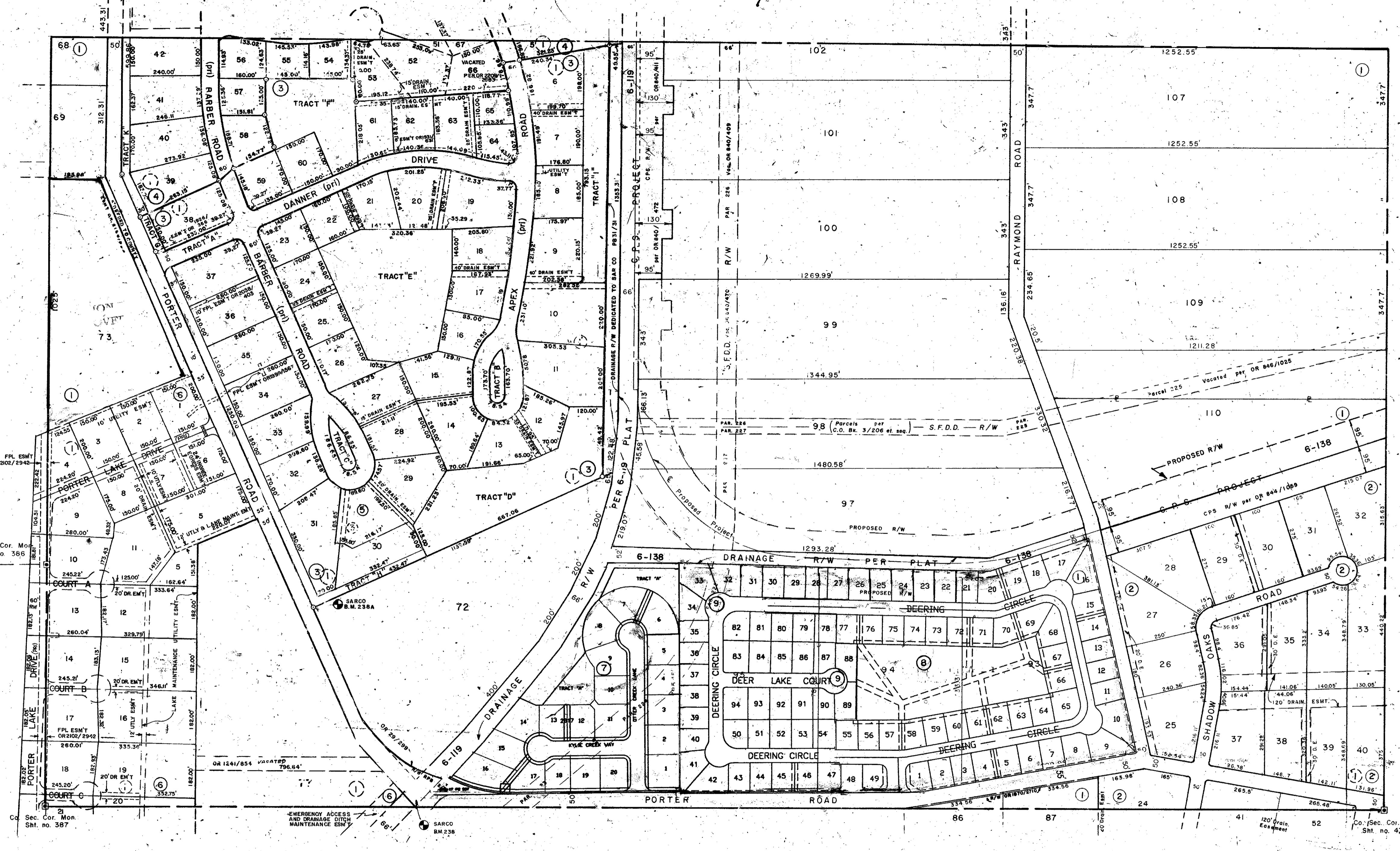


S 1/2 25-36-18, Sht. no. 49

N 1/2 36-36-18, Sht. no. 64

S 1/2 29-36-19, Sht. no. 236



SUBDIVISION INDEX

- | NO. | Name |
|-----|--|
| 1 | PALMER FARMS, Second Unit 3/20-20A |
| 2 | SHADOW OAKS 23/9-9B |
| 3 | EASTERN INDUSTRIAL PARK Section I, 31/31 |
| 4 | EASTERN INDUSTRIAL PARK Section II, PB 32/31 |
| 5 | BRECKENRIDGE BUSINESS PARK, A CONDO, UNIT I - CB, 27/30. |
| 6 | INTERSTATE LAKE INDUSTRIAL PARK P.B. 33/29 |
| 7 | OTTER CREEK ESTATES PB37/49 |
| 8 | DEERPIED PHASE 1 PB 38/24 |
| 9 | DEERPIED PHASE 2 PB 40/10 |

- LEGEND:**
- County Section Corner Monument (New No.)
 - County Bench Mark
 - Permanent Ref. Mon. for Subs.
 - ① Subdivision Index Number

DATE	DESCRIPTION	BY
MAR 1979	Redrawn	JWE
AUG 1979	Exchanged pgs. 225, S.F.D.D. R/W (C.O. No. 3/206 et seq.) OR 846/1025 for C.P.S. R/W OR 846/1027	JWE
AUG 1981	Added S.F.D.D. Parcels, Vacations & C.P.S. OR numbers to County	JWE
FEB 1988	CONVERTED S.F.D.D. R/W PAR 225, 226, 227 & 228	RJJ
NOV 1988	ADDED EASTERN INDUSTRIAL PARK, SECTION I	C.C.
APR 1987	ADDED EASTERN INDUSTRIAL PARK, SECTION II	SAR
JUNE 1987	ADDED EASEMENT OR 1930/671	RJA
SEPT 1987	ADDED CHAL. NUMBERS	PAR
SEPT 1987	R/W to CO. per OR 1970/2710 (Porter Rd.)	PAR
FEB 1988	12' F.P.A.L. EASEMENT OR 1999/1567	TSD

SARASOTA COUNTY, FLORIDA

Scale 1" = 200' Date March 1979

**S 1/2 SECTION 30
TWP. 36 S, RGE. 19 E.**

Sheet No. **238**