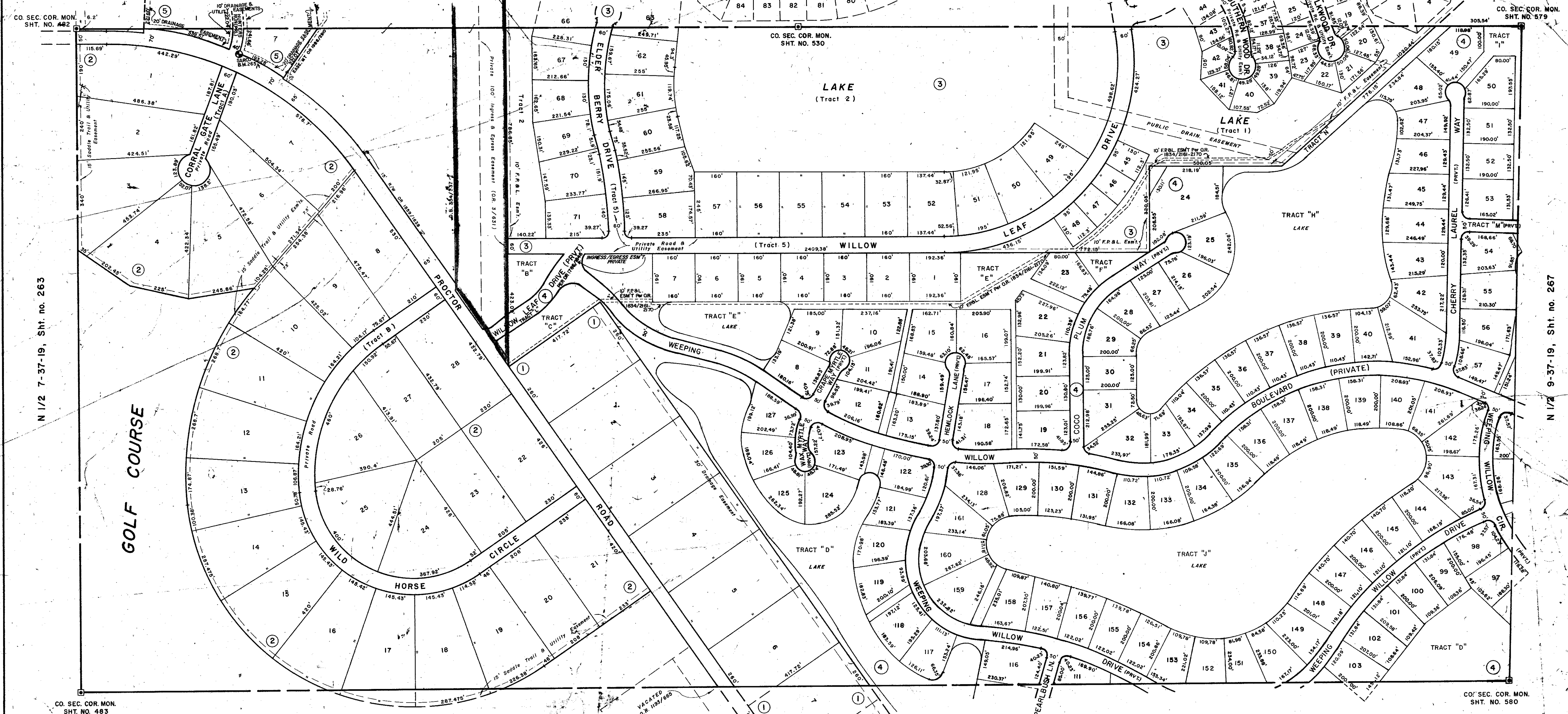


S 1/2 5-37-19, Sht. no. 260

N 1/2 7-37-19, Sht. no. 263

N 1/2 9-37-19, Sht. no. 267



S 1/2 8-37-19, Sht. no. 266

SUBDIVISION INDEX

No.	Name	
1.	DUNNHILL ESTATES	21 / 23
2.	FOXFIRE SUBDIVISION	23 / 33-33E
3.	BENT TREE VILLAGE SUBDIVISION, Unit 2	26 / 36-36E
4.	BENT TREE VILLAGE, UNIT 3	PB 30/14-14F
5.	HUNTERS RUN SUBDIVISION,	PB 30/36-36B

LEGEND:

- ☐ County Section Corner Monument (New Nos)
- ⊕ County Bench Mark
- ⊙ Permanent Ref. Mon. for Subs.
- ① Subdivision Index Number

DATE	DESCRIPTION	BY
DEC 1979	Redrawn & Added BENT TREE VILLAGE SUB, Unit 2	JWE
JUNE 1985	ADDED BENT TREE VILLAGE, UNIT 3 PB 30/14-14F	RJL
OCT 1985	ADDED HUNTERS RUN SUBDIVISION PB 30/36-36B	PJB
OCT 1985	EXPRESS/EGRESS ESM'S DEDICATION PER OR 1786/1846	PJB
APRIL 1986	10' F.P.B.L. ESM'S PER OR 1834/2161-2170	PJB
JUNE 1986	Added COUNTY PROPERTY, per OR 1859/1838	WFW
AUG 1, 1987	Corrected Co. Prop. to Add 10' RW - PAR - OR 1859/1838 (PROCTOR RD) WFW	WFW
JAN 1988	10' F.P.B.L. EASEMENT PER OR 1846/2160	PAR

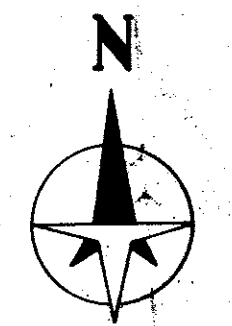
SARASOTA COUNTY, FLORIDA

Scale: 1" = 200' Date: DEC. 1979

**N 1/2 SECTION 8
TWP 37 S., RG 9 E.**

Sheet No.

265



BRUNING 44-511-16772