

CO. SEC. COR. MON. SHEET NO. 683

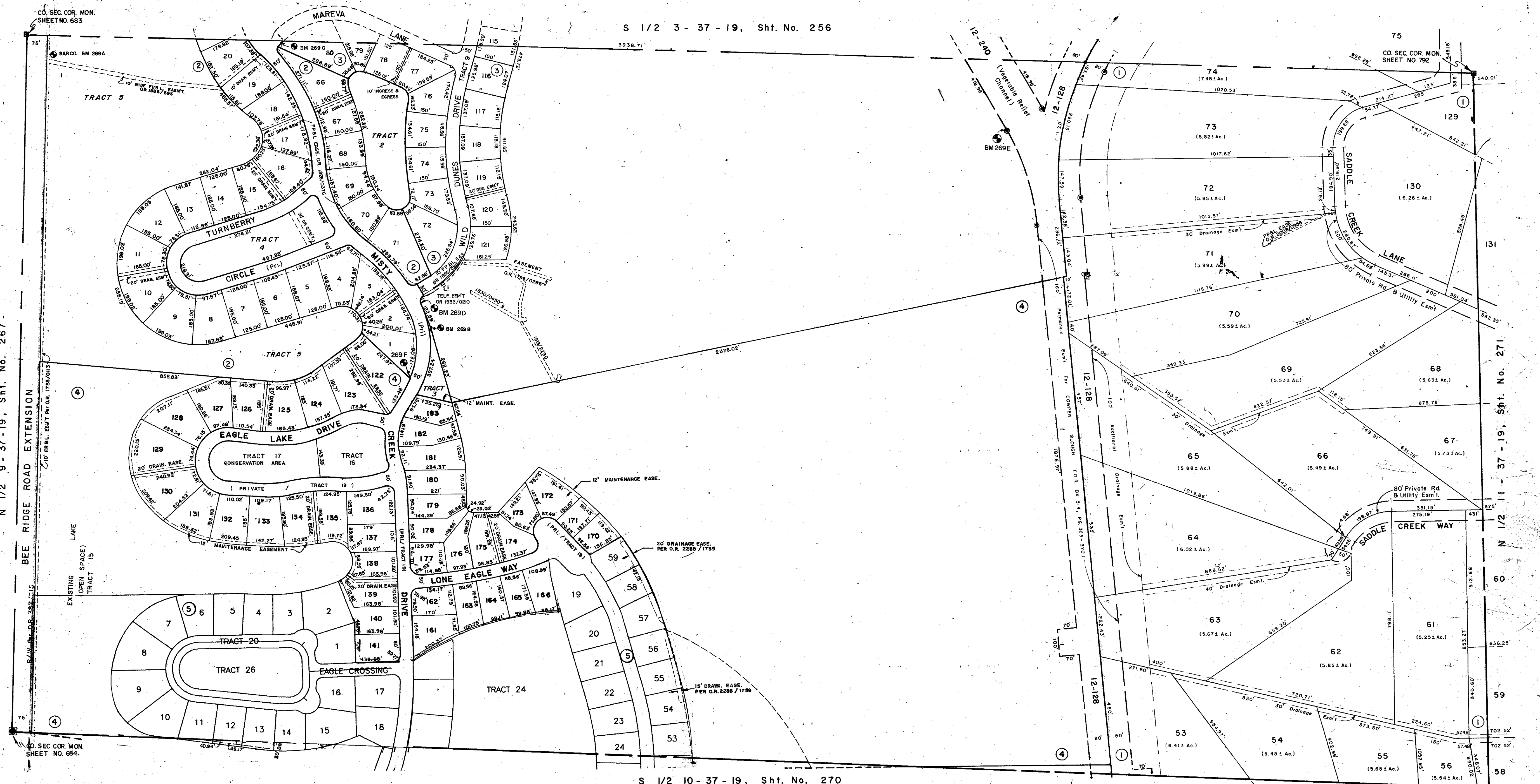
S 1/2 3 - 37 - 19, Sht. No. 256

CO. SEC. COR. MON. SHEET NO. 792

N 1/2 9 - 37 - 19, Sht. No. 267

S 1/2 11 - 37 - 19, Sht. No. 271

S 1/2 10 - 37 - 19, Sht. No. 270



SUBDIVISION INDEX

1. SADDLE CREEK UNIT 3	28/30-30D	
2. THE PRESERVE AT MISTY CREEK, UNIT 1		PB 31/28-28 E
3. " " " " UNIT 2		PB 33/10-10 D
4. " " " " UNIT 3		PB 35/35-35 D
5. " " " " UNIT 4		PB 37/15

- LEGEND:**
- ▣ Section Corner Monument (NEW NUMBERS)
 - ⊙ Permanent Reference Monument
 - Reference Point for Subdivisions
 - ① Subdivision Index Number
 - Drainage

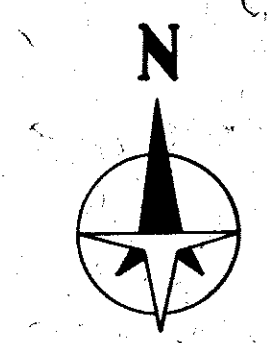
DATE	REVISIONS	DESCRIPTION	BY
AUG. 1992	ADDED THE PRESERVE AT MISTY CREEK, UNIT 3		WJM
NOV. 1993	ADDED R/W PER O.R. 307/315 ON BEE RIDGE RD.		KLP
NOV. 1989	ADDED THE PRESERVE AT MISTY CREEK, UNIT 2	BB 35/10-10 D	TSD
APRIL 1988	ADDED THE PRESERVE AT MISTY CREEK, UNIT 1		WJM
MAY 1988	ADDED FPL EASEMENT PER O.R. 2008/0956		RJJ
JUNE 1987	ADDED FPL EASEMENT PER O.R. 1945/0276		TSD
JUNE 1987	TELEPHONE EASEMENT PER O.R. 1933/0220		SAG
NOV. 1986	FPL EASEMENT PER O.R. 1955/288		RJJ

SARASOTA COUNTY, FLORIDA

Scale: 1" = 200' Date: January 1975

Drawn By: D.G.N.

N. 1/2 Section 10
Twp. 37 S. Rge. 19 E.



Sheet No.
269

BRUNING 44-511 16772