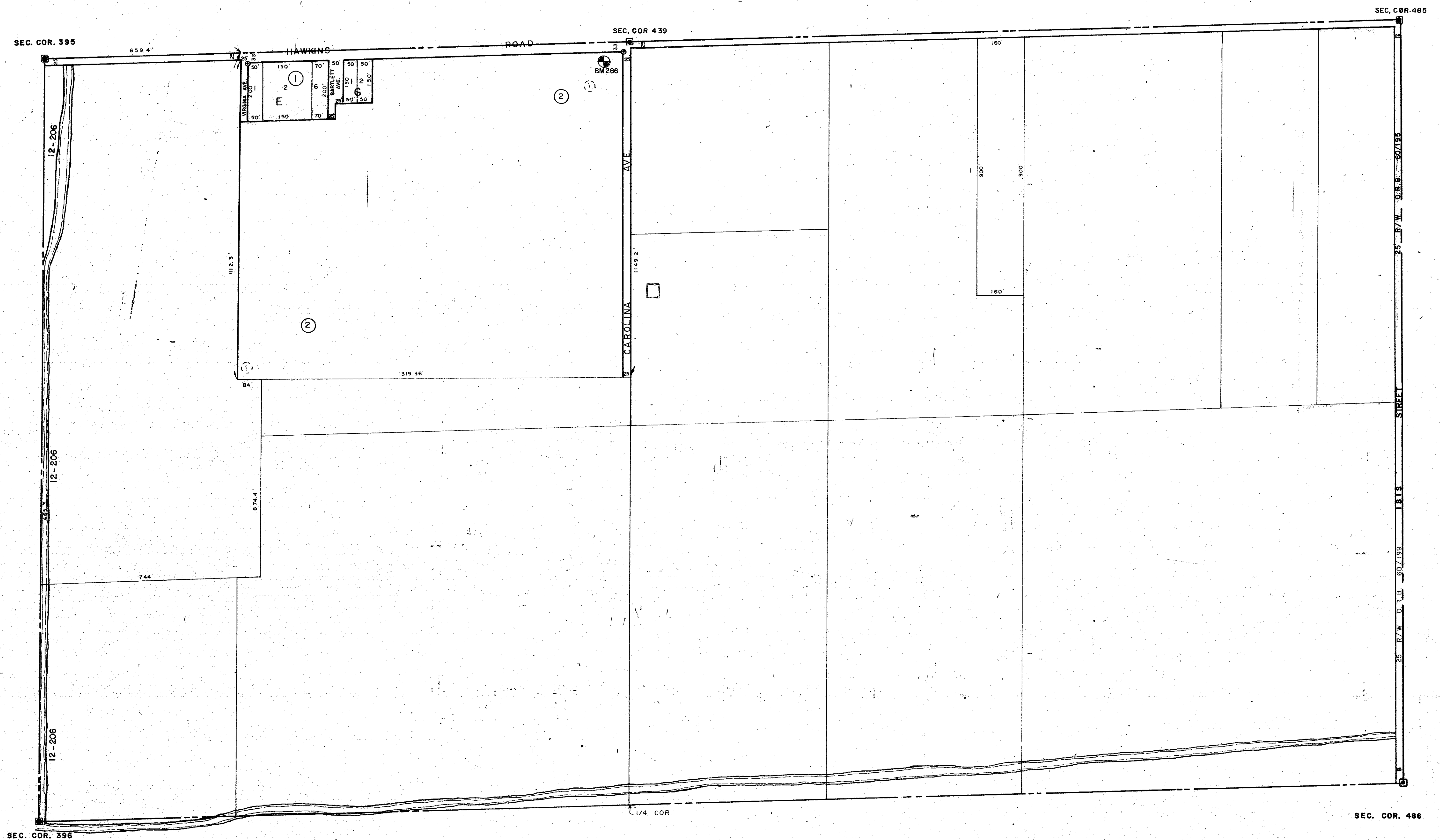


N 1/2 18 - 37 - 19 SHT. NO. 285



S 1/2 13 - 37 - 18 SHT. NO. 96

S 1/2 17 - 37 - 19 SHT. NO. 284

N 1/2 19 - 37 - 19 SHT. NO. 287

**SUBDIVISION INDEX**

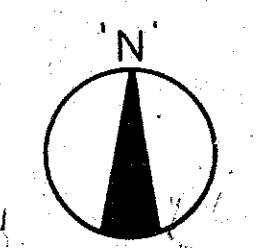
No.	Name
1	SARASOTA RIDGELAND 2/219
2	VACATING A PART OF SARASOTA RIDGELAND 3/70

- LEGEND**
- PERM. REF. MON. (for Subs.)
  - CONC. MON.
  - IRON PIPE
  - ⊕ CO. SEC. COR. MON. (NEW NUMBERS)
  - ⊙ CO. BENCH MARK

ALTERATIONS	
DATE	DESCRIPTION
DEC 1967	SPLITS & REVISIONS
JAN 1979	1818 AVENUE R/W per OR 60/195 & 199
JUN 1980	Corrected Section Corner Numbers
MAY 1983	SECTION CORNER DNR's
MAR 1987	ADDED BM 286
OCT 1987	ADDED DRAINAGE DITCHES & NUMBERS
MAR 1990	CHANGED 1818 AVE TO 1818 STREET
JAN 1992	REVISED LOTTING

SARASOTA COUNTY FLORIDA  
SCALE: 1" = 200'  
MAR 1965

S 1/2 SECTION 18  
TWP. 37 S. RNG. 19 E.



SHT. NO.  
286