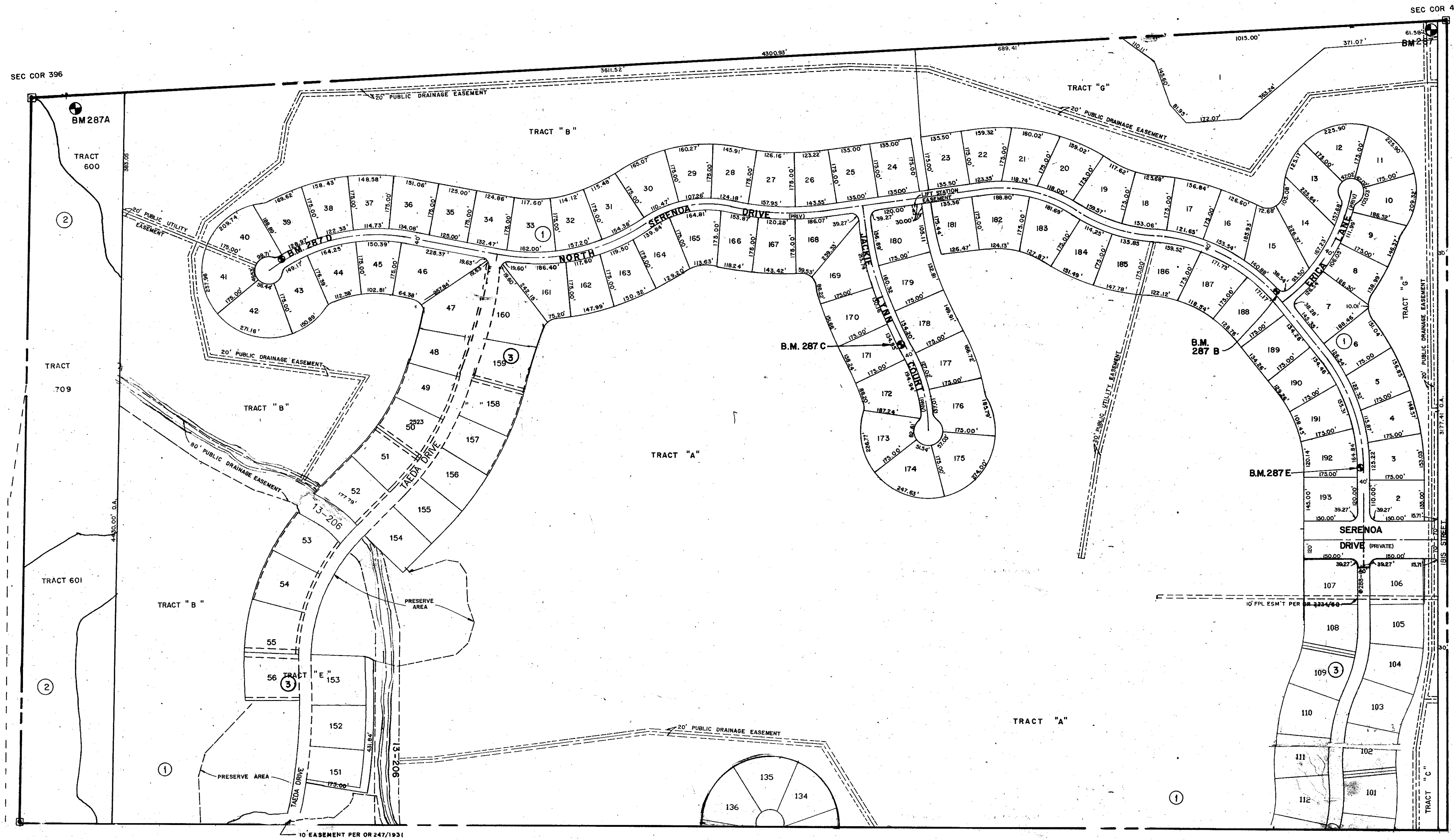


N 1/2 24-37-18, SHT. NO. 117

N 1/2 20-37-18, SHT. 289



SUBDIVISION INDEX

1	SERENOA PB. 34 P. 40
2	SERENOA LAKES PB 40/31
3	SERENOA II PB36/PG7

- LEGEND:
- ☐ County Section Corner Monument
  - County Bench Mark
  - Permanent Ref. Mon. for Subs.
  - ① Subdivision Index Number

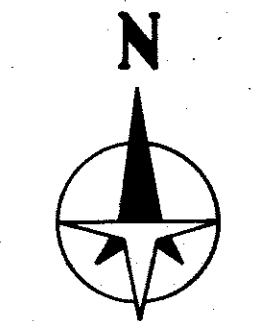
REVISIONS	
DATE	DESCRIPTION
FEB 1974	ADDED C&G PROJ. 43 PER SWR PROJ NO 778
JAN 1975	IBIS AVE R/W OR 62/434
JUN 1982	CORRECTED SECTION CORNER
MAY 1983	SECTION CORNER CHG 4
SEP 1987	REDRAWN
OCT 1987	ADDED DRAINAGE DITCH & NUMBERS
AUG 1990	CHANGED IBIS AVE. TO IBIS STREET
OCT 1990	ADDED 10' P&L ESM'T PER O&G 2234/60
NOV 1992	ADDED SERENOA SUBG. P.B. 34 PG. 40
DEC 1993	ADDED 10' ESM'T PER OR 247/1931

SARASOTA COUNTY, FLORIDA

Scale: 1" = 200' Date: NOV 1990

Drawn By: M.J.H.

N 1/2 SECTION 19  
TWP 37S, RNG 19E



Sheet No.  
287