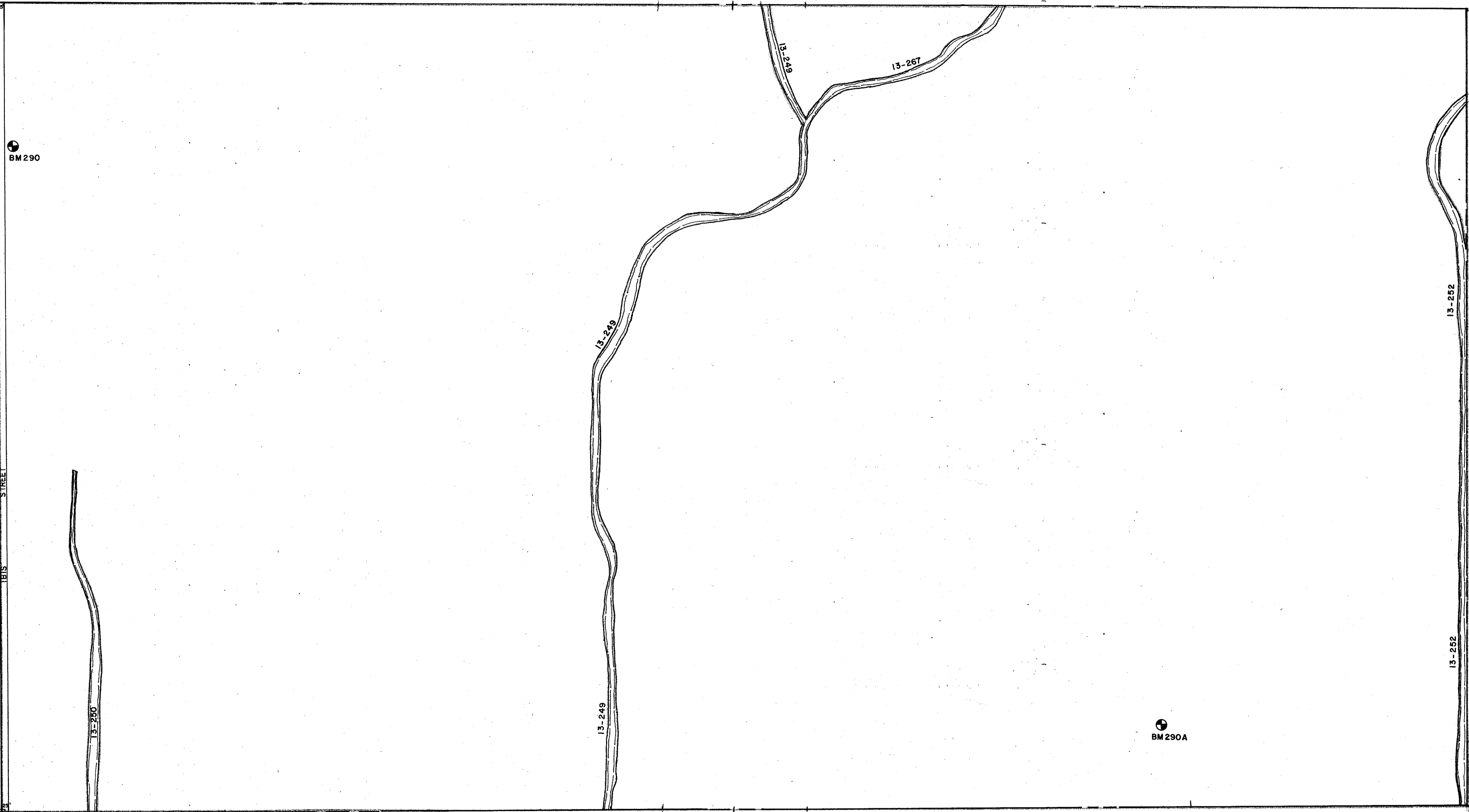


N 1/2 20-37-19 SHT. NO. 289

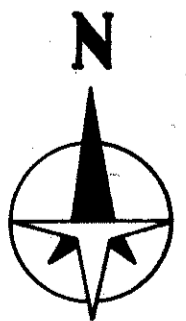


S 1/2 19-37-19 SHT. NO. 288

S 1/2 21-37-19 SHT. NO. 292

SEC. COR. 488

N 1/2 29-37-19 SHT. NO. 307



LEGEND:

- ▣ County Section Corner Monument
- ⊕ County Bench Mark
- Permanent Ref. Mon. for Subs.
- ① Subdivision Index Number

REVISIONS	
DATE	DESCRIPTION
OCT. 1987	ADDED DRAINAGE DITCHES & NUMBERS
JULY 1990	CHANGED IBI'S AVE. TO IBI'S STREET

SARASOTA COUNTY, FLORIDA

Scale: 1" = 200' Date: Drawn By:

S 1/2 SECTION 20  
TWP. 37 S.- RNG. 19 E.

Sheet No.

290