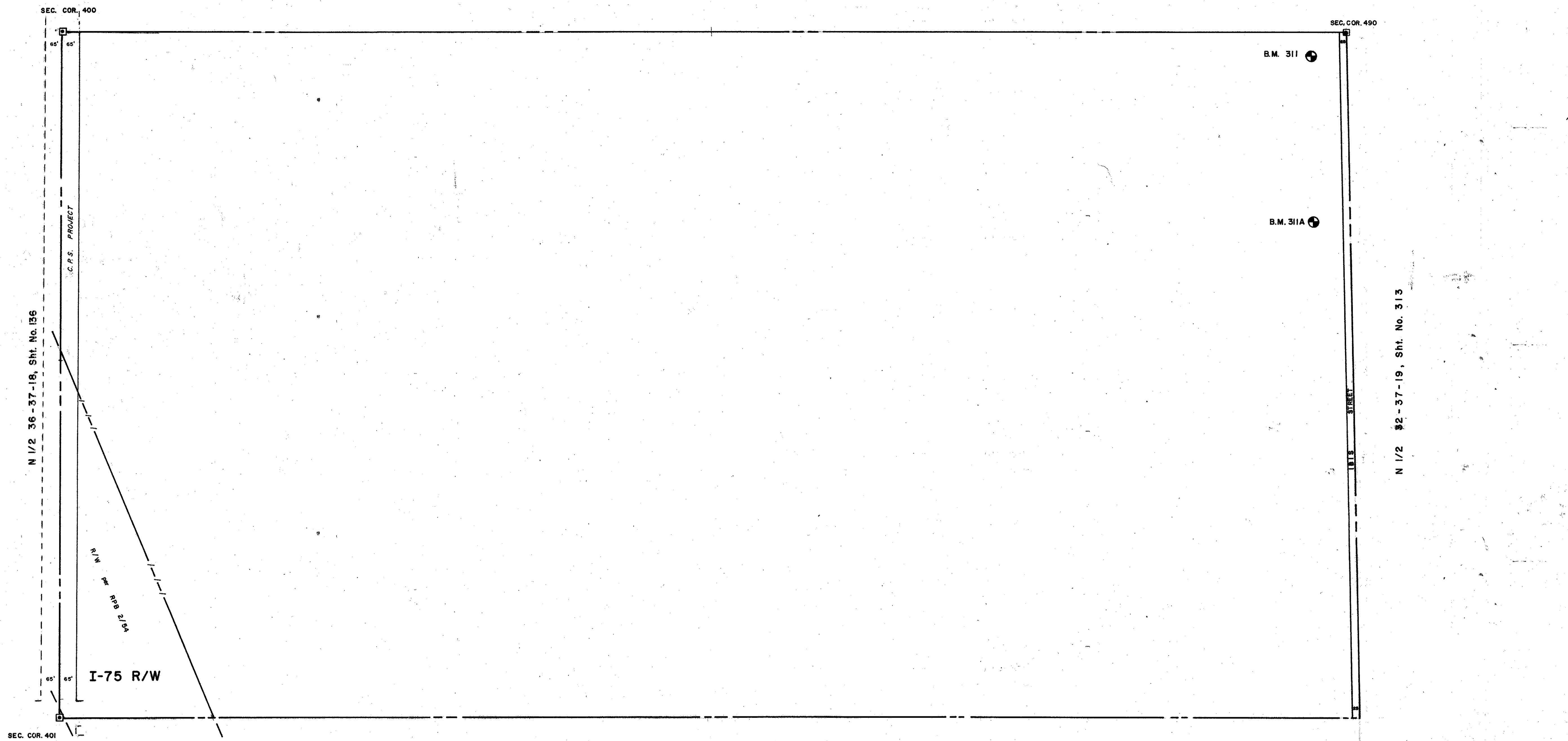
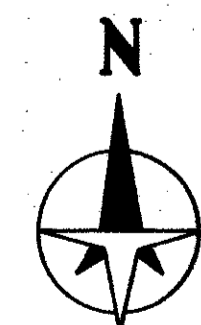


S 1/2 30-37-19, Shf. No. 310



S 1/2 31-37-19, Shf. No. 312



LEGEND:

- County Section Corner Monument
- ⊕ County Bench Mark
- Permanent Ref. Mon. for Subs.
- ① Subdivision Index Number

REVISIONS	
DATE	DESCRIPTION
FEB. 1978	COW PEN SLOUGH ADDED
FEB. 1978	ADDED I-75 (State Road Map)
JAN. 1979	1815 AVENUE R/W per OR 02,455
JUN. 1989	ADDED SECTION CORNER NUMBERS
AUG. 1990	ADDED B.M. 311 & 311A
	CHANGED 1815 AVE. TO 1815 STREET

SARASOTA COUNTY, FLORIDA
 Scale: 1" = 200' Date: Dec., 1973
 Drawn By: _____

**N. 1/2 Section 31
 Twp. 37 S.- Rge. 19 E.**

Sheet No.
311

BRUNING 44-511 16772