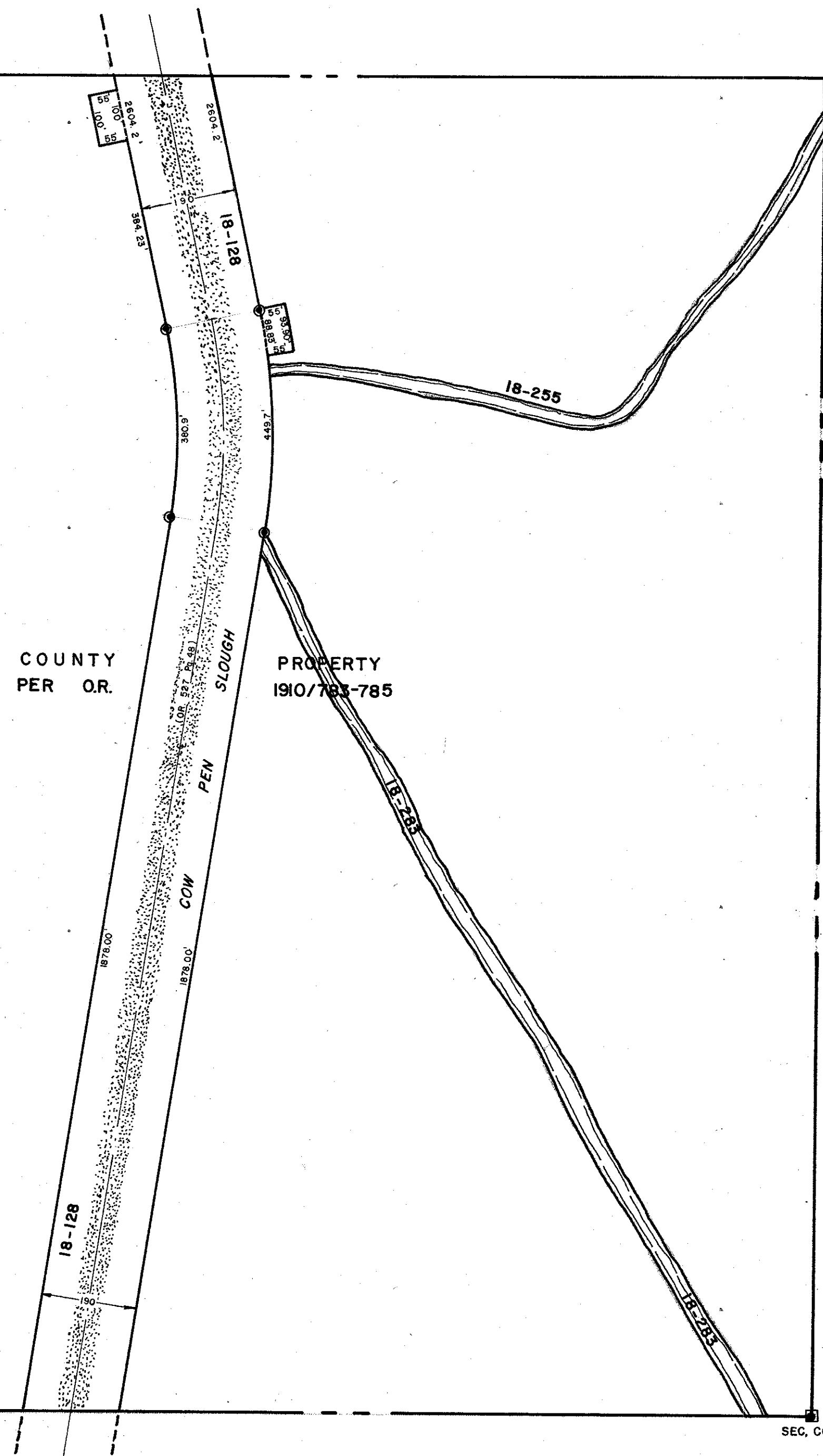


N. 1/2 9 - 38 - 18, Sht. No. 339

S. 1/2 8 - 38 - 18, Sht. No. 338

S. 1/2 10 - 38 - 18, Sht. No. 342

R.P. 90-20
App'd 5-14-91



SEC. COR. 593

N. 1/2 16 - 38 - 18 Sht. No. 353

SEC. COR. 697

LEGEND:

- County Section Corner Monument
- ⊕ County Bench Mark
- Permanent Ref. Mon. for Subs.
- ① Subdivision Index Number
- ▬ Drainage

REVISIONS	
DATE	DESCRIPTION
JAN 1987	COUNTY PROP. PER O.R. 1910/783-785, BY WARR. DEED
NOV 1987	ADDED DRAINAGE DITCHES & NUMBERS

SARASOTA COUNTY, FLORIDA

Scale: 1" = 200' Date: April, 1975

S. 1/2 Section 9
Twp. 38 S. Rng. 19 E.

Sheet No.

340

BRUNING 44-511 16772