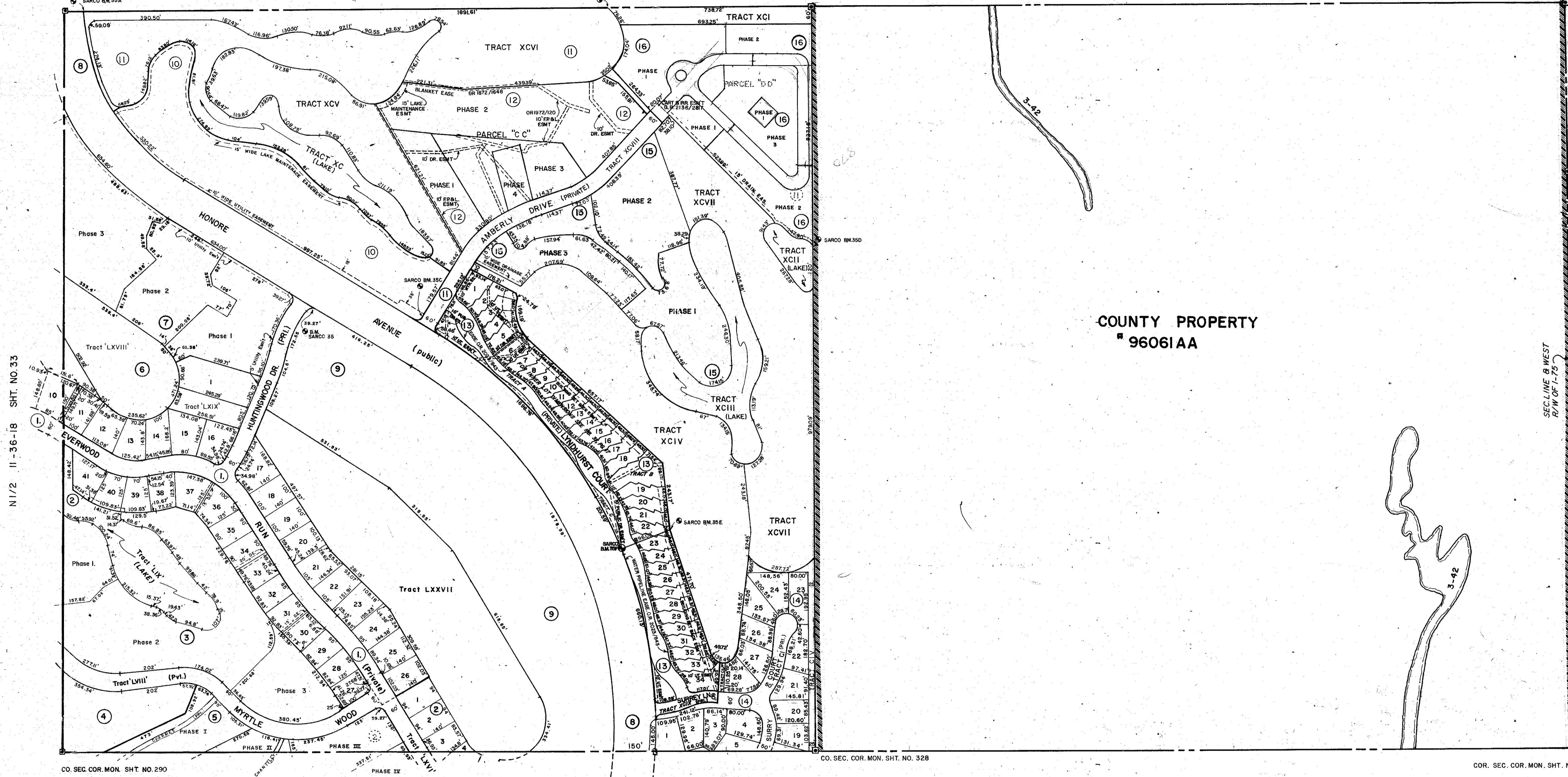


COUNTY PROPERTY  
# 96061AA

SECTION 8 WEST  
R/W OF 1-75



**SUBDIVISION INDEX**

NO.	NAME
1.	THE MEADOWS, Unit 6 PB 27/8-8B
2.	THE MEADOWS, Unit 7 PB 27/15-15C
3.	SPRINGLAKE, Condo., C.B. 16/16, 17/35
4.	SOMERSET, Condo. C.B. 16/36
5.	CHAMBERY C.B. 17/18
6.	THE MEADOWS, Unit 8 PB. 28/41-41B
7.	HUNTINGWOOD, C.B. 19/5
8.	THE MEADOWS, UNIT 10, PB 29/34
9.	CHANTECLAIRE C.B. 22/26
10.	WEYBRIDGE, Condo, C.B. 24/31-31C
11.	THE MEADOWS, UNIT 12, PB 30/30-30C
12.	KINGSMERE, C.B. 25/46-46D
13.	THE MEADOWS, UNIT 13, PB. 31/17-17E
14.	THE MEADOWS, UNIT 14, PB. 31/29A
15.	LONG COMMON, Condo. C.B. 27/18 A-6
16.	SHEFFIELD GREENE, Condo C.B. 28/24, & C.B. 29/28, C.B. 29/34, C.B. 29/39, C.B. 29/40 C.B. 29/44

**LEGEND:**

- ☐ County Section Corner Monument (NEW MON)
- ⊙ County Bench Mark
- Permanent Ref. Mon. for Subs.
- ① Subdivision Index Number

DATE	DESCRIPTION	BY
SEPT 1989	ADDED CART PATH & IRRIGATION EASEMENT, P. OR 2136/2817	KLP
JULY 1988	ADD LONG COMMON, Condo. C.B. 27/18 A-6	TSC
MAY 1989	WATER PIPELINE EASEMENT, OR 2025/2843	PER
NOV 1987	ADDED CHAMBERY UNIT 8, P. OR 1829/661	PER
JULY 1987	NEWBURG RD - HONORE AVE. OR 1089/661	PER
NOV 1988	THE MEADOWS UNIT 14, P.B. 31/29B	PER
AUG 1988	THE MEADOWS UNIT 13, P.B. 31/17	PER
JUNE 1988	KINGSMERE, CONDO, P.B. C.B. 25/46	PER
AUG 1988	THE MEADOWS UNIT 12, P.B. 30/30-30C	PER
AUG 1988	WEYBRIDGE, CONDO, P.B. C.B. 24/31-31C	PER
MAY 1989	ADDED PRIVATE ROAD NEMOS TO CONDO, CHAMBERY	PER
JUL 1982	ADDED THE MEADOWS UNIT 8	PER
MAY 1982	RUNTINGWOOD CONDO	PER
MAY 1982	ADDED THE MEADOWS UNIT 10	PER

**SARASOTA COUNTY, FLORIDA**

Scale: 1" = 200' Date: September 1977  
Drawn By: G.W. ACKERMAN

N 1/2 SECTION 12  
TWP. 36 S. RGE. 18 E.

Sheet No.

35



BRUNING 44-511 16772