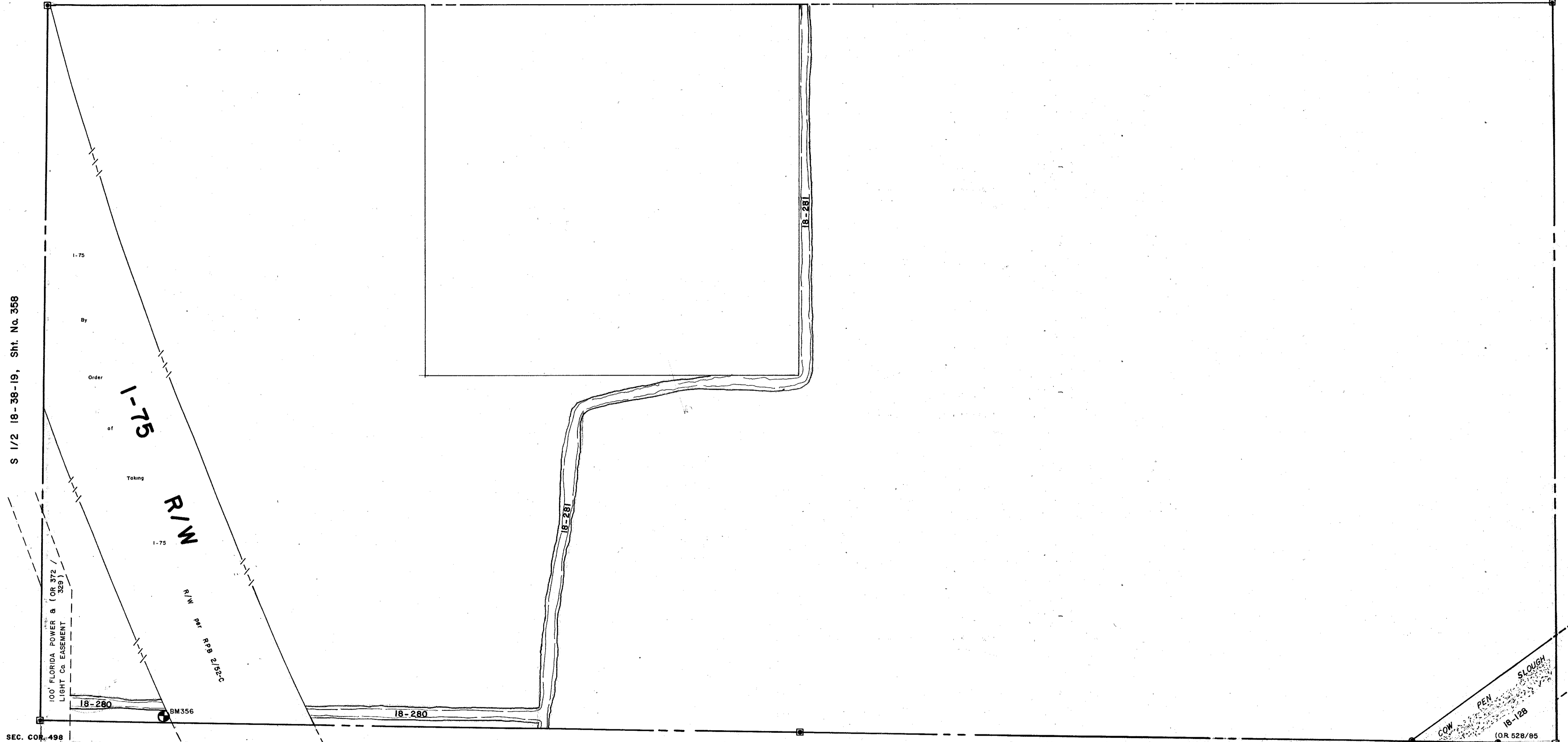


SEC. COR. 497

SEC. COR. 594

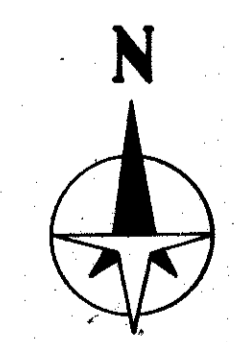
S 1/2 18-38-19, Sht. No. 358

S 1/2 16-38-19, Sht. No. 354



SEC. COR. 546  
N 1/2 20-38-19, Sht. No. 361

SEC. COR. 595



LEGEND:

- County Section Corner Monument
- Permanent Reference Monument
- Permanent Ref. Mon. for Subs.
- Ⓛ Subdivision Index Number
- Drainage

REVISIONS	
DATE	DESCRIPTION
April 1975	Revised, COW PEN SLOUGH, (OR 528 PG 85)
Aug 1975	South Sec. Line
MARCH 1977	1-75, by Order of Taking
FEB. 1978	F.P. & L. Co. EASE
SEP. 1982	SECTION CORNERS - DNR'd
FEB 1989	ADDED 18-280 & 18-281 OR ON COW PEN SLOUGH
NOV 1987	ADDED DRAINAGE DITCHES & NUMBERS

SARASOTA COUNTY, FLORIDA

Scale: 1" = 200' Date: DEC. 1973  
Drawn By: J.L.D.

S. 1/2 Section 17  
Twp. 38 S. - Rge. 19 E.

Sheet No.

356