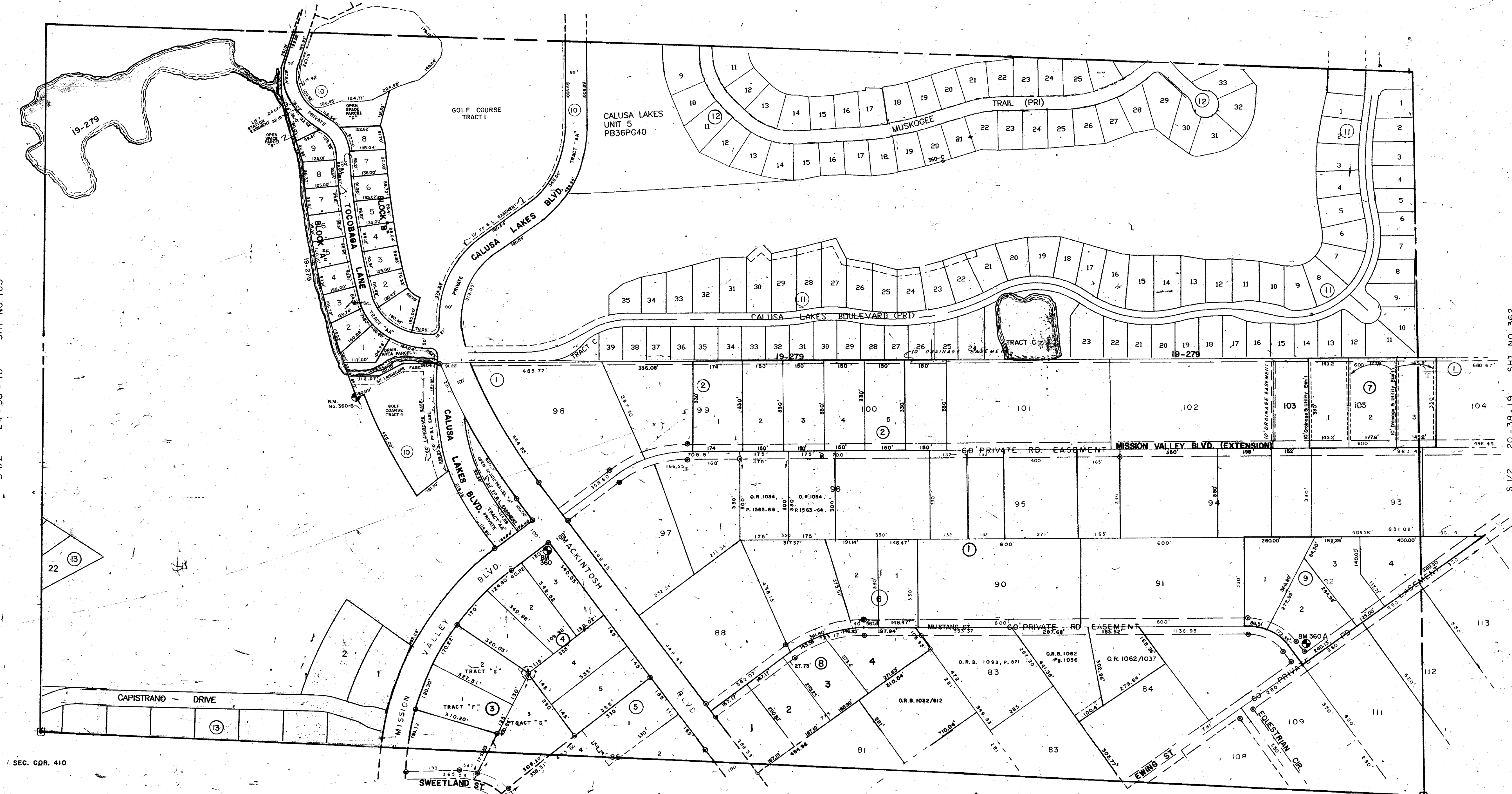


S 1/2 24 - 38 - 18 SHT. NO. 163

S 1/2 20 - 38 - 19 SHT NO. 362



11 CALUSA LAKES UNITS PB 40/22
 12 " " " " UNITS PB 36/40
 13 MISSION ESTATES UNIT I PB 39/6

SEC. COR. 500

SUBDIVISION INDEX

- | No. | Name |
|-----|---|
| 1 | MISSION VALLEY ESTATES, SECTION B-1 13/7,7A,7B |
| 2 | PEARSON'S SUBDIVISION, 22/5 |
| 3 | A RESUB. OF A PART OF LOTS 87 & 86-MISSION VALLEY ESTATES, Sec. B-1 |
| 4 | HORWATH'S REPLAT OF A PART LOTS " " " " |
| 5 | CANTRELL SUBDIVISION, A Sub. Of Lot 85, Sec. B-1, Mission Valley Est. |
| 6 | ABBETT SUBDIVISION, A Sub. Of The E. 1/2 Of Lot 89, Sec. B-1, Mission Valley Est. |
| 7 | MARDON ESTATES, A Sub. of a part of Lot 103, Sec. B-1, Mission Valley Est. |
| 8 | DIEGEL SUBDIVISION, Tract 82, Mission Valley Est. Sec. B-1 |
| 9 | RUDON ACRES, PB 34/14 |
| 10 | CALUSA LAKES, UNIT I, PB 35/7-71 |

- 23/18
 23/40
 24/29
 28/36
 28/40
- LEGEND**
- Section Corner Monument
 - ⊙ Permanent Reference Monument
 - Reference Point for Subdivisions
 - ① Subdivisions Index Number
 - Drainage

DATE	DESCRIPTION	BY
MAY 1951	ADDED CALUSA LAKES UNIT I, PB 35/7-71	W.C. BROWN
MAY 1950	ADDED RUDON ACRES, PB 34/14	W.C. BROWN
FEB 1949	ADDED DRAINAGE DITCH & NUMBERS	W.C. BROWN
JULY 1948	CORRECTED SECTION LINES	W.C. BROWN
JULY 1947	Revised East Boundary	W.C. BROWN
JUN 1942	DIEGEL SUBDIVISION	W.C. BROWN
MAY 1942	MARDON ESTATES SUB.	W.C. BROWN
APR 1942	Revised MISSION VALLEY EST. Border	W.C. BROWN
JAN 1936	Revised Section Lines	W.C. BROWN
SEPT 1937	ABBETT SUBDIVISION	W.C. BROWN

SARASOTA COUNTY FLORIDA
 SCALE 1" = 200' MARCH 05

S 1/2 SECTION 19
 TWP. 38 S. RNG. 19 E.

SHT. NO.
 360

