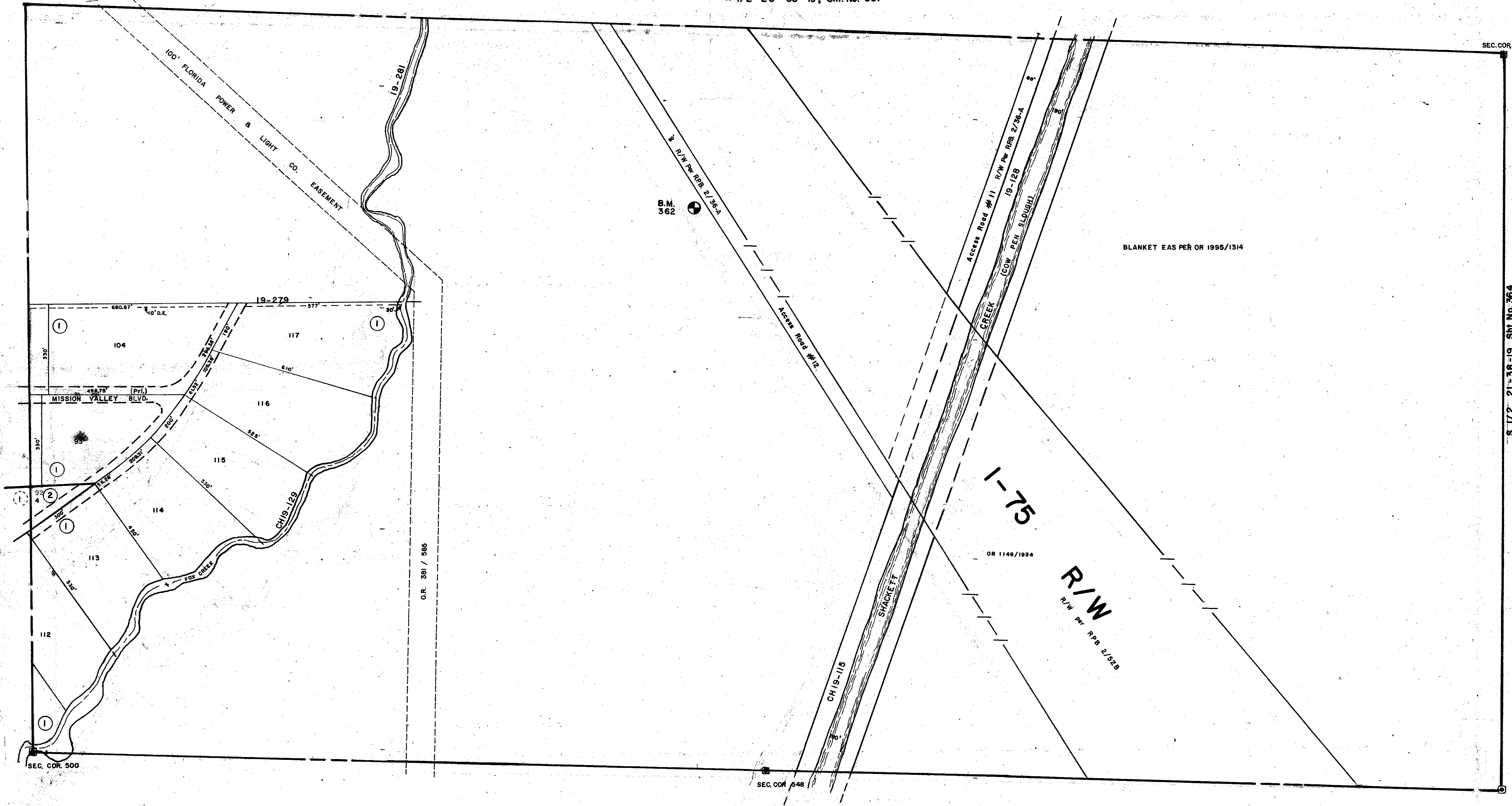


N 1/2 20-38-19, Sht. No. 361

SEC. COR. 596

S 1/2 19-38-19, Sht. No. 360

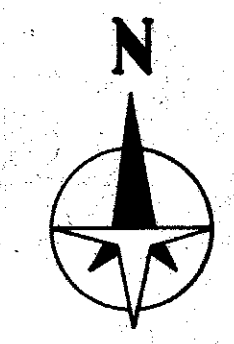
S 1/2 21-38-19, Sht. No. 364



**SUBDIVISION INDEX**  
 1. Mission Valley Estates, Sec. B-1, 13/7B  
 2. RUDON ACRES, PB 34/14

N 1/2 29-38-19, Sht. No. 379

SEC. COR. 597



- LEGEND**
- D.O.T. Limited Access R/W
  - ⊕ County Section Corner Monument
  - ⊙ County Bench Mark
  - Permanent Ref. Mon.
  - ① Subdivision Index Number

DATE	DESCRIPTION	BY
SEP. 1981	Added OR number for C.P.S. R/W	JHY
JAN. 1982	Revised Section Lines	JHY
MAY 1982	MISSION ESTATES Sub - Removed in JUNE '82	KLH
JUN. 1983	Revised 1-75 & COW PER SLOUGH (SHACKETT CREEK)	KLH
JAN. 1985	Added D.O.T. Limited Access - 1-75 R/W	KLH
MAY 1985	CONNECTED SECTION LINES	KLH
FEB. 1987	ADDED DRAINAGE DITCH NUMBERS	KLH
NOV. 1987	ADDED DRAINAGE DITCH NUMBERS	KLH
DEC 1988	BLANKET UTIL EAS PER OR 1995/1314	RJJ
MAY 1990	ADDED RUDON ACRES, PB 34/14	KLH
MAY 1990	ADDED OR 381/588	KLH

**SARASOTA COUNTY, FLORIDA**  
 Scale: 1" = 200' Date: May, 1977

**S. 1/2 Section 20  
 Twp. 38 S.- Rge. 19 E.**

Sheet No.  
**362**

BRUNING 44-511 19772