

S 1/2 12-36-18 SHT. NO. 36

CO. SEC. COR. MON. SHT. NO. 374

CO. SEC. COR. MON. SHT. NO. 329

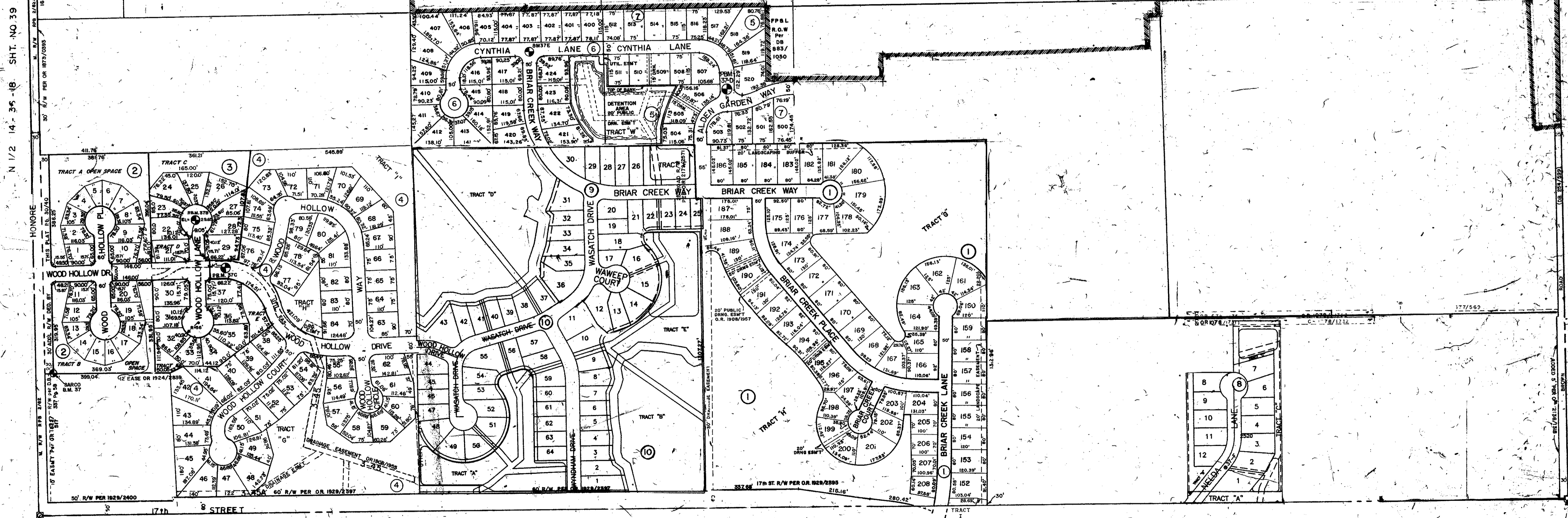
CO. SEC. COR. MON. SHT. NO. 292

S 1/2 7-36-19 SHT. NO. 192

COUNTY PROPERTY 96061AA

CO. SEC. COR. MON. SHT. NO. 375

FLORIDA DB 344/353 POWER DB 346/510 LIGHT CO. R.O.W.



N 1/2 14-36-18 SHT. NO. 39

N 1/2 18-36-19 SHT. NO. 213

CO. SEC. COR. MON. SHT. NO. 292

CO. SEC. COR. MON. SHT. NO. 376

S 1/2 13-36-18 SHT. NO. 38

SUBDIVISION INDEX

- 1 DEER HOLLOW, UNIT II PB. 30/26-26E
- 2 THE WOODS, UNIT I PB. 30/40-40A
- 3 THE WOODS, UNIT II PB. 31/38-38B
- 4 THE WOODS, UNIT III PB. 32/17-17D
- 5 DEER HOLLOW, UNIT V PB. 35/49-49C
- 6 DEER HOLLOW, UNIT VI PB. 34/3
- 7 SWARTZ SUB PB. 34/20-20C
- 8 WYNDHAM UNIT I PB. 36/4
- 9 WYNDHAM UNIT II PB. 38/47
- 10 WYNDHAM UNIT III PB. 39/17

- #### LEGEND
- Section Corner Monument (NEW NUMBERS)
 - Permanent Reference Monument
 - Reference Point Subdivisions
 - ① Subdivision / Index Number
 - Drainage
 - ⊙ County Bench Mark

DATE	ALTERATIONS	DESCRIPTION
APR 1987	THE WOODS UNIT III PB 32/17	ADDED 10' EASEMENT ON 1929/2355
APR 1987	THE WOODS UNIT III PB 32/17	ADDED 10' EASEMENT ON 1929/2355
MAR 1987	17th ST. R/W PER OR. 1929/2355-2400	
JAN 1987	ADDED THE WOODS UNIT 2, PB 31/38-38B	
JUN 1986	ADDED THE WOODS UNIT 3, PB 32/17-17D	
JUL 1986	ADDED THE WOODS UNIT 4, PB 35/49-49C	
DEC 1985	ADDED THE WOODS UNIT 5, PB 34/3	
NOV 1985	CORRECTED NEWBURN ROAD PER OR. 2/82	
JUN 1985	ADDED DEER HOLLOW UNIT V, PB 35/49-49C	
JUN 1985	ADDED DEER HOLLOW UNIT VI, PB 34/3	
FEB 2004	REMOVED SPITE	

SARASOTA COUNTY, FLORIDA.
SCALE 1" = 200' MAY 1964

N 1/2 SECTION 13
TWP 36 S. RNG 18 E.



SHT. NO.
37