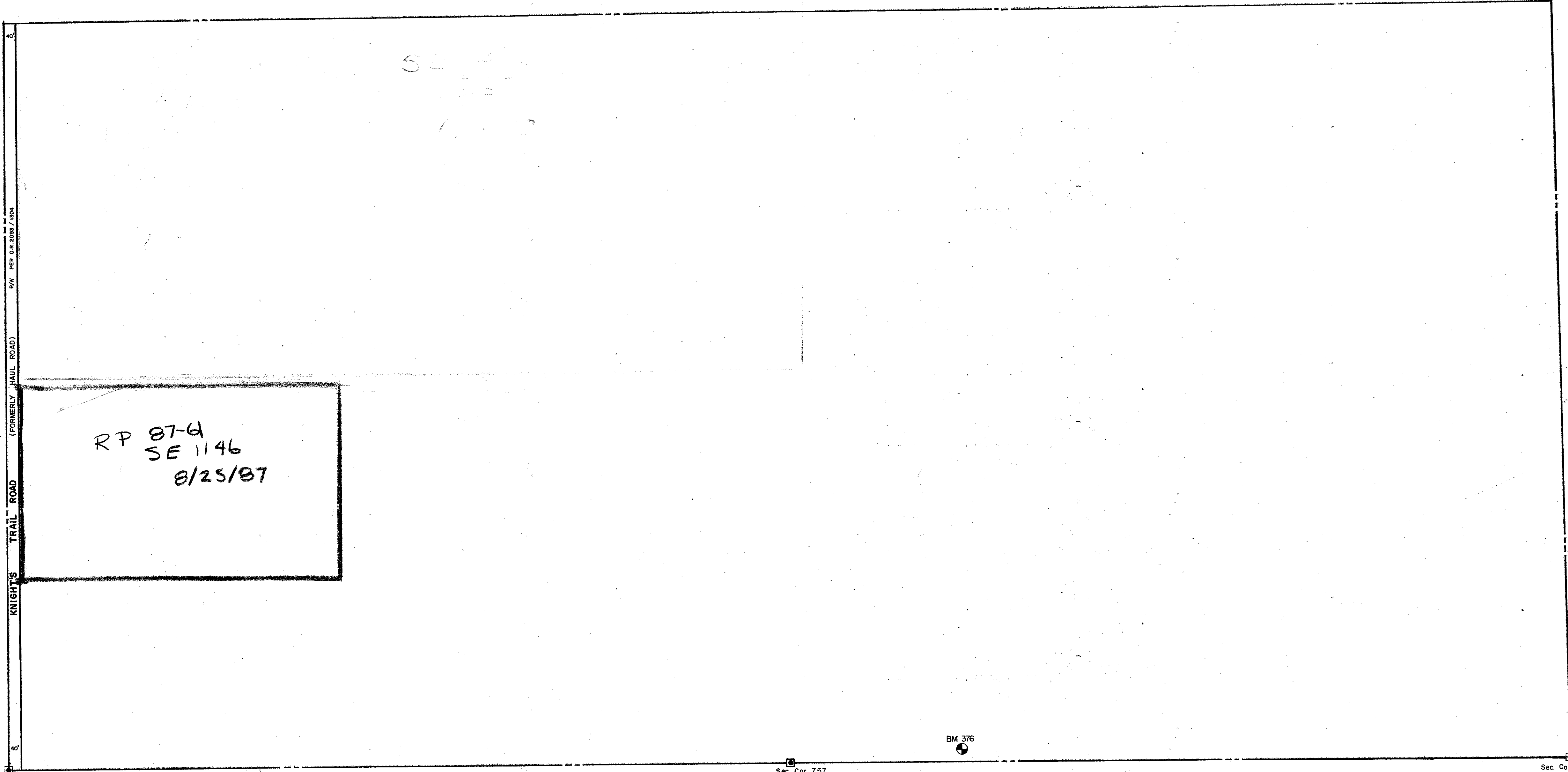


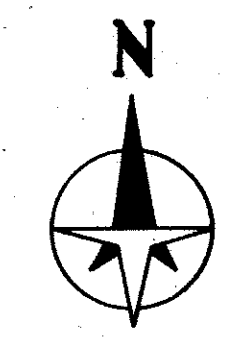
N1/2 27-38-19 SHT. NO. 375



S1/2 28-38-19 SHT. NO. 378

S 1/2 26-38-19 SHT. NO. 374

N1/2 34-38-19 SHT. NO. 389



- LEGEND:**
- ▣ County Section Corner Monument
 - ⊠ County Bench Mark
 - Permanent Ref. Mon. for Subs.
 - ① Subdivision Index Number

REVISIONS	
DATE	DESCRIPTION
PER 1992	ADDED R/W PER O.R. 2093/1304, KNIGHT'S TRAIL ROAD YAM

SARASOTA COUNTY, FLORIDA

Scale: 1" = 200' Date: MAY 1987

Drawn By: PAR

S 1/2 SECTION 27
TWP. 38 S. RNG. 19 E.

Sheet No.
376