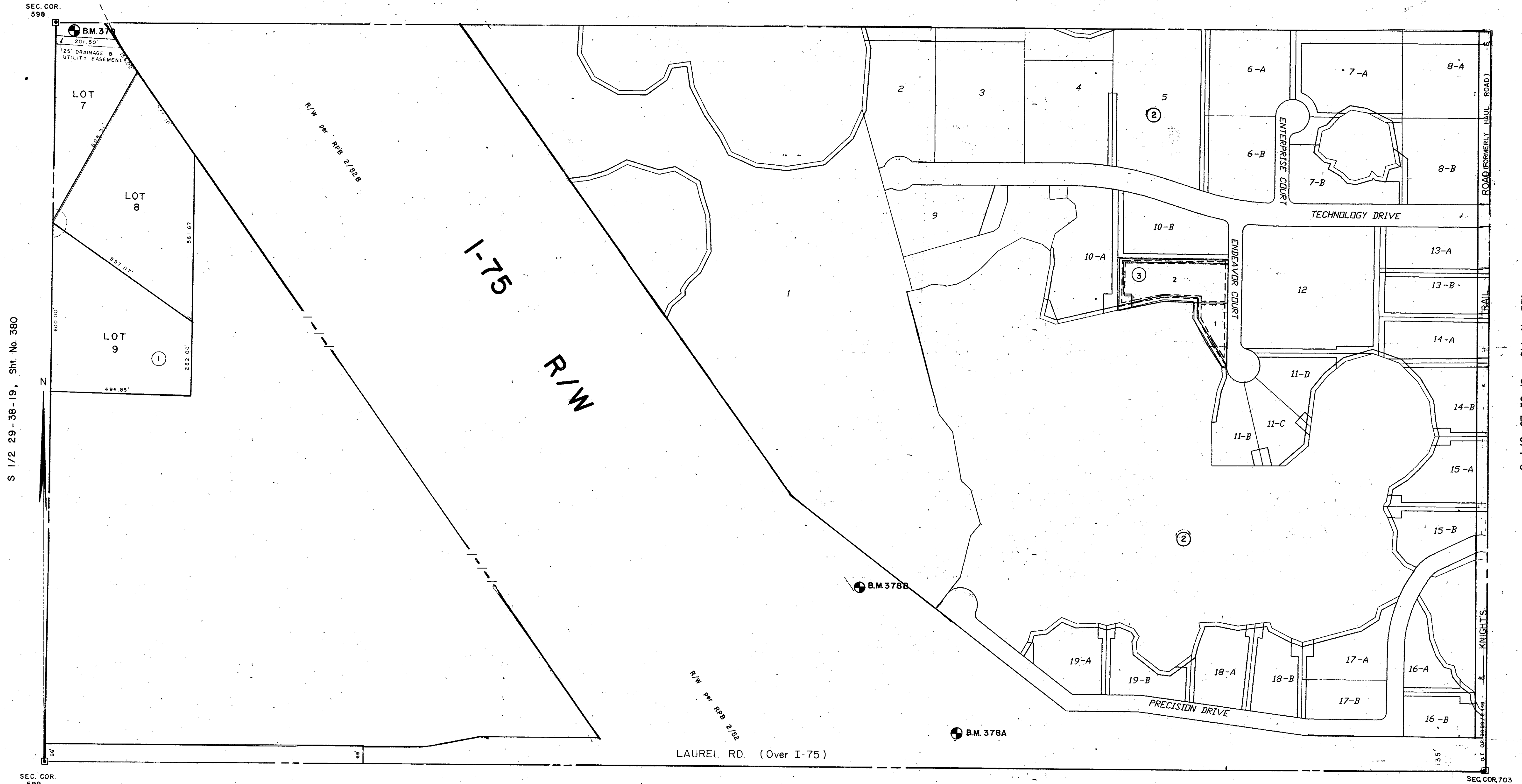


N 1/2 28-38-19, Sht. No. 377



S 1/2 29-38-19, Sht. No. 380

S 1/2 27-38-19, Sht. No. 376

N 1/2 33-38-19, Sht. No. 387

SUBDIVISION INDEX

No.	NAME
1	TWIN LAUREL ESTATES 24/43
2	LAUREL INTERCHANGE BUSINESS CENTER PB 37/16
3	LAUREL INTERCHANGE BUSINESS CENTER PB 39 PG 18

LEGEND

- D.O.T. Limited Access R/W
- County Section Corner Monument
- County Bench Mark
- Permanent Ref. Mon. for Subs.
- Subdivision Index Number

DATE	DESCRIPTION	J.S.D.
FEB. 1978	ADDED TWIN LAUREL ESTATES 24/43	J.M.Y.
APR. 1982	1-75	K.L.H.
JAN. 1985	ADDED D.O.T. Limited Access I-75 R/W - Accesses to Access Road 10	P.J.B.
JUNE 1986	30' PUBLIC ACCESS, DRAINAGE & UTILITY ESM'T Pw OR 1849/0510	C.M.C.
FEB. 1987	ADDED B.M. 378 & 378A & 378B	K.L.P.
JULY 1989	NAME CHANGE, HAUL ROAD TO KNIGHT'S TRAIL ROAD, O.R. 2141/934	R.J.J.
FEB. 1990	ADDED LAUREL ROAD R/W	K.M.
FEB. 1992	ADDED O.T. O.R. 2089/2446, KNIGHT'S TRAIL ROAD	

SARASOTA COUNTY, FLORIDA

Scale: 1" = 200' Date: DEC. 1973

**S. 1/2 Section 28
Twp. 38 S. - Rge. 19 E.**

Sheet No.

378

