

S. 1/2 20 - 38 - 19, Sht. No. 362

SEC. COR. 597

BLANKET UTIL EAS PER OR 1995/1314

I-75 R/W  
R/W per RPB 2/52 B

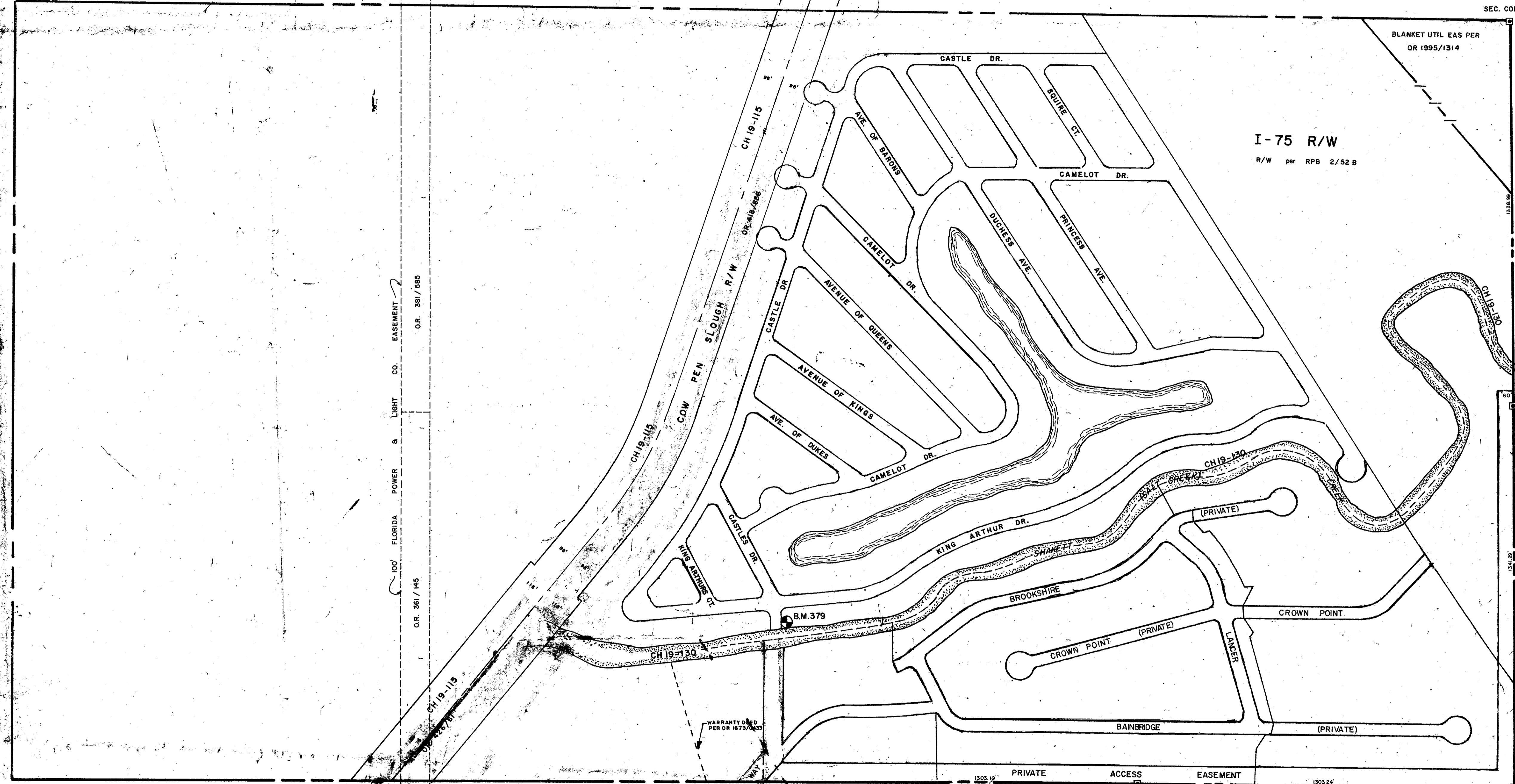
N. 1/2 28 - 38 - 19, Sht. No. 377

SEC. COR. 598

S. 1/2 29 - 38 - 19, Sht. No. 380

N. 1/2 30 - 38 - 19, Sht. No. 381

100' FLORIDA POWER & LIGHT CO. EASEMENT  
OR. 381/585  
OR. 381/145



SUBDIVISION INDEX  
I. King's Gate CB 5/47-47A, CB 6/41

- LEGEND**
- D.O.T. Limited Access R/W
  - County Section Corner Monument
  - Permanent Reference Monument
  - Permanent Ref. Mon. for Subs.
  - ① Subdivision Index Number
  - Drainage

DATE	REVISIONS	DESCRIPTION
SEP. 1981	Added GR. numbers for C.P.S. R/W	
JUN. 1983	Revised Section Line	
DEC. 1984	FPBL Easement per OR 381/145	
FEB. 1987	ADDED DRAINAGE NUMBERS	
DEC. 1988	BLANKET UTIL EAS PER OR 1995/1314	
JULY 1991	WARRANTY DEED	
JAN. 1992	ADDED OR 381/145	
AUG. 1992	KING'S WAY DR.	

**SARASOTA COUNTY, FLORIDA**

Scale: 1" = 200' Date: July 1975  
Redrawn By: S.K.B.

N. 1/2 Section 29  
Twp. 38 S.- Rge. 19 E.

Sheet No.  
379



DRAWING 44-511 16772