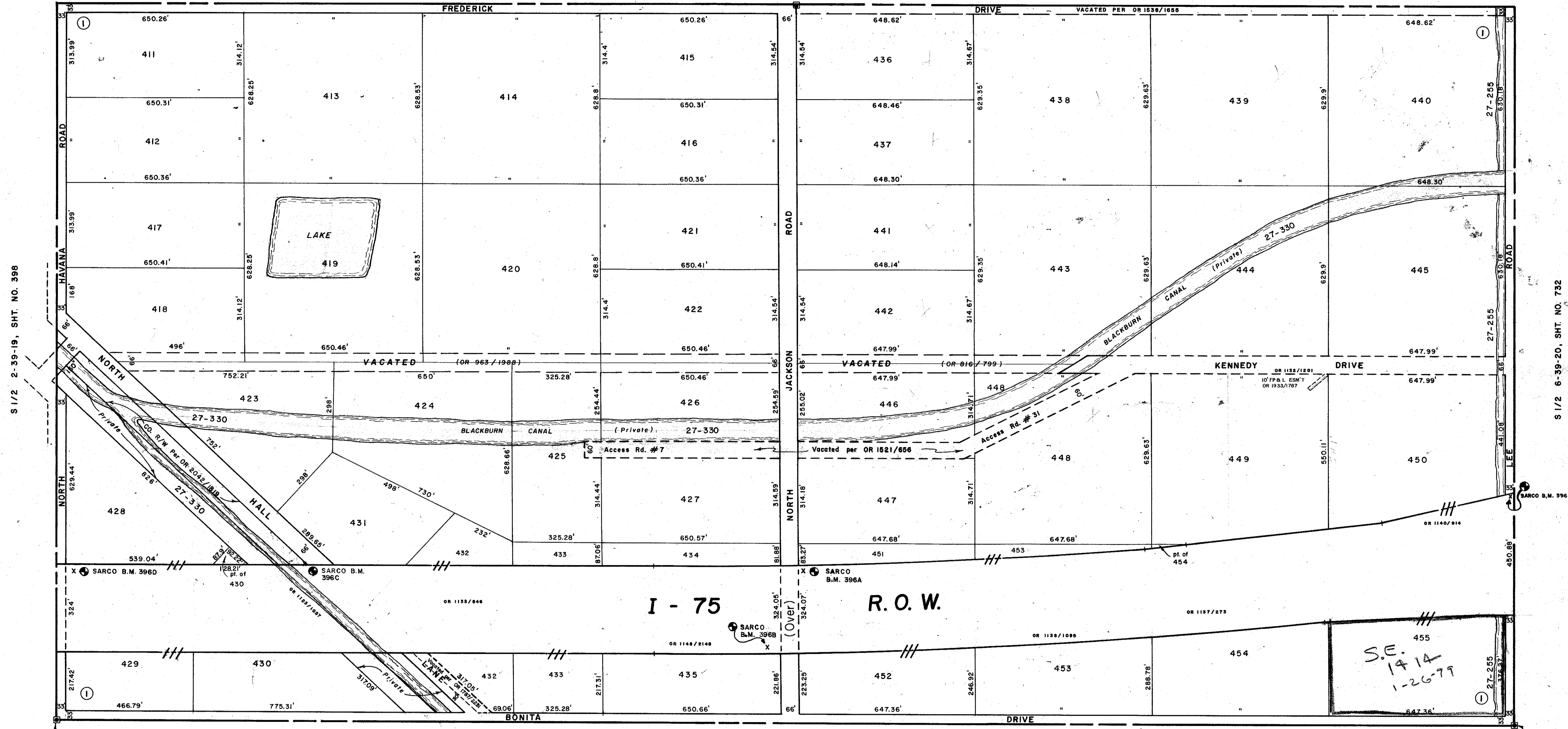


SEC. COR 969



S 1/2 2-39-19, SHT. NO. 396

S 1/2 6-39-20, SHT. NO. 732

CO. SEC. COR. MON. SHT. No. 933

CO. SEC. COR. MON. SHT. No. 1053

**SUBDIVISION INDEX**

No.	Name
I.	NORTH VENICE FARMS 2 / 203

**LEGEND**

- D.O.T. Limited Access R/W
- ⊠ County Section Corner Monument
- ⊙ County Bench Mark
- ⊕ Permanent Ref. Mon. for Subs.
- ① Subdivision Index Number

REVISIONS	
DATE	DESCRIPTION
FEB. 1982	Added O.R. Numbers in reference to I-75
JUN. 1982	Corrected SECTION CORNER Numbers
JUL. 1982	Vacated ACCESS ROADS No. 7 & 31 per OR 1821/656
OCT. 1982	Portion of FREDERICK DR. vacated per OR 1538/1655
JAN. 1983	Added D.O.T. Limited Access - I-75 R/W
JULY 1987	10' P.P. & L. EASEMENT OR 1936/787
DEC. 1987	ADDED DRAINAGE NUMBERS
JUNE 1988	CHANGED COUNTY PROP. TO 1/4"

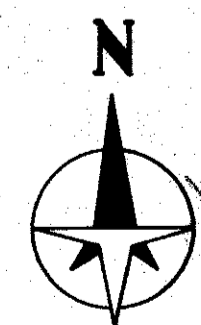
**SARASOTA COUNTY, FLORIDA**

Scale: 1" = 200' Date: April 24, 1978

**S 1/2 SECTION I  
TWP. 39 S. RGE. 19 E**

Sheet No.

**396**



BRUNING 44-511 16772