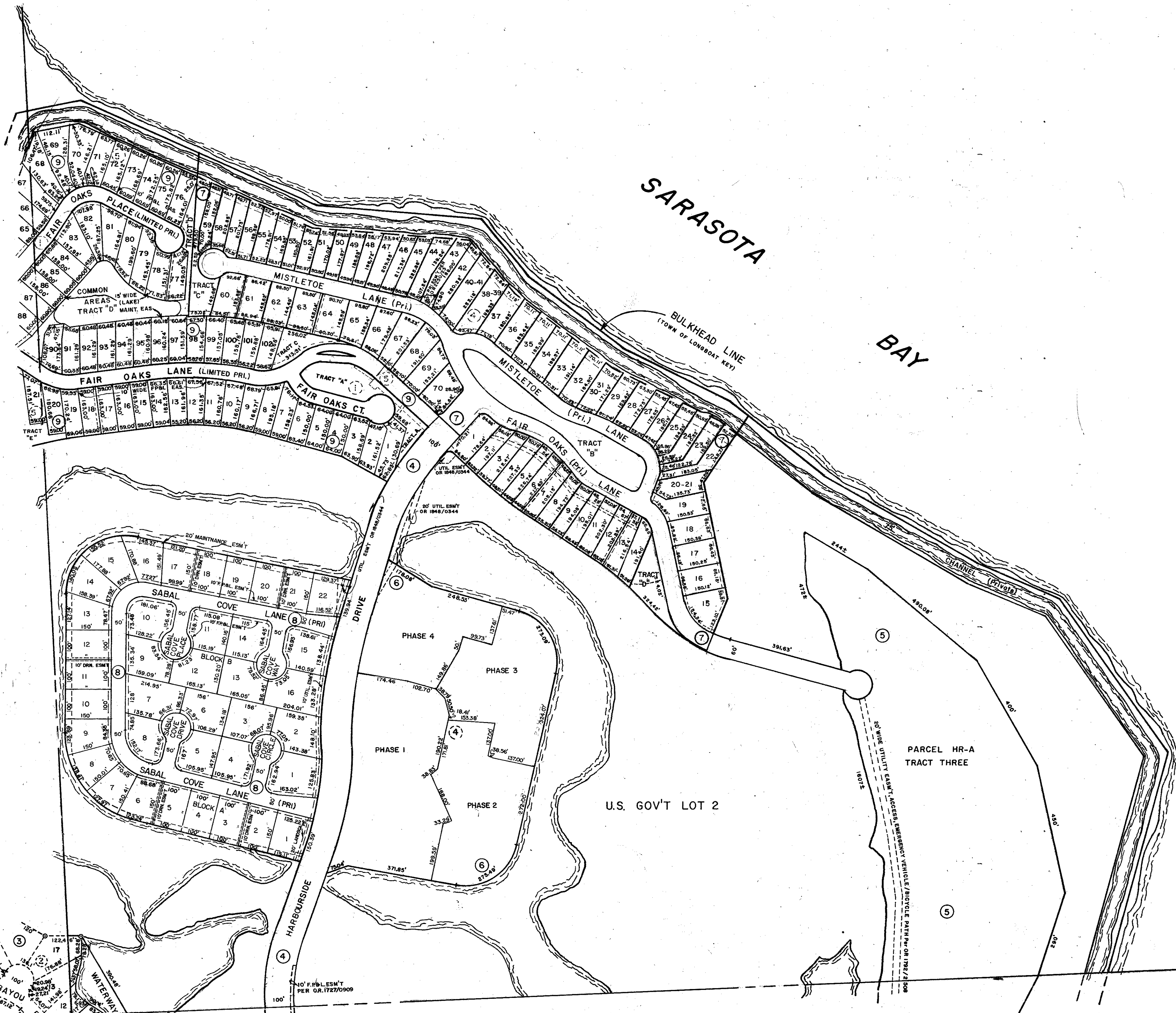
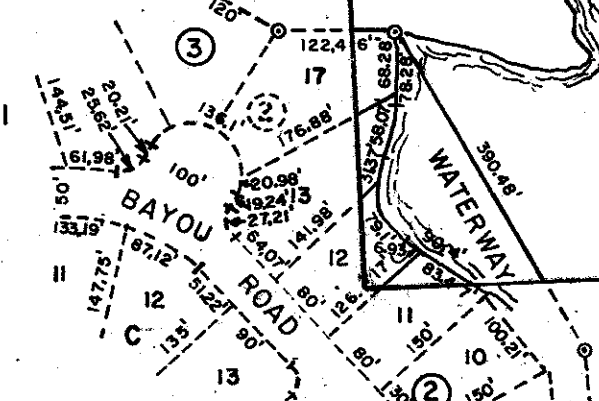


S 1/2 5-36-17 SHT. NO 362



**SUBDIVISION INDEX**

NO.	NAME	PLAT
1	COREY'S PLAT	A/14 (1/320 Manatee Co. No.)
2	BAY ISLES, Unit 2	PB 24/5-5C
3	BAY ISLES, Unit 7	PB 29/20
4	BAY ISLES, Unit 8	PB 29/21
5	BAY ISLES, Unit 6	PB 30/23
6	WINDING OAKS, a condo	CB 27/27-271
7	COREY'S LANDING	PB 33/11
8	SABAL COVE	PB 33/48-48C
9	MANCHESTER BAY	PB 33/47-47D



BULKHEAD INDEX  
A. 1/7

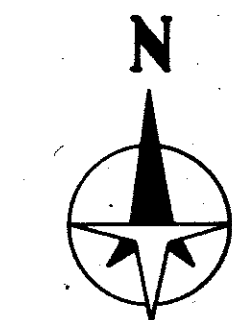
- LEGEND:**
- County Section Corner Monument
  - County Bench Mark
  - Permanent Ref. Mon. for Subs.
  - ① Subdivision Index Number

REVISIONS	
DATE	DESCRIPTION
JAN 1986	DRAWN
JULY 1986	Added Utility Easements per OR 1848/0344
MAY 1988	Added Prel. ESM's per O.R. 1727/0099
OCT 1988	Added WINDING OAKS, a Condo CB 27/27
MAY 1989	Added COREY'S LANDING PB 33/11
JAN 1990	Added SABAL COVE PB 33/48
FEB 1990	Added MANCHESTER BAY PB 33/47
JAN 1991	Added PRESM'T PER OR 2250/23

**SARASOTA COUNTY, FLORIDA**

Scale: 1" = 200' Date: JAN. 1986  
Drawn By: RJJ

SECTION 5  
TWP. 36 S. RGE. 17 E.



Sheet No.  
4

N 1/2 8-36-17 SHT. NO. 6