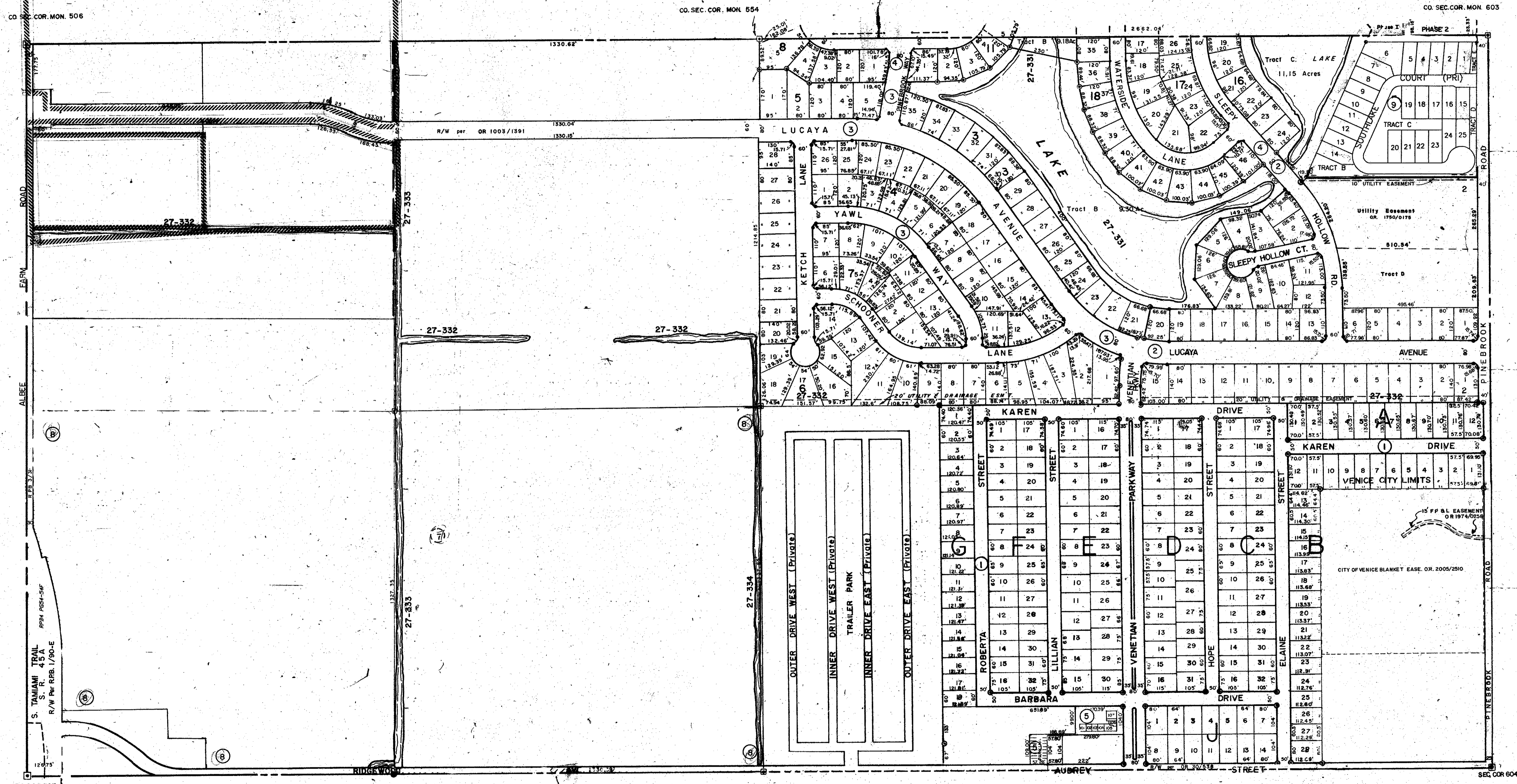


S 1/2 5-39-19 SHT. NO. 404



S 1/2 8-39-19 SHT. NO. 410

SUBDIVISION INDEX

NO.	Name
1.	EAST GATE TERRACE 10/100
2.	PINEBROOK SOUTH, Unit 1 23/25, 25-A
3.	PINEBROOK SOUTH, Unit 2 23/26, 26 A
4.	PINEBROOK SOUTH, Unit 3 23/48 - 48 E
5.	VENETIAN ARMS, A CONDO. SEC. ONE C.B. 14/25, A
6.	PINEBROOK LAKE CLUB, C.B. 19/17, 19/24, 24/40
7.	HOME PARK SECTION OF VENICE P.B. 2/218
8.	REPLAT OF HOME PARK SECTION OF VENICE P.B. 4/7
9.	LAKESIDE WOODS SOUTH PB37PG12

LEGEND

	Section Corner Monument
	Permanent Reference Mon.
	Venice City Limits
	Sub. Ref. Point
	Sub. Index Number
	Drainage

ALTERATIONS

DATE	DESCRIPTION
JAN 1990	ADDED RPB 3/31 ALBEE FARM
AUG 1989	PINEBROOK LAKE CLUB, Amended Plat, CA 24/40
DEC 1984	UNIT 3 REVISIONS PER OR 1722/551
OCT 1982	PINEBROOK LAKE CLUB, Amended Plat
SEP 1980	PINEBROOK LAKE CLUB, CONDO.
AUG 1988	REVISED VENICE CITY LIMITS
MAY 1982	CHANGED C.B. 14-25 TO SLEEPY HOLLOW CT., Venice Ord. 934-82
APR 1981	ADDED ST. R/W PER OR 30/838
JUL 1976	ADDED HOME PARK CONDOMINIUM SECTION ONE
JUL 1976	PINEBROOK SOUTH U.I.
JUN 1976	ADDED 60' ROAD, E 1/2 OF THE NW 1/4, OR 1003/1391
JUN 1975	CORRECTED ERRONEOUS 28' R/W NE 1/4, NE 1/4
JUN 1975	ADDED EAST GATE TERRACE
MAY 1984	REVISED
JUN 1985	REDRAWN & S.R. 45A ADDED
FEB 1986	REDRAWN & EAST GATE TERRACE REVISED
CT. 1987	TRAILER PARK ADDED
NOV 1988	EXTENDED VENICE CITY LIMITS.
FEB 1973	SPLITS & REVISIONS
JUN 1975	REVISED VENICE CITY LIMITS
DEC 1975	A44 PINEBROOK SOUTH, Unit 1
	Unit 2

SARASOTA COUNTY FLORIDA
SCALE 1" = 200
FEB. 1966

N 1/2 SECTION 8
TWP. 39 S. RNG. 19 E.

SHT. NO.
409

