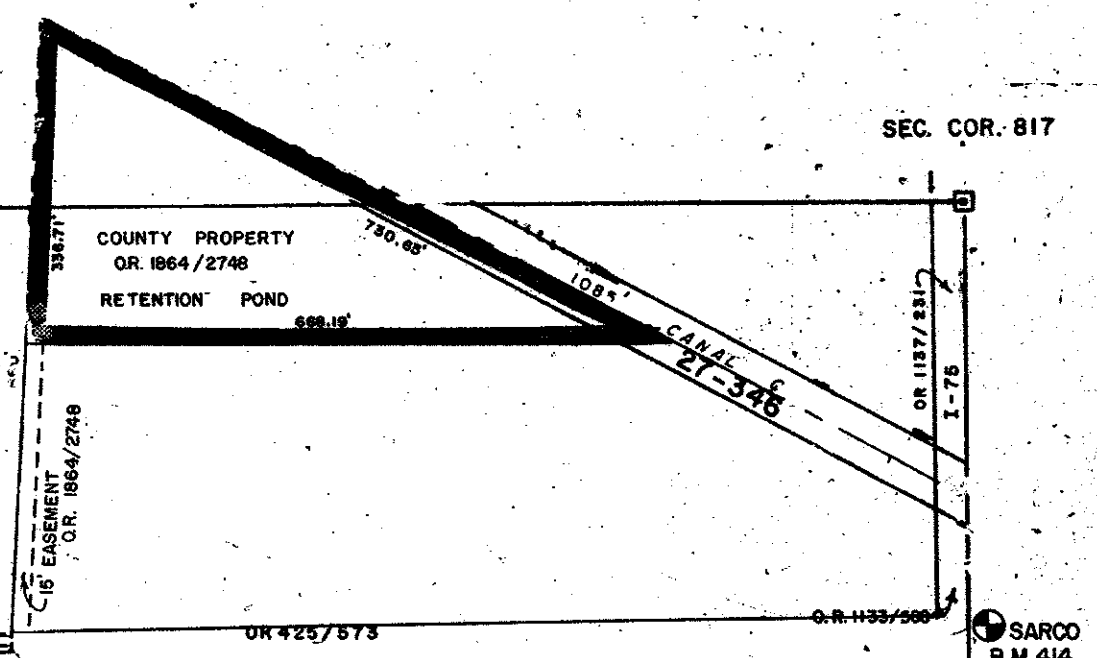
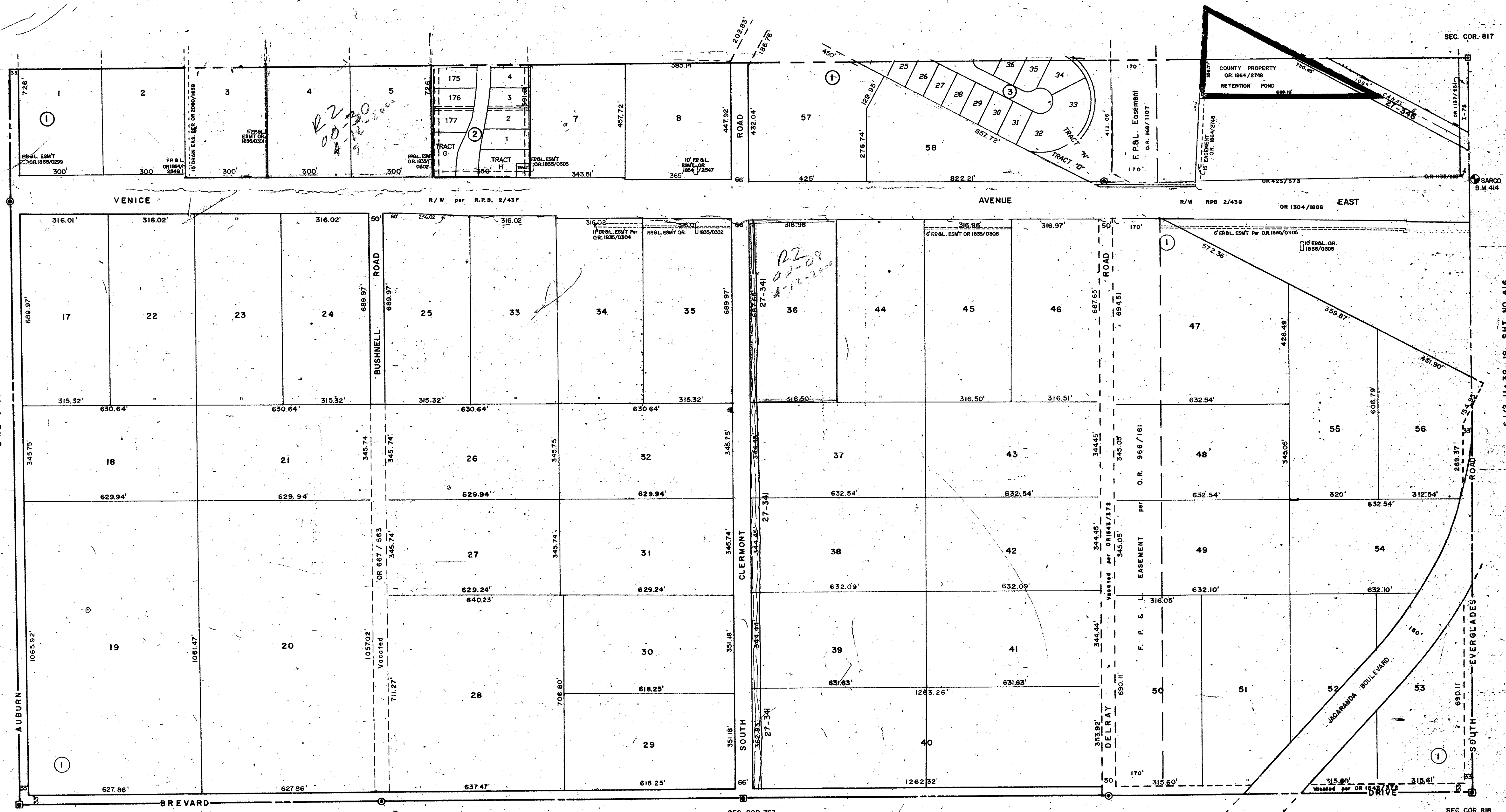


N 1/2 10-39-19 SHT. NO. 413



S 1/2 9-39-19 SHT. NO. 412

S 1/2 11-39-19 SHT. NO. 416

N 1/2 15-39-19 SHT. NO. 423

SUBDIVISION INDEX

No.	Name
1.	VENICE FARMS 2/179
2.	VENICE PALMS PHASE I PB 40/7
3.	VENICE PALMS PHASE 2 PB 41PG 44

LEGEND

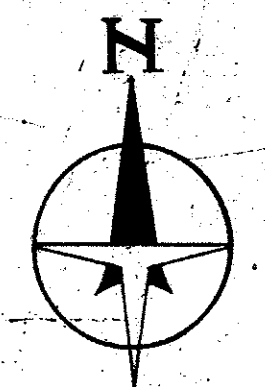
○	SARA. CO. BENCH MARK
●	PERM. REF. MON. (for Subs.)
○	CONC. MON.
○	IRON PIPE
○	CO. SEC. COR. MON. (NEW NOS.)

ALTERATIONS

DATE	DESCRIPTION
AUG. 1985	SPLITS & REVISIONS
MAY 1986	REVISION
DEC. 1987	SPLITS & REVISIONS
AUG. 1976	SEC. LINE & E.P. & L. CO. ESM'T.
OCT. 1976	O.R. 1137/231-2, L. 75, O.R. 1133/388
AUG. 1977	REVISED GLADEVIEW DRIVE
OCT. 1978	Vacated Part of Bushnell Rd. OR 667/563
OCT. 1980	F. P. & L. EASEMENT O.R. 966/181
MAR. 1988	Corrected N. EVERGLADES RD. 2-75 EASEMENT
OCT. 1983	VENICE AVE. R/W PER R.P.D. 2/43F
OCT. 1983	EVERGLADES JACARANDA CONSTRUCTOR PER OR 1641/180
OCT. 1983	EVERGLADES JACARANDA CONSTRUCTOR PER OR 1641/180
OCT. 1983	EVERGLADES JACARANDA CONSTRUCTOR PER OR 1641/180

SARASOTA COUNTY FLORIDA
SCALE: 1" = 200'
MAY 1966

S 1/2 SECTION 10
TWP. 39 S. RNG. 19 E.



SHT. NO.
414