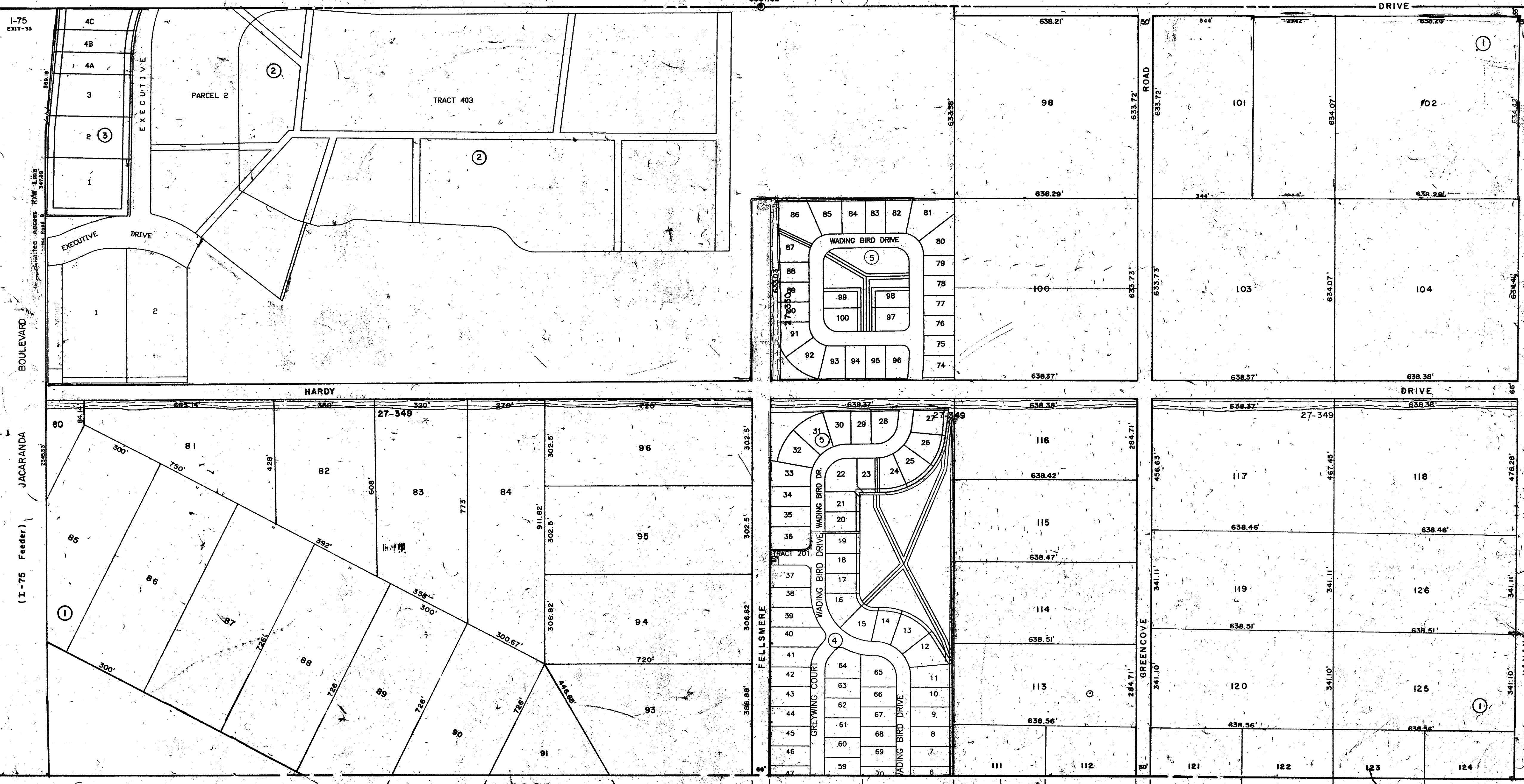


SEC. COR. 816

S 1/2 2-39-19 SHT. NO. 398  
5337.62'

SEC. COR. 933

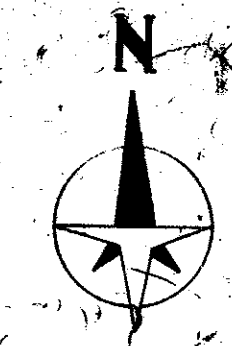
N 1/2 10-39-19 SHT. NO. 413



SEC. COR. 817

S 1/2 11-39-19 SHT. NO. 416

N 1/2 12-39-19 SHT. NO. 417



**SUBDIVISION INDEX**

- | No. | Name  |
|-----|---|
| 1   | VENICE FARMS 2/179                                  |
| 2   | SARASOTA COUNTY INTERSTATE BUSINESS CENTER PB38PG04 |
| 3   | SCIBC/CHI LAND CONDO CB31PG18                       |
| 4   | BLUE HERON POND, UNIT 1 PB43PG3                     |
| 5   | BLUE HERON POND UNIT 2 PB43/16                      |

**LEGEND**

- Section Corner Monument
- Permanent Reference Monument
- Reference Point for Subdivisions
- ① Subdivision Index Number
- Drainage

ALTERATIONS	
DATE	DESCRIPTION
AUG 1980	SPLITS & REVISIONS
MAY 1986	REVISION
AUG 1975	Split Lot 101, G.R. 1050/1036
MAY 1977	PARCEL 101, G.R. 1050/1036
AUG 1977	Parcels 101, 102, 103, 104, 105, 106, 107, 108, 109, 110, 111, 112, 113, 114, 115, 116, 117, 118, 119, 120, 121, 122, 123, 124
MAY 1982	Corrected JACARANDA BLVD. from G.R. 1097/1120
JUL 1983	JACARANDA BLVD. from G.R. 1097/1120
JAN 1983	Amend. D.D. to Limited Access 7-75 2/W
DEC 1987	Added Drive & Numbers
FEB 1988	Added 1-75 Exit

SARASOTA COUNTY FLORIDA  
SCALE: 1"=200'

N 1/2 SECTION 11  
TWP. 39 S. RNG. 19 E.

SHT. NO.  
415