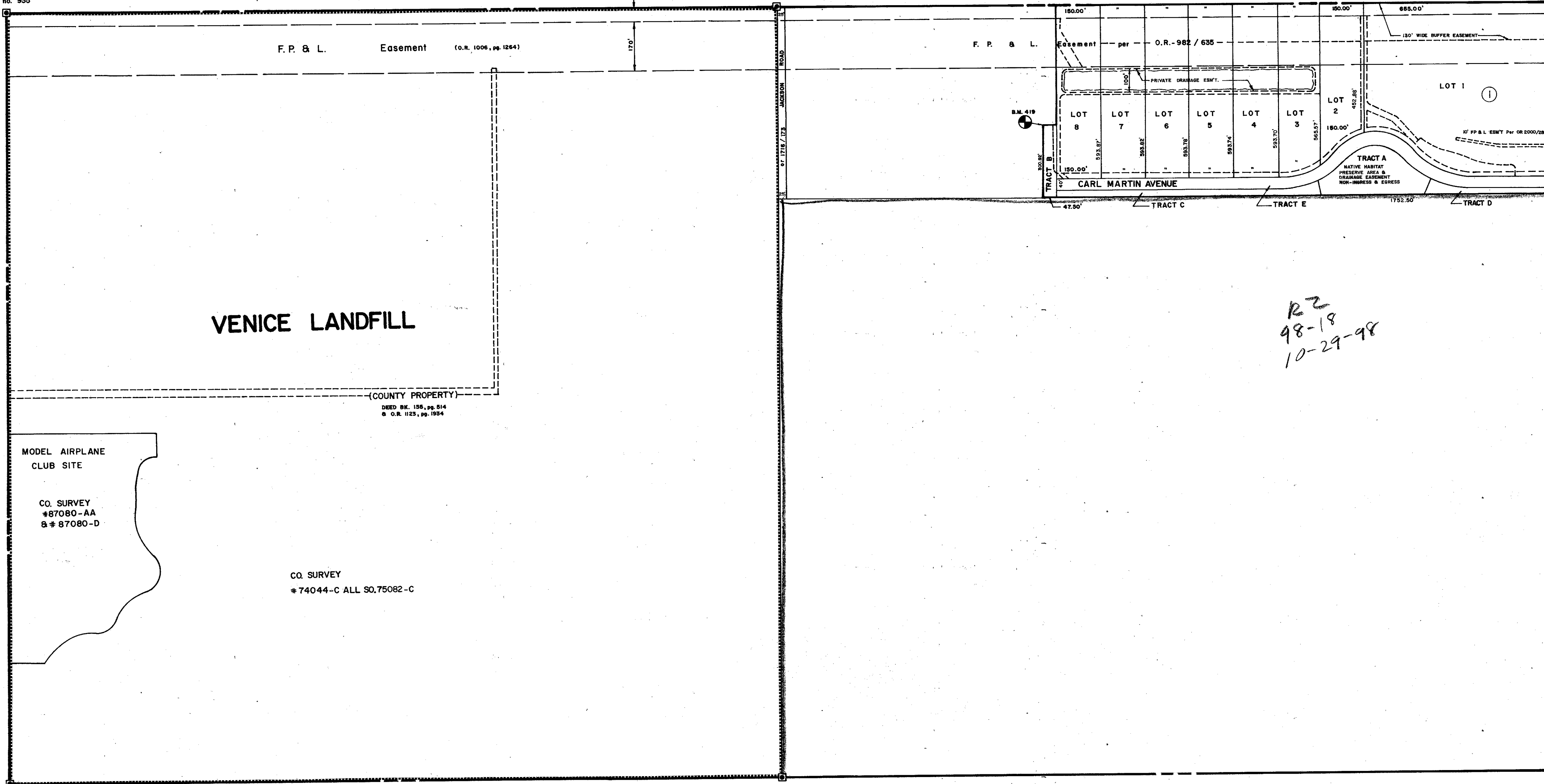


N 1/2 14-39-19, Sht. no. 421

N 1/2 18-39-20, Sht. no. 755

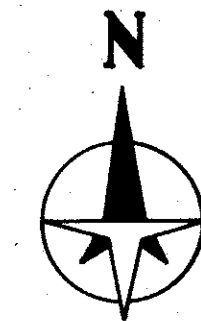


Sec. Cor. 936

Sec. Cor. 993

Sec. Cor. 1056

SUBDIVISION INDEX
I. RIVER ROAD INDUSTRIAL PARK PB. 33/38



- LEGEND:
- ☐ County Section Corner Monument
 - ⊠ County Bench Mark
 - Permanent Ref. Mon. for Subs.
 - ① Subdivision Index Number

REVISIONS	
DATE	DESCRIPTION

SARASOTA COUNTY, FLORIDA
 Scale: 1" = 200' Date: July 19, 1979
 Drawn By: B.Y.

**N 1/2 SECTION 13
 TWP. 39 S., RGE. 19 E.**

Sheet No. **419**