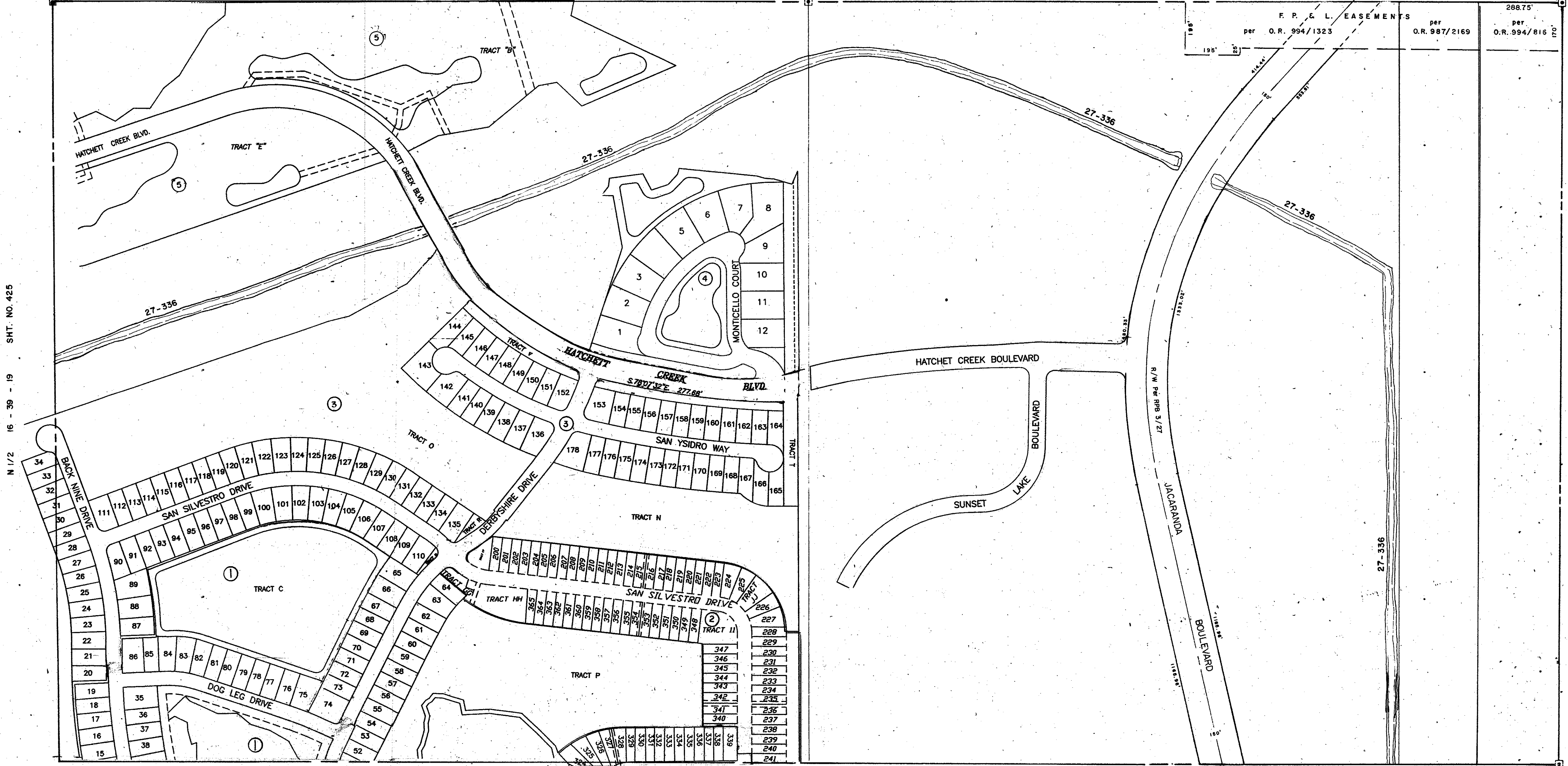


SEC. COR. 709

SEC. COR. 763

SEC. COR. 818

F. P. & L. EASEMENTS	
per O.R. 994/1323	per O.R. 987/2169
288.75'	288.75'
196'	170'



N 1/2 16 - 39 - 19 SHT. NO. 425

N 1/2 14 - 39 - 19 SHT. NO. 421

SEC. COR. 819

- 1. PELICAN POINT & COUNTRY CLUB, UNIT 6 PB40PG18
- 2. PELICAN POINT GOLF AND COUNTRY CLUB UNIT 7B PB41PG36
- 3. PELICAN POINT GOLF & COUNTRY CLUB, UNIT 7 PB40PG36
- 4. PELICAN POINT UNIT 11 PB43PG14
- 5. PELICAN POINT GOLF AND COUNTRY CLUB, UNIT 9 PB43PG9

- LEGEND**
- PERM. REF. MON. (for Subs.)
  - CONC. MON.
  - IRON PIPE
  - CO. SEC. COR. MON.

DATE	DESCRIPTION
SEPT. 1965	REVISIONS AND ADDITIONS
MAY 1966	REVISIONS AND SEC. COR. ADDED
DEC 1961	F. P. & L. EASEMENTS, OR 987/2169, OR 994/1323
JUN 1962	ADDED SECTION CORNERS
SEP 1962	EVERLADES RD. - JACARANDA BLVD. CONNECTOR per OR 1633/760
JUL 1963	JACARANDA BLVD. CORN. C.S. 109/110
DEC 1967	ADDED DRAINAGE DITCH & NUMBERS
SEP 1976	ADDED JACARANDA BLVD. R/W R/R 3,277

SARASOTA COUNTY FLORIDA  
SCALE: 1" = 200'  
MAY 1966

N 1/2 SECTION 15  
TWP. 39 S. RNG. 19 E.

SHT. NO.  
**423**

