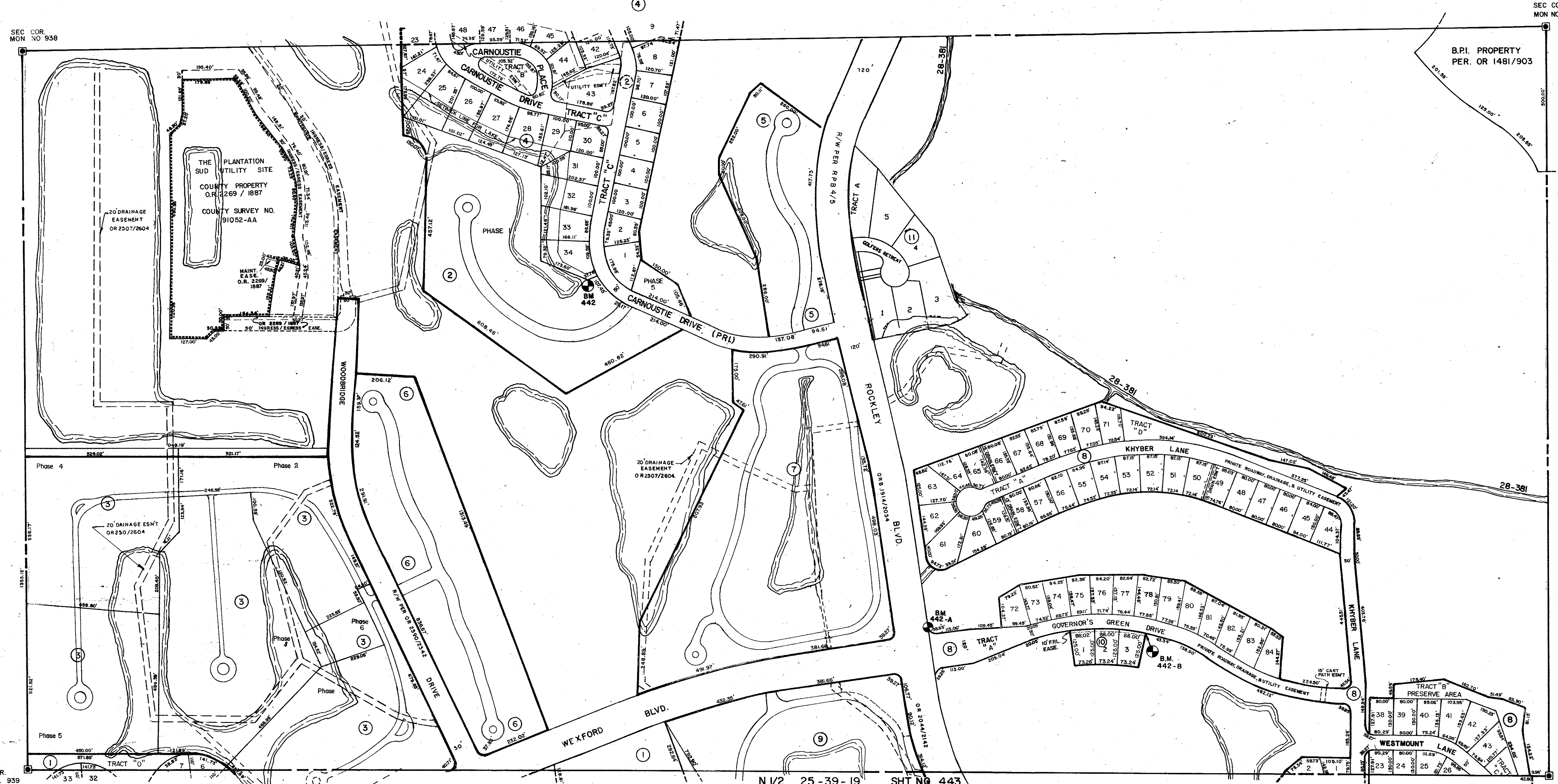


S 1/2 23 - 39 - 19 SHT. NO. 440

S 1/2 19 - 39 - 20 SHT. NO. 758



**SUBDIVISION INDEX**

- 1. THE PLANTATION, UNIT ONE P.B. 28/4
- 2. SAINT GEORGE at the PLANTATION, C.B. 25/43
- 3. HARRINGTON LAKE at the PLANTATION C.B. 26/16
- 4. PLANTATION WOODS P.B. 31/48
- 5. HAMILTON GLEN at the PLANTATION C.B. 27/49
- 6. THE VILLAS of SOMERSET at the PLANTATION C.B. 28/37
- 7. LYNWOOD GLEN at the PLANTATION C.B. 29/9-9E
- 8. GOVERNOR'S GREEN P.B. 35/13-13H
- 9. CLUBSIDE at the PLANTATION C.B. 29/24-24I
- 10. GOVERNOR'S GREEN II P.B. 35/31-31A
- 11. THE CITADEL PB37PG24

**LEGEND:**

- ☐ County Section Corner Monument
- ⊕ County Bench Mark
- ⊙ Permanent Ref. Mon. for Subs.
- ① Subdivision Index Number

REVISIONS	
DATE	DESCRIPTION
MAR. 1994	ADDED ROCKLEY BLVD. RPB 4/5
MAR. 1994	ADDED R/W OR 2500/2342
APR. 1992	ADDED C.B. 25/43/1887
JULY 1991	ADDED GOVERNOR'S GREEN II
JULY 1991	REDRAWN 1/2 SEC., ADDED GOVERNOR'S GREEN, & CLUBSIDE AT THE PLANTATION

**SARASOTA COUNTY, FLORIDA**

Scale: 1" = 200' Date: JULY 3, 1991

Drawn By: B.Y.

**S 1/2 SECTION 24  
TWP. 39 S. RNG. 19 E.**

Sheet No.  
**442**

