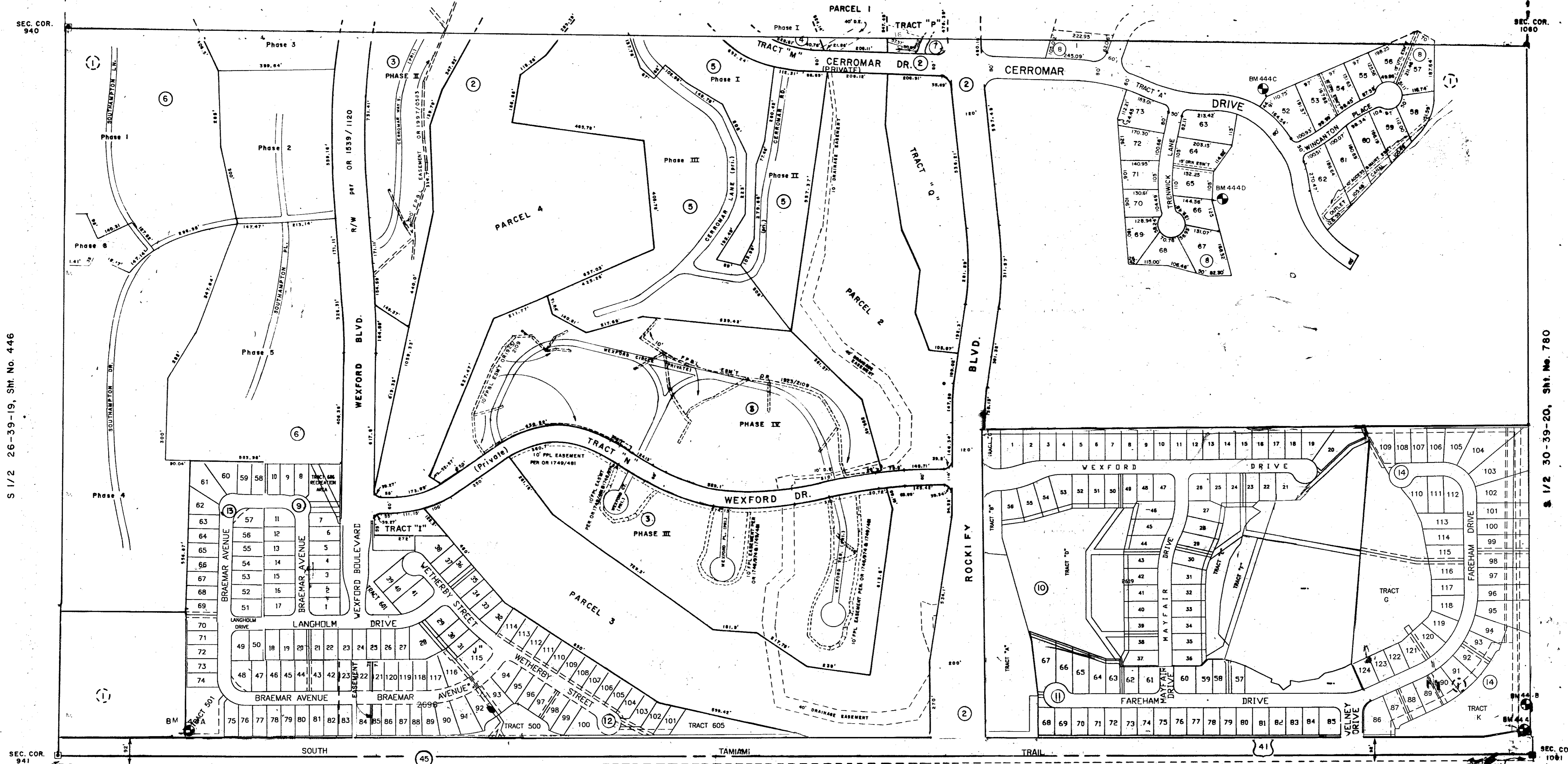


SEC. COR. 940

SEC. COR. 1080

S 1/2 26-39-19, Sht. No. 446

S 1/2 30-39-20, Sht. No. 780



SUBDIVISION INDEX

1. MIAMI FARMS (Vacated) P.B. 4/92
2. THE PLANTATION, UNIT ONE P.B. 28/4
3. AUGUSTA VILLAS AT THE PLANTATION; C.B. 17/25, 18/6, 19/2
4. WESTCHESTER GARDENS AT THE PLANTATION; C.B. 17/45
5. FARMINGTON VISTAS AT THE PLANTATION; C.B. 18/28, 19/28, 23/17
6. MYRTLE TRACE AT THE PLANTATION; C.B. 21/46
7. THE HEATHERS II AT THE PLANTATION C.B. 27/41
8. THE RESERVE PB 33/26-26G
9. WEXFORD ON THE GREEN PHASE ONE PB 38/6
10. FAIRWAY VILLAGE PHASE I PB 38/1
11. FAIRWAY VILLAGE PHASE 2 PB 38/12
12. WEXFORD ON THE GREEN PB 39/28
13. FAIRWAY VILLAGE PHASE 3 PB 39/45
14. FAIRWAY VILLAGE PHASE 3 PB 39/47

LEGEND

- Section Corner Monument
- Permanent Reference Monument
- Reference Monument for Subs.
- ① Subdivision Index Number
- Drainage
- ▬ County Property

DATE	DESCRIPTION	BY
JAN 1932	REVISED OR 437/1937	BY
AUG 1930	REVISED R/W PER OR 1437/1937	BY
OCT 1939	THE RESERVE PB 33/26	BY
FEB 1938	THE HEATHERS AT THE PLANTATION	BY
FEB 1938	10' PPL EASEMENT OR 1927/0383	BY
MAY 1937	10' PPL EASEMENT OR 1925/2109	BY
APR 1937	10' PPL EASEMENT OR 1923/2111	BY
MAR 1937	10' PPL EASEMENT OR 1749/148	BY
OCT 1932	10' PPL EASEMENT PER OR 1749/148	BY
OCT 1932	10' PPL EASEMENT PER OR 1749/148	BY
FEB 1934	MYRTLE TRACE, Condo., Proposed Phases	BY
DEC 1933	Corrected AUGUSTA VILLAS, Condo.	BY

SARASOTA COUNTY, FLORIDA
 Scale: 1" = 200' Date: Oct., 1975
 Drawn By: J.M.M.

**S. 1/2 Section 25
 Twp. 39 S.-Rge. 19 E.**

Sheet No. **444**

