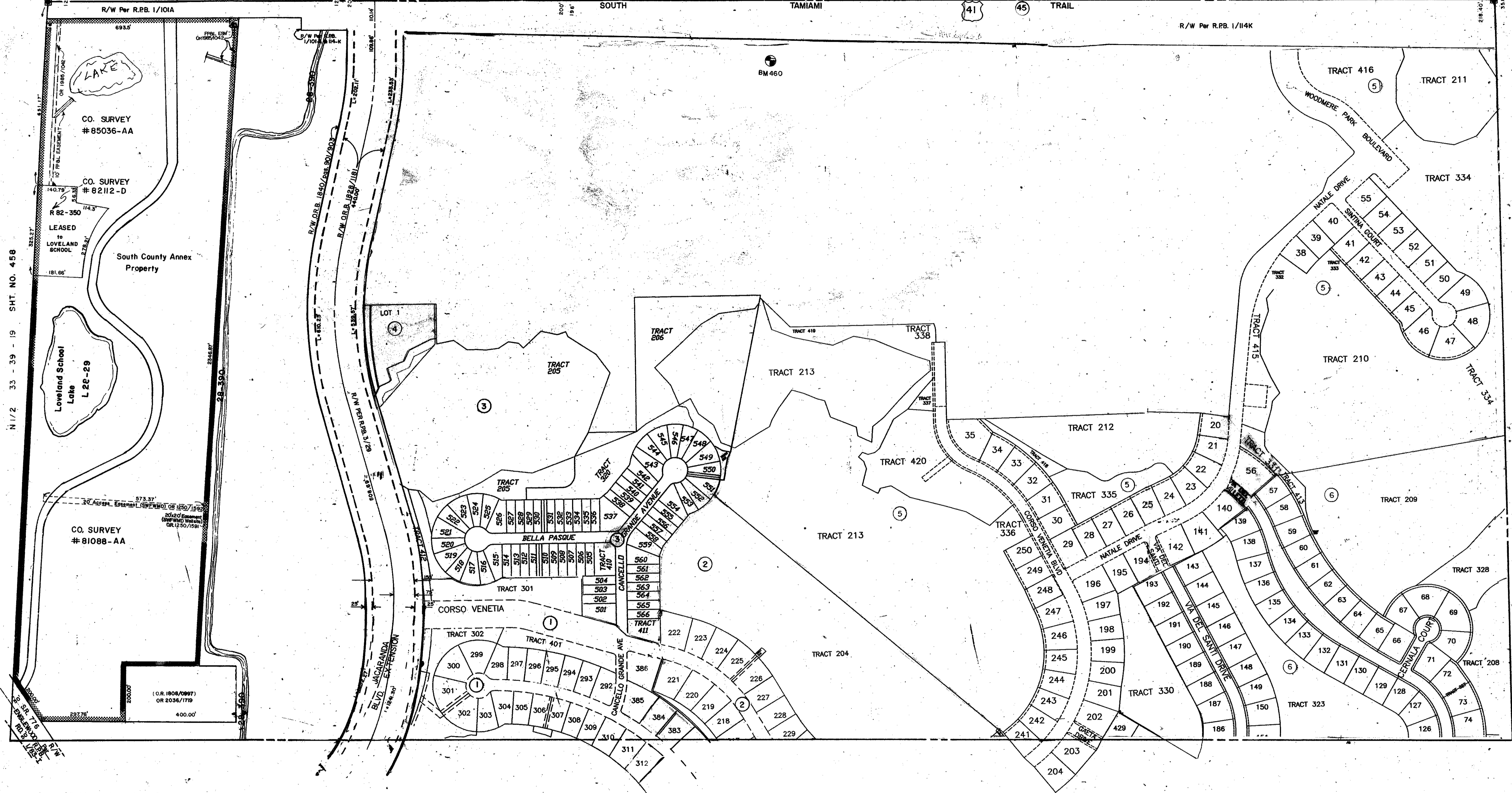


SEC. COR. 715

SEC. COR. 824



N 1/2 33 - 39 - 19 SHT. NO. 458

N 1/2 35 - 39 - 19 SHT. NO. 462

- 1. VENETIA PHASE IA PB40PG01
- 2. PHASE 2 PB/40/46
- 3. PHASE 1 B PB42PG5
- 4. VENETIA REPLAT PARCEL 4 PB42PG50
- 5. VENETIA, PHASE 3 PB43PG12
- 6. VENETIA PHASE 4 PB43PG13

- LEGEND**
- Section Corner Monument
  - Permanent Reference Monument
  - Reference Point for Subdivisions
  - ① Subdivision Index Number
  - ▨ County Property
  - Drainage

DATE	DESCRIPTION	BY
SEP. 1981	ADDED JACARANDA BLVD EXT. R/W R.P.B. 3/29	D.S.M.
JULY 1988	REVISIONS TO 82-114 PER 75-02 LETTER	S.M.
JUN 1988	DEED SA TO FOOT PER OR 2036/1778	R.M.
JAN 1989	ADDED EASEMENT ON 82-114	S.M.
FEB 1989	ADDED EASEMENT ON 82-114	S.M.
DEC 1989	CORRECTED R/W ON US 41 ADJACENT TO JACARANDA BLVD EXT. PER RPB1/00A/814K	J.W.E.
MAR. 1988	CORRECTED R/W ON JACARANDA BLVD EXTENSION PER O.R. 1828/1118	J.W.E.
<b>ALTERATIONS</b>		
SEP. 1983	REVISED	J.W.E.
SEPT 1986	SPLITS ADDED	J.W.E.
JUNE 1988	PROGRAM	J.W.E.
OCT 1978	REV. TAMiami TRAIL R/W LINE	J.W.E.
AUG 1978	ADDED SWFWMD EASEMENTS, OR 1280/1599-1592	J.W.E.
OCT 1987	COUNTY CORNERS - DIM 4	J.W.E.
JAN 1987	COUNTY PROPERTY LEASED TO LOVELAND SCHOOL, R 82-350	J.W.E.
OCT 1988	COUNTY PROPERTY PER O.R. 1804/0927	J.W.E.
JAN 1988	ADDED JACARANDA BLVD EXTENSION PER O.R. 1828/1118	J.W.E.
JAN 1988	CORRECTED SECTION LINE	J.W.E.
JAN 1988	ADDED JACARANDA BLVD EXTENSION PER O.R. 1828/1118	J.W.E.
FEB 1988	CORRECTED SPELLING OF JACARANDA BLVD EXTENSION	J.W.E.

SARASOTA COUNTY FLORIDA  
SCALE: 1" = 200'  
JUNE 1966

N 1/2 SECTION 34  
TWP. 39 S. RNG. 19 E.

SHT. NO.  
460

