

S 1/2 11 - 40 - 19 SHT. NO. 467

SEC. COR. 945

SEC. COR. 1002

SEC. COR. 1065

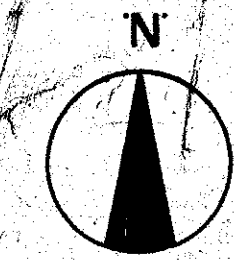
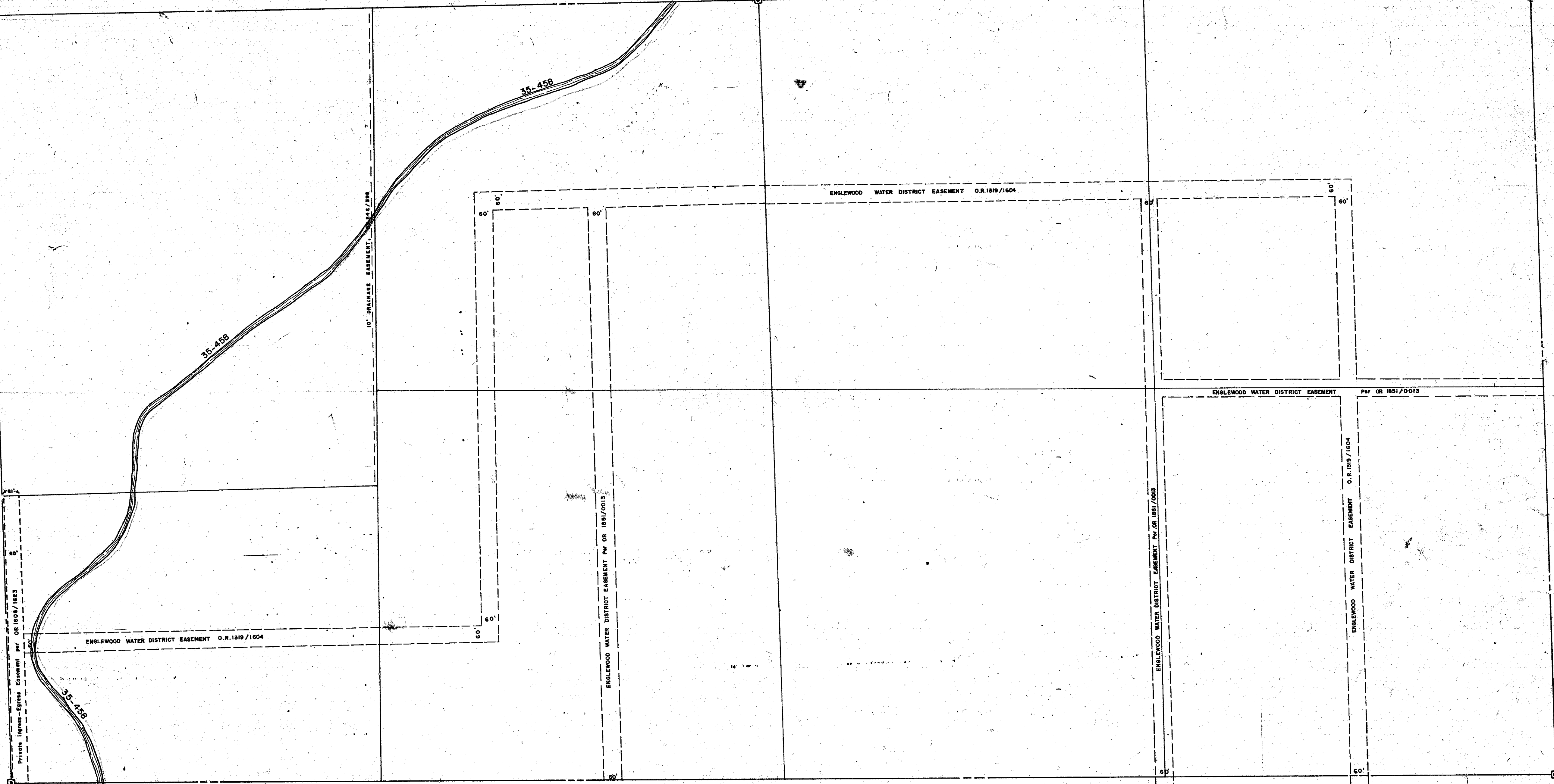
N 1/2 11 - 40 - 19 SHT. NO. 479

N 1/2 7 - 40 - 20 SHT. NO. 805

SEC. COR. 946

SEC. COR. 1066

S 1/2 12 - 40 - 19 SHT. NO. 482



1240
1133
112
114

- LEGEND**
- ⊙ PERM. REF. MON. (for Subs.)
 - CONC. MON.
 - IRON PIPE
 - ⊠ CO. SEC. COR. MON.

ALTERATIONS	
DATE	DESCRIPTION
SEPT 1945	SPLITS ADDED.
OCT 1945	REDRAWN
OCT 1945	SECTION CORNERS - DNR'd
NOV. 1945	Private Easement per OR 1608/1623 (revised)
JAN. 1946	Private Easement per OR 245/2384
JUNE 1945	ENGLEWOOD WATER DISTRICT ESM 7 per O.R. 1319/1604
JULY 1946	ENGLEWOOD WATER DISTRICT ESM 7 per O.R. 1319/1604
FEB 1946	ADDED DRAINAGE DITCH 35-458

SARASOTA COUNTY FLORIDA
SCALE: 1" = 200'
OCT. 1966

N 1/2 SECTION 12
TWP. 40 S. RNG. 19 E.

SHT. NO.
481