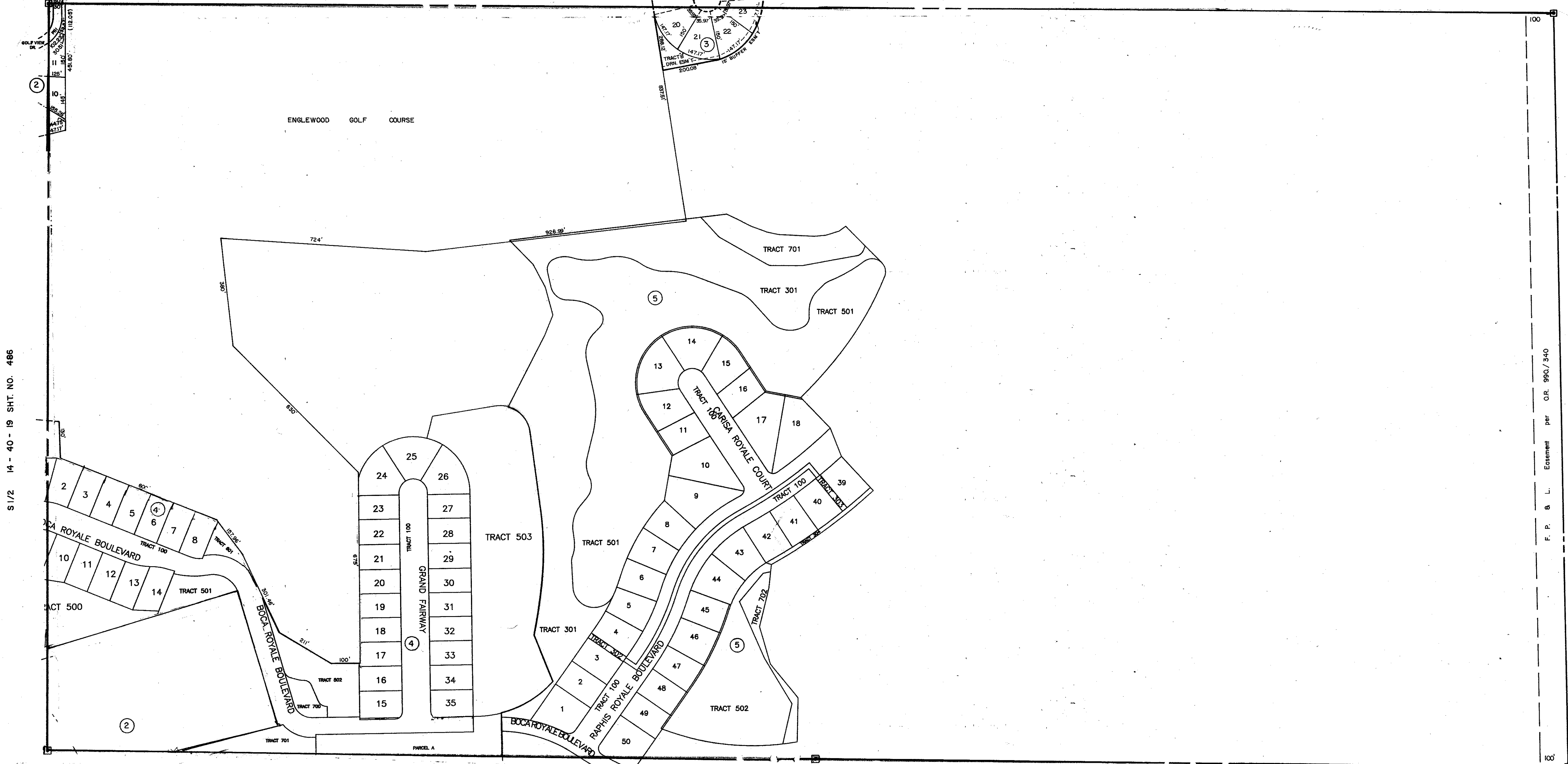


SEC. COR. 948

SEC. COR. 1069



S 1/2 14-40-19 SHT. NO. 486

S 1/2 18-40-20 SHT. NO. 828

SEC. COR. 949

SEC. COR. 1006

SEC. COR. 1071

SUBDIVISION INDEX

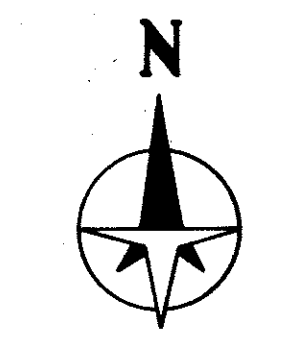
NO.	NAME
1	RANCH ACRES 6/25
2	ENGLEWOOD GOLF COURSE UNIT 1, 22/26
3	ENGLEWOOD GOLF COURSE UNIT 5, 34/3
4	BOCA ROYALE UNIT 7, PB41PG31
5	BOCA ROYALE UNIT PG43PG08

- LEGEND:**
- ▣ County Section Corner Monument
  - ⊕ County Bench Mark
  - Permanent Ref. Mon. for Subs.
  - ① Subdivision Index Number

REVISIONS	
DATE	DESCRIPTION
SEPT. 1985	REVISIONS AND ADDITIONS
OCT. 1985	REVISIONS
MAR. 1974	ENGLEWOOD GOLF COURSE UNIT 1, PB 22/26
MAR. 1974	ENGLEWOOD GOLF COURSE BOUNDARY
DEC. 1981	F.P. & L. EASEMENT PER OR 990/340
OCT. 1982	SECTION CORNERS - UNIT 4
MAR. 1990	ADDED ENGLEWOOD GOLF COURSE UNIT 5, PB 34/3

**SARASOTA COUNTY, FLORIDA**  
 Scale: 1" = 200' Date: JULY 1989  
 Drawn By: KLP

S 1/2 SECTION 13  
 TWP. 40 S. RGE. 19 E.



Sheet No. 484