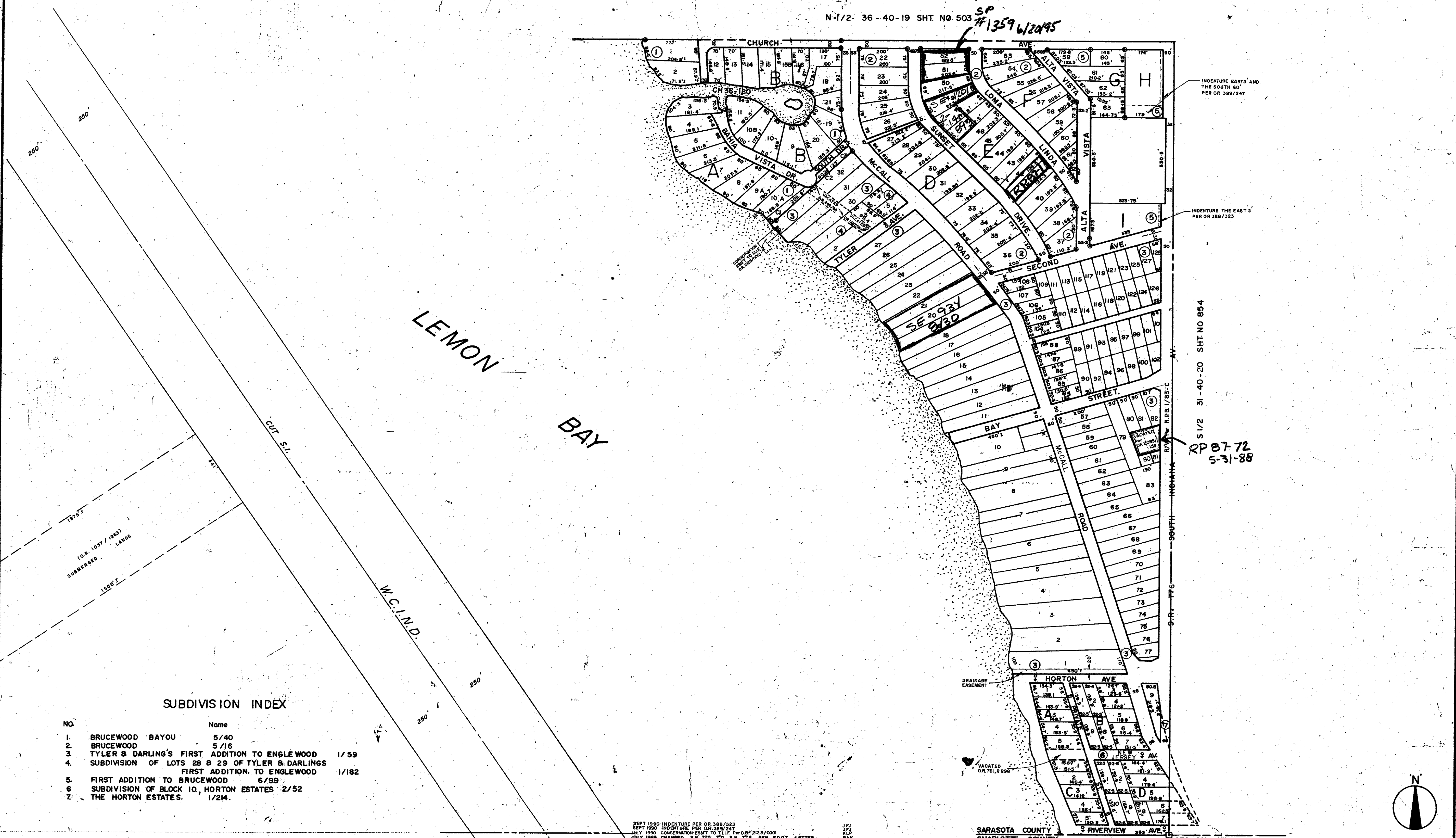


N-1/2-36-40-19 SHT. NO. 503
 SP #1359612095



SUBDIVISION INDEX

NO.	Name	Date
1.	BRUCEWOOD BAYOU	5/40
2.	BRUCEWOOD	5/16
3.	TYLER & DARLING'S FIRST ADDITION TO ENGLEWOOD	1/59
4.	SUBDIVISION OF LOTS 28 & 29 OF TYLER & DARLING'S FIRST ADDITION TO ENGLEWOOD	1/182
5.	FIRST ADDITION TO BRUCEWOOD	6/99
6.	SUBDIVISION OF BLOCK 10, HORTON ESTATES	2/52
7.	THE HORTON ESTATES	1/214

SEPT 1990 INDENTURE PER OR 388/323
 SEPT 1990 INDENTURE PER OR 389/247
 JULY 1990 CONSERVATION EMT TO TILL PER OR 212/000
 JULY 1988 CHANGED S.R. 774 TO S.R. 776 PER F.D.O.T. LETTER

LEGEND

○	PERM. REF. MON. (for Subs)
■	CONC. MON.
●	IRON PIPE
□	CO. SEC. COR. MON.

ALTERATIONS

DATE	DESCRIPTION	BY
MAY 1964	REBRANN	J.P.
MAY 1965	W.C. I.N.D. ADDED	J.P.
MAY 1968	REVISED SHORE-LINE	J.P.
MAY 1975	ADDED Submerged Parcel in Lemon Bay	J.A.R.
Dec. 1975	Vacated Unimproved St. OR 246/60	J.S.D.
FEB 1976	ADDED 20' DRAINAGE EASEMENT R.R.B. 4, R. 879	J.S.D.
MAR. 1978	VACATED PART OF NEW JERSEY AVE., O.R. 761, 886	J.S.D.
MAY 1978	Vacated Unimproved Street (R. 1/182) per OR 1287/816	J.S.D.
NOV. 1982	SECTION CORNER - D.N.R.	J.S.D.
FEB 1985	WOOD DRAINAGE NUMBER	J.S.D.
FEB 1985	VACATED PORTION OF LOTS 80, 81, & 82 PER 1/259 p. 2095/159	J.S.D.

SARASOTA COUNTY, FLORIDA.
 SCALE: 1" = 200'
 MAY 1964

S 1/2 SECTION 36
 TWP. 40 S. RNG. 19 E

SHT. NO.
 504

INDENTURE EASTS AND THE SOUTH 60' PER OR 389/247
 INDENTURE THE EASTS PER OR 388/323
 S 1/2 36-40-20 SHT. NO. 854
 RP 07-72 5-31-88