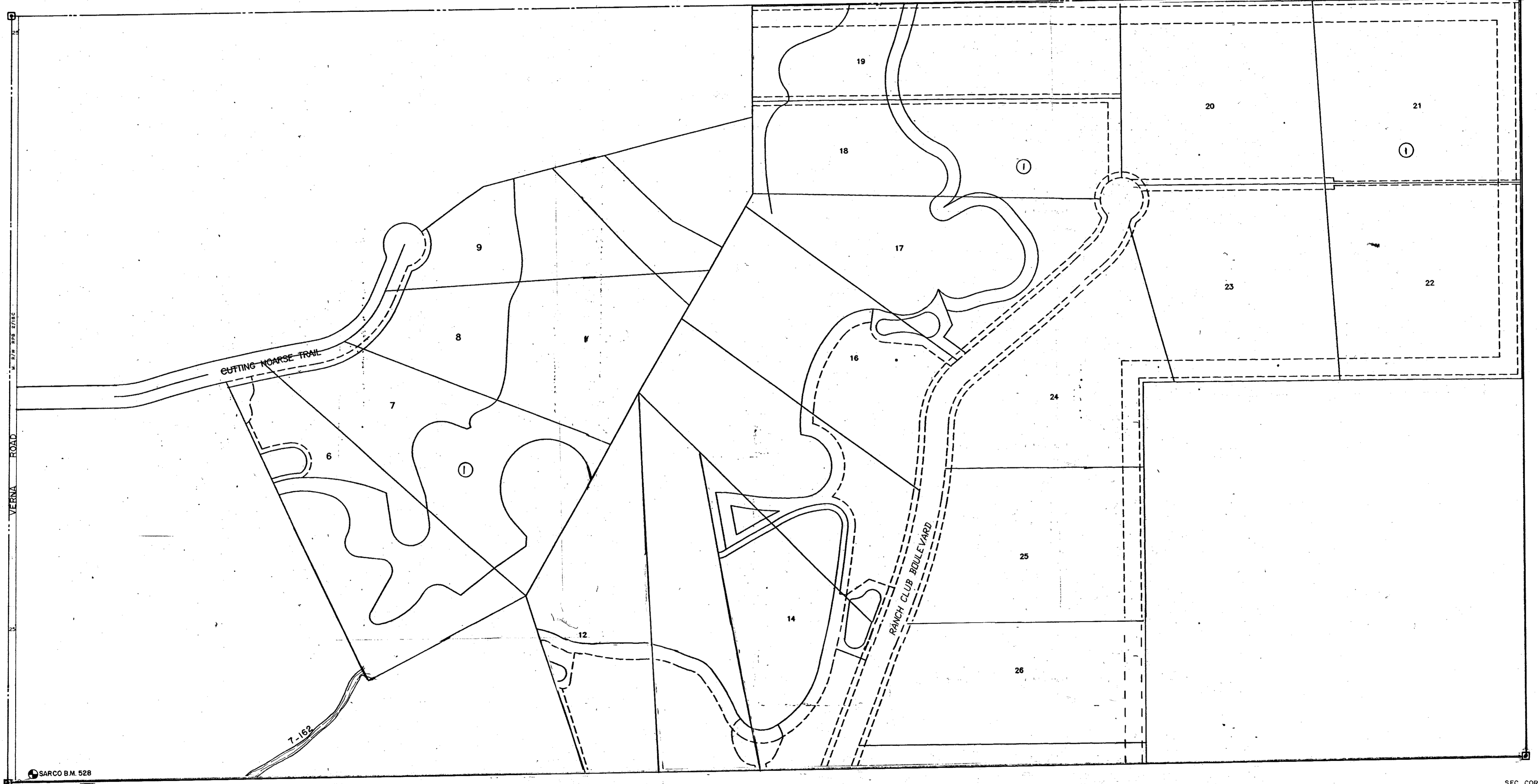


N 1/2 12-36-20 SHT. NO. 527

SEC. COR. NO. 1749

SEC. COR. 1625

S 1/2 11-36-20 SHT. NO. 526



MANATEE COUNTY

SARCO B.M. 528

SEC. COR. 1626

INDEX

I. SARASOTA RANCH CLUB PB 4116

SEC. COR. NO. 1751

N 1/2 13-36-20 SHT. NO. 529

- LEGEND**
- PERM. REF. MON. (for Subs)
  - CONC. MON.
  - IRON PIPE
  - CO. SEC. COR. MON.

ALTERATIONS	
DATE	DESCRIPTIONS
NOV. 1982	SECTION CORNER - DNR'S
OCT. 1983	SARASOTA RANCHES
DEC. 1985	ADDED SARCO BENCH MARK 528 & SEC. COR. 1626
SEPT. 1987	ADDED CANAL NUMBERS
FEB. 1992	REMOVED PROPOSED R.C. SUB., SARASOTA RANCHES

SARASOTA COUNTY FLORIDA  
SCALE 1" = 200'  
OCT. 1963

S 1/2 SECTION 12  
TWP. 36 S. RNG. 20E

SHT. NO.  
**528**