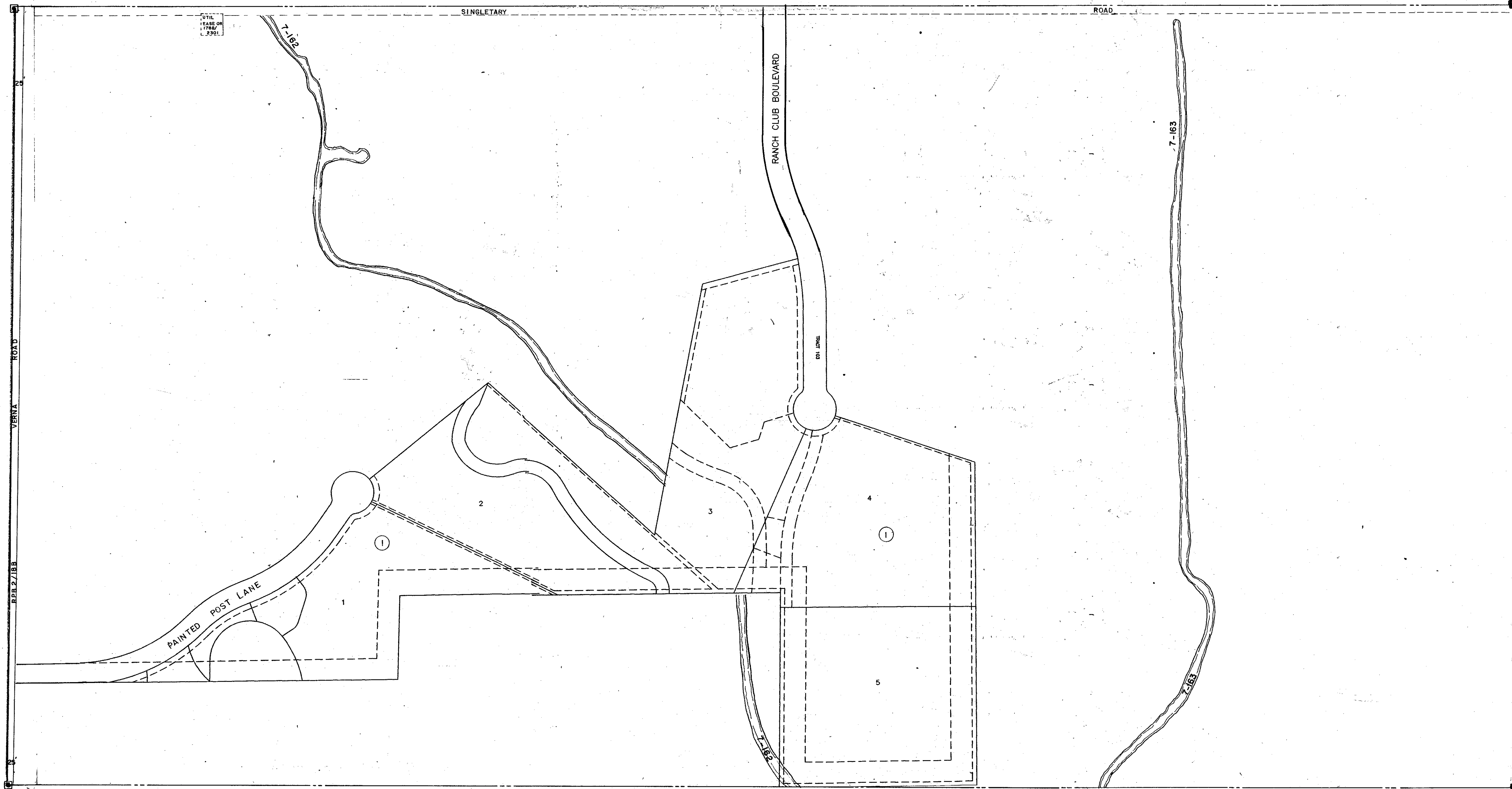


N1/2 13 - 36 - 20 SHT. NO 529

SEC. COR. 1627

SEC. COR. 1753



S1/2 14 - 36 - 20 SHT. NO 532

MANATEE COUNTY

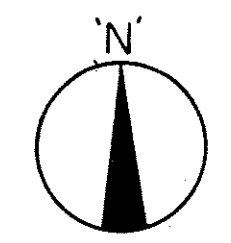
SEC. COR. 1628

INDEX

J. SARASOTA RANCH CLUB PB41PG16

SEC. COR. 1754

N1/2 24 - 36 - 20 SHT. NO 551



- LEGEND**
- PERM REF MON (for Subs)
 - CONC. MON.
 - IRON PIPE
 - CO. SEC. COR. MON.

ALTERATIONS	
DATE	DESCRIPTION
NOV 1982	SECTION CORNERS - DNR'S
NOV 1983	SARASOTA RANCHES
OCT 1985	ADDED UTILITY EASEMENT OR 1788/2301
JAN 1987	ADDED SINGLETARY ROAD
SEP 1987	ADDED CAMEL HARBOR
FEB 1992	REMOVED PROPOSED N.C. SUB, SARASOTA RANCHES

SARASOTA COUNTY FLORIDA
SCALE 1" = 200' OCT. 1963

S 1/2 SECTION 13
TWP. 36 S. RNG. 20 E.

SHT. NO.
530