

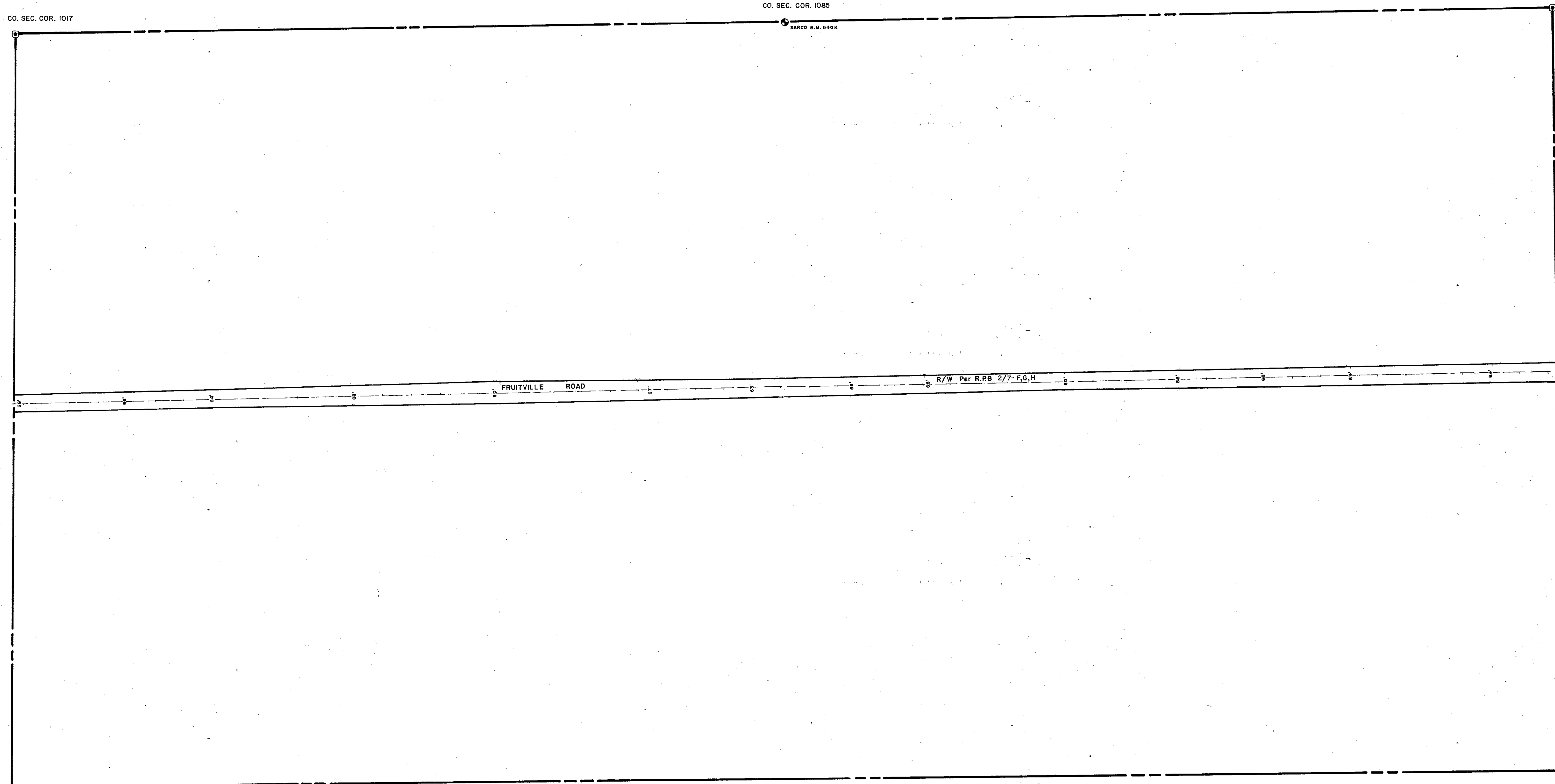
CO. SEC. COR. 1017

CO. SEC. COR. 1085

SARCO B.M. 840K

N 1/2 24-36-19 SHT. NO. 225

N 1/2 20-36-20 SHT. NO. 543



SUBDIVISION INDEX

NO. NAME

S1/2 19-36-20 SHT. NO. 542



- LEGEND:**
- ▣ County Section Corner Monument
  - ⊕ County Bench Mark
  - Permanent Ref. Mon. for Subs.
  - ① Subdivision Index Number

REVISIONS	
DATE	DESCRIPTION
JULY 1990	ADDED FRUITVILLE RD. R/W. SDS

**SARASOTA COUNTY, FLORIDA**

Scale: 1" = 200' Date: JULY 1990  
 Drawn By: SDS

N. 1/2 SECTION 19  
 TWP. 36 S. RGE. 20 E.

Sheet No.  
 541